



Solar energy support welded pipe





Solar energy support welded pipe

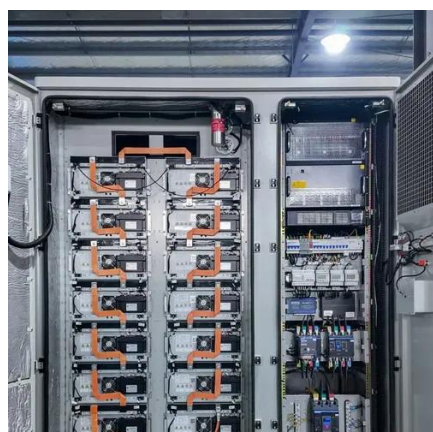


[How is the quality of solar welded pipes? , NenPower](#)

Innovations in manufacturing processes further enhance the quality and durability of these pipes, catering to their specific applications in renewable energy systems. By maintaining high ...

[CS Pipe In Solar Energy: Supporting Sustainable Solutions](#)

CS pipe's ability to efficiently conduct heat allows for optimal energy transfer, maximizing the overall efficiency of the system. In addition to its durability and thermal conductivity, CS pipe also ...



Steel and energy: the manufacture of solar supports and wind ...

In the realm of solar energy, steel's contributions are equally significant. ERW pipes (Electric Resistance Welded pipes) have become the industry standard for the construction of ...

[Can stainless steel pipes be used in solar energy systems?](#)

In solar energy systems, welded stainless steel pipes are commonly used for applications where the pressure and temperature requirements are not as high. They are also suitable for ...



[Solar Power & Steel Pipes: A Comprehensive Guide , EOXS](#)

How the Solar Power Industry Uses Steel Pipes
Steel pipes are essential to the solar energy sector. They are employed in the production of the panels' support structures as well as the ...



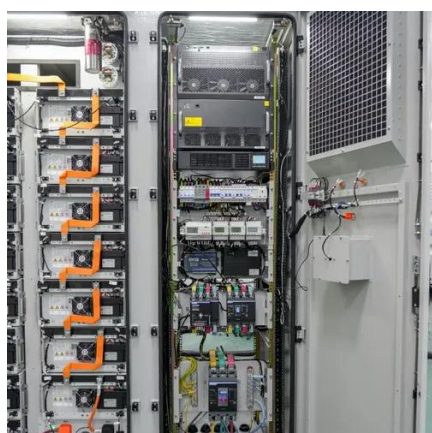
Galvanized ERW Steel Tubing Square Rectangular Steel Pipe for Solar

Galvanized ERW (Electric Resistance Welded) steel square pipes are widely used in solar racking systems due to their superior strength, corrosion resistance, and cost-effectiveness. These pipes ...



[Solar Power & Steel Pipes: What You Need to Know](#)

Steel pipes are vital for the solar power industry. They are used to transport different components of the panels and are also used in the manufacturing of the panel's support structures.



Welded Steel Pipe Application



Expands to Renewable Energy ...

Renewable energy sources, including wind, solar, hydroelectric, geothermal, and biomass, have become important alternatives to traditional fossil fuel power generation. As the demand for renewable energy ...

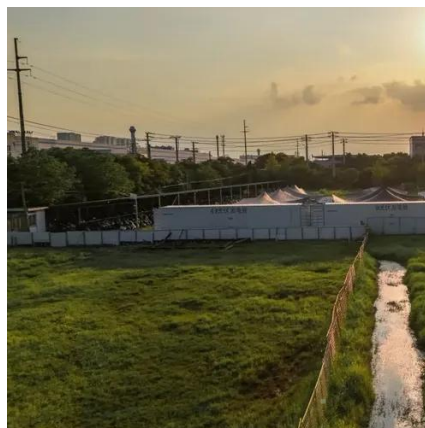


Energy Transportation

Solar power plant construction: In large solar power plants, steel pipe is an important part of the support structure, through the support structure of the solar panels arranged into a whole, so ...

[Solar support welded pipe model specifications](#)

What makes ArcelorMittal support structures more sustainable? n of sunlight using photovoltaic (PV) and solar thermal technologies. Using steel to build the support structures makes it even more ...





Contact Us

For catalog requests, pricing, or partnerships, please visit:

<https://id2market.eu>

Phone: +34 910 56 87 45

Email: info@id2market.eu

Scan the QR code to access our WhatsApp.

