



Solar inverter does not light up at night





Overview

The short answer is no—solar inverters do not produce or convert energy at night because they rely on sunlight to generate electricity. One reason stood out, shedding light on why your solar lights are failing to illuminate the night. Regularly maintain and check battery condition. Cleaning the panel with a soft cloth can greatly enhance its efficiency.



Solar inverter does not light up at night



[Does Solar Inverter Work at Night? Unveiling the Facts and](#)

No, a solar inverter does not work at night. This is because solar inverters require sunlight to produce energy, so when the sun goes down, they stop producing electricity.

Solar Energy - SEIA

Solar power is energy from the sun that is converted into thermal or electrical energy. Solar energy is the cleanest and most abundant renewable energy source available, and the U.S. has some of the ...



Solar power , Definition, Electricity, Renewable Energy, Pros and ...

Virtually nonpolluting and abundantly available, solar power stands in stark contrast to the combustion of fossil fuel and has become increasingly attractive to individuals, businesses, and ...



[Does a Solar Inverter Work at Night? Here's the Real Answer](#)

The short answer is no--solar inverters do not produce or convert energy at night because they rely on sunlight to generate electricity. Solar inverters are designed to convert the DC electricity from solar ...



[SunPower - Powering a Brighter Future , SunPower®](#)

We provide residential solar, battery storage, and custom solutions for homes, built to last with quality and backed by decades of solar expertise.



Solar & Battery Solutions , Generac

Generac Solar & Battery Solutions provide a more powerful, resilient and smart way to manage your energy needs.



Solar Energy

There are two main types of solar energy technologies--photovoltaics (PV) and concentrating solar-thermal power (CSP). On this page you'll find resources to learn what solar ...



Why Your Inverter Shuts Down at



Night (And How to Fix It Safely)

Although it feels inconvenient, an inverter shutting down at night is usually a sign that the protection system is working correctly. Allowing a battery to discharge too deeply may keep the lights on for ...

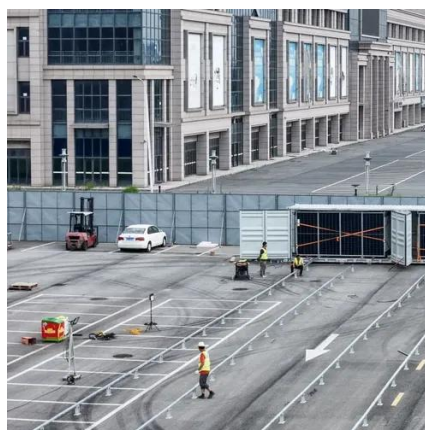


SolarEdge Night Mode , What To Do When Stuck , Skyline Solar

Night Mode is a feature on SolarEdge inverters that is designed to save energy and increase system safety. In this article, we'll explore how it works, how to troubleshoot it and some of the benefits of using it.

Why Your Photovoltaic Inverter Goes Dark at Night (And When to Worry)

Ever walked past your photovoltaic inverter at night like a concerned parent checking a sleeping child? That blank display can be downright unsettling. Let's cut through the darkness - literally and figuratively - to ...



[SOLAR , Division of Information Technology](#)

Students use SOLAR to register for classes, print schedules, view and pay bills, update personal contact information, view transcripts, and submit student employment timesheets.

Why Are My Solar Lights Not Working



at Night? (9 Causes!) , Discover

When solar lights aren't working at night, the lack of sunlight exposure is often the primary cause. Obstructions such as trees or buildings can block the direct sunlight required for proper charging.



Solar power

Solar power, also known as solar electricity, is the conversion of energy from sunlight into electricity, either directly using photovoltaics (PV) or indirectly using concentrated solar power.



[Troubleshooting Your System , Tesla Support](#)

Note: After dark, your solar inverter automatically switches to Night Mode -- the lights will be off, and the screen will be blank. When the sun rises, your solar inverter will return to normal.



[Solar Panels for Home in 2026 , Solar](#)

Solar panels work through the photovoltaic (PV) effect. When sunlight hits the panels, it creates an electric current that is first used to power electrical systems in your home.

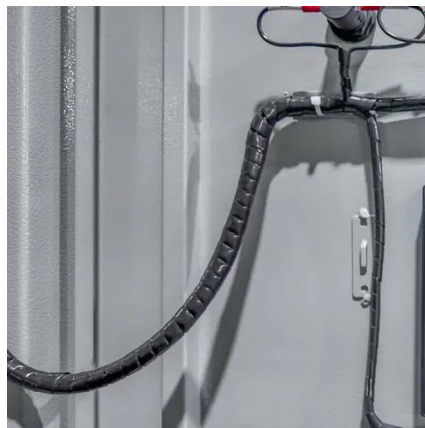


What Happens to Solar Inverters at



Night? Do They Shut Down?

The nocturnal operation of solar inverters is a critical aspect of solar energy systems that requires careful consideration and optimization. While solar inverters do not shut down completely at night, they ...



Residential Clean Energy Credit

If you invest in renewable energy for your home such as solar, wind, geothermal, fuel cells or battery storage technology, you may qualify for an annual residential clean energy tax credit.

[Inverter Display Night Mode During Bright Sunlight](#)

Learn how to troubleshoot and fix inverter display issues in bright sunlight conditions.



[What to do if the solar light does not light up at night](#)

If solar lights do not illuminate at night, several steps can be taken to diagnose and solve the issue. 1. Check the solar panel for dirt or debris, which can o...

To lower electric bills, consumers



quietly install DIY solar

Plug-in solar has remained in the shadows because of a lack of safety standards and often costly requirements imposed by utilities, but that's changing.





Contact Us

For catalog requests, pricing, or partnerships, please visit:

<https://id2market.eu>

Phone: +34 910 56 87 45

Email: info@id2market.eu

Scan the QR code to access our WhatsApp.

