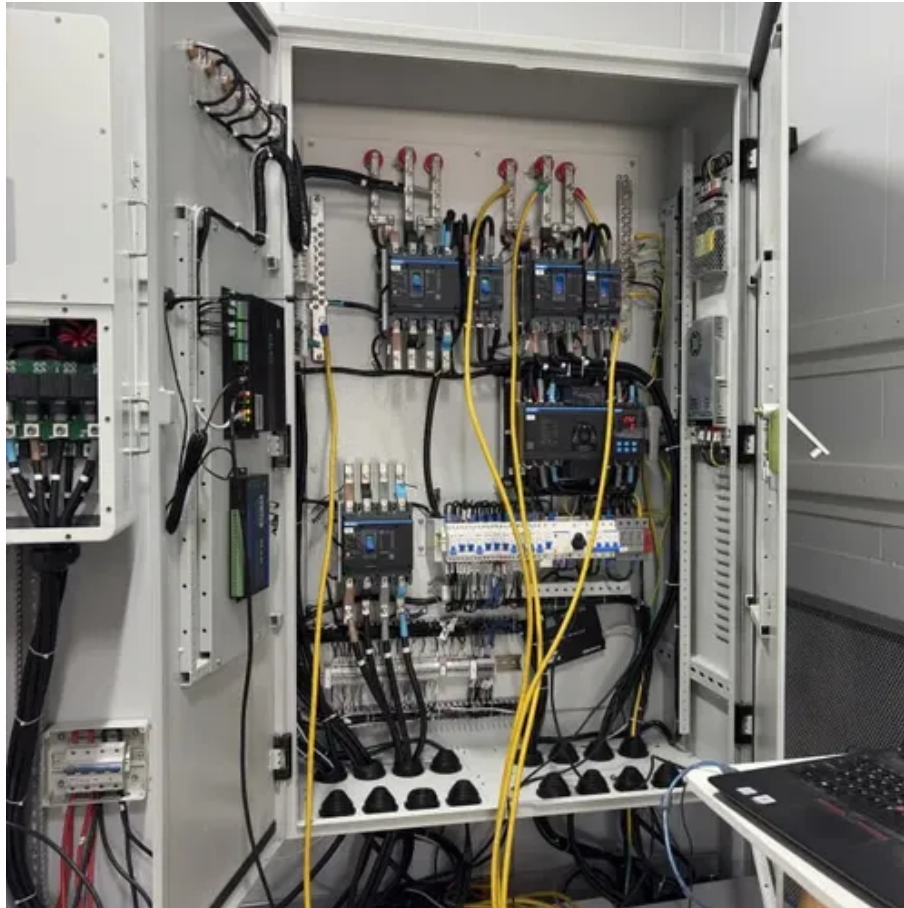




Solar inverter height





Overview

Mounting height is another crucial factor in solar inverter placement. 5 and 2 meters above ground level. This range strikes a balance between visibility, accessibility, and safety:. To minimize damage and maintain optimal inverter performance: It is recommended to keep the inverter shaded and out of direct sunlight to prevent overheating. Overheating causes a reduction in power output, premature wear of electrical components, and faster degradation of mechanical components. I had an inspector site 404. And if it doesn't, wouldn't 705. Hence, it should be installed at a safe location where it may not harm the people passing by it, including a narrow passageway.



Solar inverter height



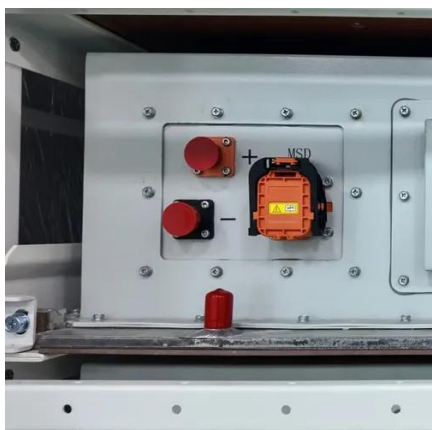
Choose a Location

Choose a vertical wall capable of supporting the full weight of the Solar Inverter. Ensure there is sufficient space to meet the Solar Inverter space requirements.

Best location for inverter , Inside vs outside? Warranty issues?

As per ESV.vic.gov , the minimum height to the bottom of the inverter can't be less than 500mm from the ground, floor or platform & the maximum height to the top of the inverter is 2 meters above

...



Best location for inverter , Inside vs outside? Warranty issues?

With ground mounting, you can place your solar inverter at a lower height, which can be beneficial for easily reaching and maintaining the unit. This

...

[Inverter Placement Tips for Curb Appeal](#)

Discover optimal inverter placement to maintain your home's curb appeal while ensuring efficient solar energy conversion.



Inverter Mounting Height , Information by Electrical Professionals for

I would think you can mount the inverter that high if you have an additional readily accessible DC disconnect. Or probably you can even argue your way out of that if you can draw the ...

Requirements for Mounting the Inverter

For roof mounting, the clearance from the inverter to the bottom side of the PV module must be at least 30 mm (1.2 in). This will prevent the grounding bolt from damaging the PV module.



Optimal Solar Inverter Placement for Efficiency & Longevity

Mounting height is another crucial factor in solar inverter placement. Most experts recommend installing inverters at a height between 0.5 and 2 meters above ground level.

Clearance Guidelines for Mounting Three



Phase Inverters

If a metal back sheet is used under conditions of direct sunlight, it is recommended to leave 30 cm of clearance between the sheet and the inverter. A clearance of under 30 cm may cause the inverter to ...



Where Does a Solar PV Inverter be Installed?

If this kind of scheme is used, it is required to pay attention to the strength of the rack and column, as well as the height of the solar PV inverter over ground, avoiding being submerged in ...

4 Key Strategies for High-Capacity Inverter Placement

Discover essential strategies for optimal high-capacity inverter placement in solar installations. This article presents four pivotal strategies for the placement of high-capacity inverters, ...



Where to put a solar inverter

With ground mounting, you can place your solar inverter at a lower height, which can be beneficial for easily reaching and maintaining the unit. This option allows for enhanced ventilation, as ...



Contact Us

For catalog requests, pricing, or partnerships, please visit:

<https://id2market.eu>

Phone: +34 910 56 87 45

Email: info@id2market.eu

Scan the QR code to access our WhatsApp.

