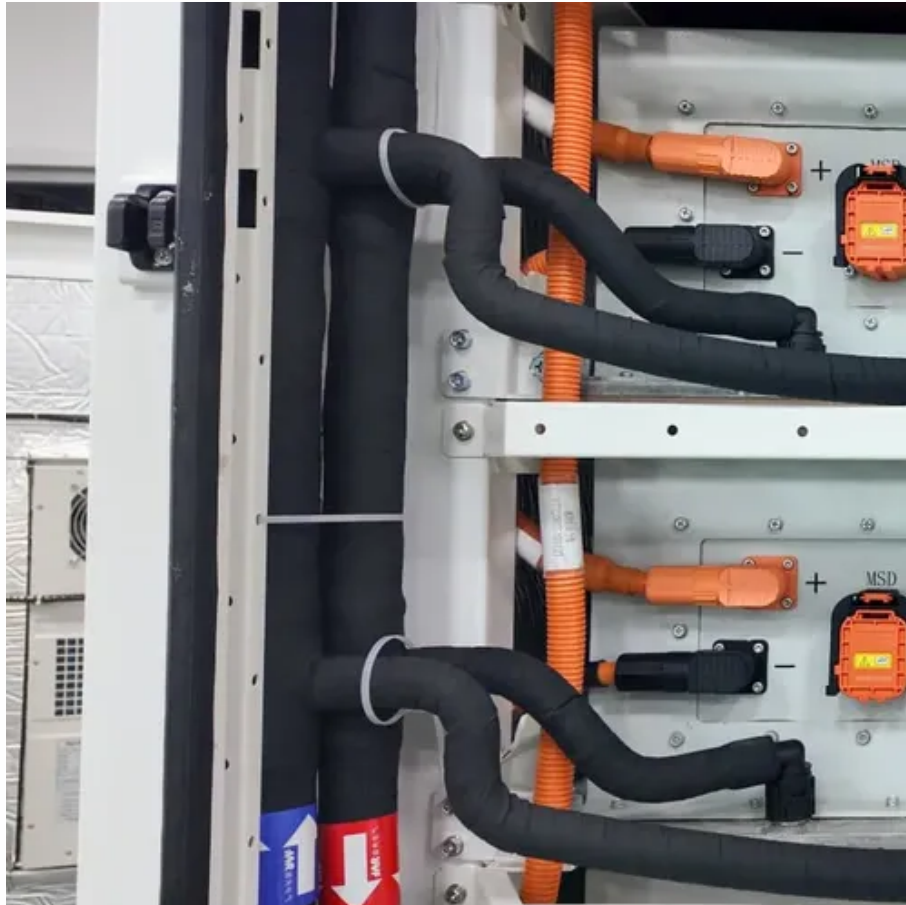




Solar inverter mounting plate





Solar inverter mounting plate



[Solar inverter Mounting Plate , Grid Tie Inverter](#)

Designed to fit over vinyl, aluminum, wood and Concrete siding. ¼ slots to easily accommodate Unistrut hardware and lag screws for mounting into wood studs. Plate is made out of aluminum and the nuts ...



[BP-MMP Magnum Back Plate for Disconnect](#)

The BP-S is a single-piece, powder-coated steel back plate designed to accommodate a single MP or MPX enclosure, a Magnum inverter, and the inverter hood together; making the complete system ...

Magnum BP-S Back Plate

The BP-S is a single-piece powder-coated steel backplate designed to hold a single MP or MPX enclosure, a Magnum inverter, and the inverter hood all in one place, giving the device a more ...



How to Choose the Best Inverter Plate: A Complete Buying Guide

When choosing the best inverter plate for your solar or backup power system, prioritize compatibility with your inverter model, material durability (preferably aluminum or copper), thermal ...



Mounting plate for solar inverters

The mounting plate is ideal for easy mounting and mounting of solar inverters on the wall. Mounting plate with great rigidity.



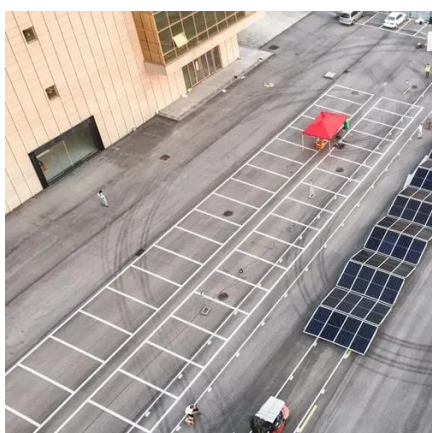
Me need help with simple mounting plate

There's 4 mounting holes in the corners of the inverter that will line up with the pre-drilled holes in the mounting plate. It looks like the inverter is mounted with #8 machine screws, lock ...



Magnum BP-MMP Single Inverter Mounting Back Plate

Designed with PEM (i.e. internally threaded) nuts, the back plate is shipped with ten $\frac{1}{4}$ -20 x $\frac{3}{4}$ " Hex head bolts for mounting the MMP enclosure, a Magnum inverter, and the inverter hood.



FLEXware MP Mounting Plate



The FLEXware 1000 accommodates up to four inverter/chargers and four MPPT charge controllers in an attractive, versatile and code-compliant package for installations where more power is needed.



Magnum Energy BP-S Single Inverter Mounting Back Plate

The BP-S (single plate) is single piece, powder-coated steel back plate designed to accommodate the MP/MPX enclosures, a Magnum inverter, and the inverter hood; thus making the complete system ...



Contact Us

For catalog requests, pricing, or partnerships, please visit:

<https://id2market.eu>

Phone: +34 910 56 87 45

Email: info@id2market.eu

Scan the QR code to access our WhatsApp.

