



Solar panel applies reverse voltage





Solar panel applies reverse voltage



[Battery Backflow: Does It Hurt Solar Panels?](#)

One crucial concern is backflow, also known as reverse current. This article will explain what backflow is, why it's a problem, and how to prevent it, ensuring the longevity and safety of your ...

[Electrical testing standards guide for the PV Industry](#)

The DMM displays the same voltage as before, but there should be a negative sign on the display, indicating reverse polarity. Perform this test to confirm the correct polarity by looking for the negative ...

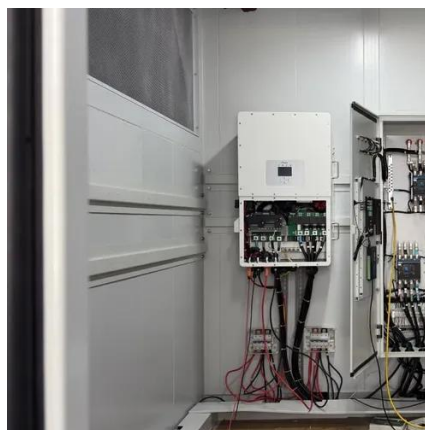


[What happens if solar panel polarity is reversed](#)

When you reverse the polarity of solar panels--connecting the positive terminal to the negative side of the system and vice versa--the consequences range from inefficient operation to catastrophic ...

[solar panel has reversed its polarity! , All About Circuits](#)

On investigation, one of the panels seems to have changed its polarity, and provide a reversed voltage when lit, so counteracting the voltage from the other two panels.



Test standard for reverse current tolerance of solar panels

This sophisticated method applies low current at night to make solar cells "glow." Dark spots indicate microcracks and cell failures that create reverse current paths.



How to reverse solar panel polarity safely for testing

Reversing solar panel polarity isn't something you'll do every day, but it can be a critical step during system troubleshooting, compatibility testing, or when verifying inverter behavior under reversed ...



What would happen if a voltage is applied to a solar panel

A solar panel is simply a light rectifying diode panel. Reverse Voltage across it won't do anything till you exceed the breakdown voltage. They conduct current in the forward direction like a diode would.

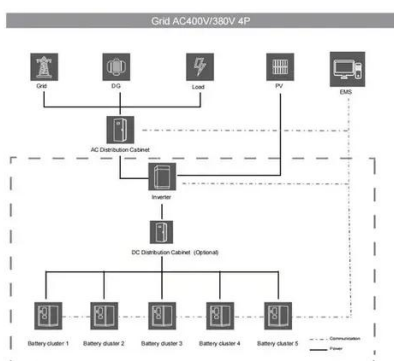
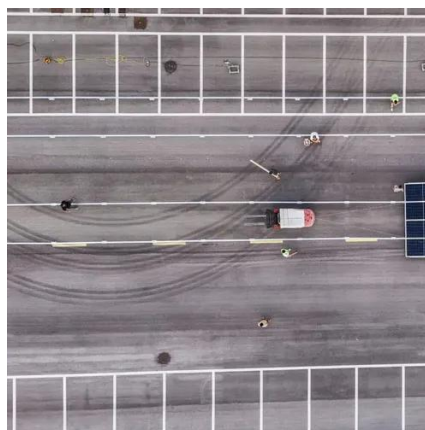


What is the difference between



forward and reverse solar panel polarity

Reverse polarity usually stems from installation errors: swapping wires during connection or misinterpreting terminal labels. But here's where it gets critical: modern solar panels are designed ...



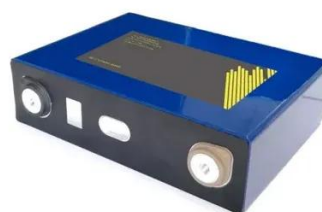
Photovoltaic panel applies reverse voltage

It doesn't allow the current produced by the strong parallel solar panel string to flow in reverse through the shaded or weaker string. Besides that, a blocking diode allows the flow of electrical current to ...

Invenergy , Solar operations and maintenance: Invenergy's approach

...

Solar panels are designed and tested to withstand a certain amount of reverse polarity, and manufacturers even use methods like electroluminescence testing that utilize controlled amounts ...





Contact Us

For catalog requests, pricing, or partnerships, please visit:

<https://id2market.eu>

Phone: +34 910 56 87 45

Email: info@id2market.eu

Scan the QR code to access our WhatsApp.

