



Solar power generation curve





Overview

The duck curve is a graph of power production over the course of a day that shows the timing imbalance between demand and generation. The graph resembles a sitting duck, and thus the term was created. Used in utility-scale, the term was coined in 2012 by the [California Energy Commission](#).



Solar power generation curve

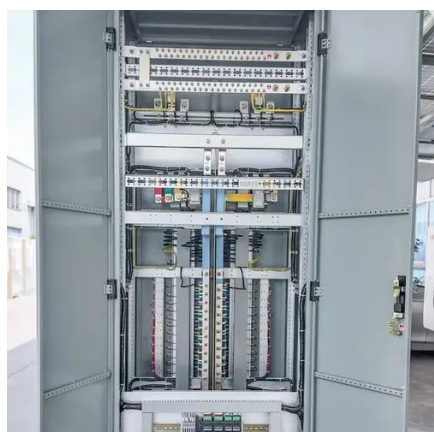


[The Solar Power Duck Curve Explained](#)

Since solar power relies on the Sun, peak solar production occurs around midday, when electricity demand is often on the lower end. As a result, energy production is higher than it needs to ...

Confronting the Duck Curve: How to Address Over-Generation of Solar

Learn about the duck curve and how solar can help balance hourly energy loads. In 2013, the California Independent System Operator published a chart that is now commonplace in ...



11.3: Problems with Solar Power

The upper blue curve is the total demand and the gray curve is the solar power generation. The difference between the two - i.e., all power provided by - is shown by the orange curve (from ...

Solar Resource Data, Tools, and Maps , Geospatial Data Science , NLR

Solar Resource Maps and Data Find and download resource map images and data for North America, the contiguous United States, Canada, Mexico, and Central America. Solar Supply ...



Calculating a Dependable Solar Generation Curve for

SCE had access to meter data for solar generation. Notwithstanding this constraint, this study found that historically at the hour of peak solar irradiance, 95 percent of the solar systems in the PRP region (in ...



As solar capacity grows, duck curves are getting deeper in California

Solar power is only generated during daylight hours, peaking at midday when the sun is strongest and dropping off at sunset. As more solar capacity comes online, conventional power ...



Example of daily load profile for solar PV production ...

Example of daily load profile for solar PV production relative to electricity demand in 2050 - Chart and data by the International Energy Agency.



Typical daily solar generation curve and



load curve.

According to the data of solar radiation and the load supply, the typical daily solar generation curve and load curve are gotten as figure 1. Area 1 represents user's power purchase; area



A Tutorial Review of the Solar Power Curve: Regressions

In this regard, this tutorial review aims to deliver a complete overview of those fundamental scientific and engineering principles pertaining to the solar power curve.

Duck curve

The duck curve is a graph of power production over the course of a day that shows the timing imbalance between peak demand and solar power generation. The graph resembles a sitting duck, and thus the term was created. Used in utility-scale electricity generation, the term was coined in 2012 by the California Independent System Operator.





Contact Us

For catalog requests, pricing, or partnerships, please visit:

<https://id2market.eu>

Phone: +34 910 56 87 45

Email: info@id2market.eu

Scan the QR code to access our WhatsApp.

