



# Solar power generation fault code 120





## Overview

---

Error 120 indicates a fault current sensor failure within the inverter. This fault typically triggers when the inverter detects an anomaly in the current measurements, which could stem from improper readings due to wiring faults or sensor malfunctions. •How can I troubleshoot isolation test failures?

To troubleshoot, check the. Confirm whether the power setting of the inverter Power Control is limited 4. It's external power meter setting. Follow this path to fix it: Advanced Settings > External EPM Set > Fail Safe Set > Change ON to OFF and then press Enter. LimByEPM. 3 Main Causes of Growatt Error 120 Case Study: Solar Farm Voltage Crisis How to Avoid Future Errors Highjoule's Smart Monitoring Systems The Silent System Killer: Understanding Error Code 120 You're checking your solar array's performance when suddenly - bam! - there it is: Growatt inverter error. Some inverter fault codes or solar inverter error codes indicate more serious issues that need professional attention. If you're dealing with recurring faults or don't have support from your original installer, GreenLancer can help. This issue can stem from various causes: Power supply problems: Check if there's a proper connection to the AC grid and that the circuit breakers are in the correct position.



## Solar power generation fault code 120

---



### How to Reset a Solar Inverter Fault: Decoding Inverter Fault Codes

If your system stops producing power and you see an inverter fault message, it can be frustrating and confusing. Many homeowners immediately start searching for how to reset an inverter ...

### Solar Inverter Error Codes Explained (Fronius, Sungrow, GoodWe)

Solar inverter error codes are safety mechanisms, not failures. Every modern inverter constantly monitors: When any value moves outside a safe operating range, the inverter triggers an ...



### Growatt Inverter Problems, Warnings And Error Codes Explained

In this comprehensive guide, we'll delve into common Growatt inverter problems, decode error codes, and provide troubleshooting tips to help you keep your solar system running smoothly.

### [Solis Inverter Alarm Codes \(Complete List\)](#)

In this article, we will provide a comprehensive explanation for all messages generated by Solis inverters, ranging from operating messages to alarm messages. We'll not only decipher what ...

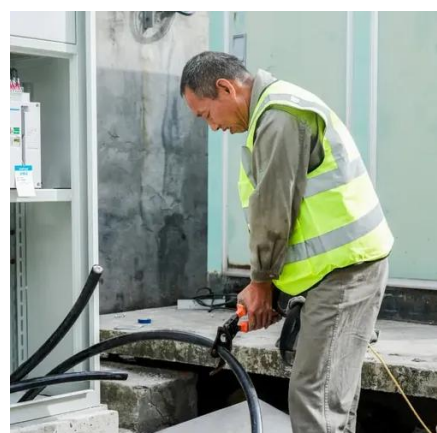


### [Goodwe Error Code 120 - Meaning, Causes & Solution](#)

Learn about Goodwe error code 120, its meaning, causes, and how to fix it effectively.

## **Blueprint: Decoding Inverter Error Codes and When to Escalate**

If your solar panels are generating less power than expected, or your energy storage system is not charging or discharging efficiently, the inverter might be underperforming.



### [Growatt Error Code 120 - Meaning, Causes & Solution](#)

Learn about Growatt Error Code 120, its meaning, causes, and solutions for fault current sensor failure. Error 120 indicates a fault current sensor failure within the inverter.

## [Error Codes and Troubleshooting](#)



## SolarEdge Inverters

The purpose of this addendum is to provide detailed information regarding the error codes and messages displayed when using SolarEdge inverters across various system types, along with ...



## Growatt Inverter Error 120: Causes and Solutions

The Silent System Killer: Understanding Error Code 120 You're checking your solar array's performance when suddenly - bam! - there it is: Growatt inverter error 120. That ominous DC over-voltage warning ...

## SolarEdge Error Codes & Fault Codes: Troubleshooting Guide

In this guide, we'll explain the most common SolarEdge error codes, what a blinking green light really indicates, when to try a reset, and when to contact SolarEdge customer service or a ...





## Contact Us

---

For catalog requests, pricing, or partnerships, please visit:

<https://id2market.eu>

Phone: +34 910 56 87 45

Email: [info@id2market.eu](mailto:info@id2market.eu)

Scan the QR code to access our WhatsApp.

