



# Solar power generation on sloping roofs





## Overview

---

Installing solar panels on a sloped roof enhances energy production efficiency. For example, roofs with a pitch of 30 to 45 degrees often perform well for solar harvesting. Selecting appropriate mounting systems, 3. Rainwater naturally cleans. Many homeowners with sloped roofs face a key question when considering solar power systems: Which mount is right for an inclined roof?

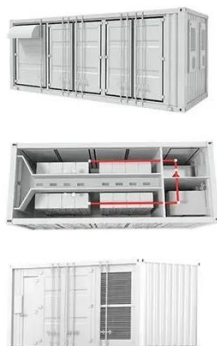
Many homeowners with sloped roofs face a key question when considering solar power systems: Which mount is right for an inclined roof?

This is a critical decision.



## Solar power generation on sloping roofs

---



### [Solar System Installation For Sloped Roofs](#)

Luckily, advancements in technology have made solar installations on sloped roofs both effective and efficient. This guide will explore how you can harness the sun's energy even with an angled rooftop.

### Maximizing Solar Potential: Innovative Solutions for Low Slope Roofs

Low slope roofs, often found on commercial and industrial buildings, present a unique opportunity for solar energy harvesting. This article explores cutting-edge low slope roof solar ...



### [Understanding The Role Of Roof Slope And Orientation ...](#)

When it comes to maximizing the production of solar energy, two key factors ...

### [Solar power generation on sloping roof](#)

The expenses associated with installing solar panels on a sloping roof can reflect various deciding factors, such as panel type, mounting systems, and roof condition.



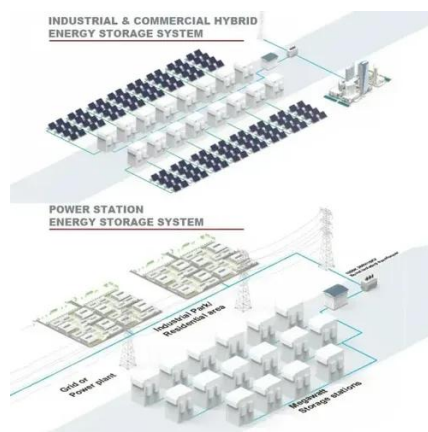
### [How to install solar energy on a sloping roof of a house](#)

Installing solar panels on a sloping roof of a residence requires specific considerations and techniques to ensure optimal performance and structural integrity.



## Understanding The Role Of Roof Slope And Orientation In Maximizing

When it comes to maximizing the production of solar energy, two key factors come into play: roof slope and orientation. Roofs that are optimally sloped and oriented can make a big difference when it ...



### [Homeowner's Guide to Solar , Department of Energy](#)

Typically, solar panels perform best on south-facing roofs with a slope between 15 and 40 degrees, though other roofs may be suitable too. You should also consider the age of your roof and how long ...

### [Can Solar Panels Be Installed on a Sloped](#)



## Roof?

The answer is a definite yes. In fact, sloped roofs are among the most popular and practical locations for solar panel installations because they often provide excellent exposure to ...

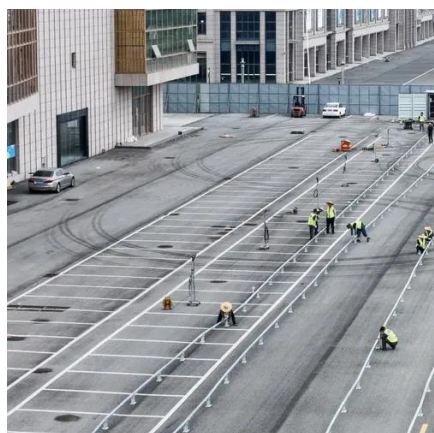


## **How to Install Solar Panels on a Sloped Roof: Step-by-Step Guide for**

Learn how to effectively install solar panels on a sloped roof with our detailed guide. Discover the benefits, step-by-step installation process, safety tips, and maintenance advice to maximize energy ...

## Sloping Roof Solar Solutions: The Smart Homeowner's Guide to

Modern sloping roof photovoltaic panel systems convert awkward angles into energy-generating assets, with properly installed arrays on 30°-40° pitched roofs achieving 18-22% higher efficiency than flat ...



## **My house has a sloped roof. Which solar panel mount is best?**

Many homeowners with sloped roofs face a key question when considering solar power systems: Which mount is right for an inclined roof? This is a critical decision. The right mount ...



## Contact Us

---

For catalog requests, pricing, or partnerships, please visit:

<https://id2market.eu>

Phone: +34 910 56 87 45

Email: [info@id2market.eu](mailto:info@id2market.eu)

Scan the QR code to access our WhatsApp.

