



Solar support equipment parameters





Overview

These parameters include energy output goals, installation angles, equipment configurations, and response to environmental variables such as shading and geographic location. They are crucial for tailoring a solar power system to meet individual needs and efficiency expectations. Select the plus sign in the rows below for more information about each specification. Contact FEMP for. The PV module (s) shall contain Mono crystalline (PERC) silicon solar cells. The PV module have an ability to Works well with high-voltage input Inverters/ charge controllers The PV Panel must have clear anodized aluminum frame with Anti-reflection cover glass. National Renewable Energy Laboratory, Sandia National Laboratory, SunSpec Alliance, and the SunShot National Laboratory Multiyear Partnership (SuNLaMP) PV O&M Best Practices. A solar equipment specification sheet is a technical document that provides detailed information about a solar panel's electrical performance, physical dimensions, operating parameters, and safety certifications. In most cases, this is with roof-mounted ballasted systems, though other.



Solar support equipment parameters

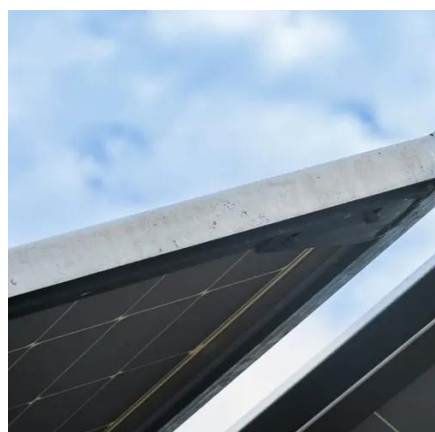


Solar PV Guidline

Provide guidance to designers and installers of our PV projects. It outlines the key attributes of, and expectations for, PV systems on APS projects. It is the District's intent to incorporate solar power ...

[How to set parameters for solar energy . NenPower](#)

These parameters include energy output goals, installation angles, equipment configurations, and response to environmental variables such as shading and geographic location. ...

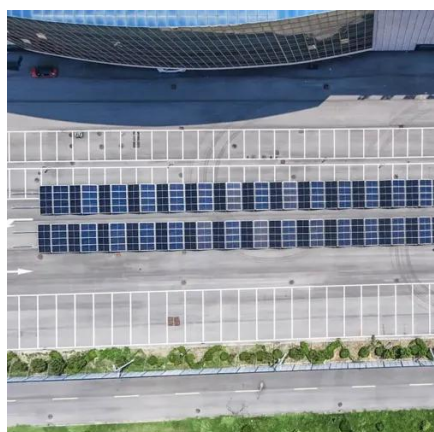


Best Practices for Operation and Maintenance of Photovoltaic ...

In remote locations, stock component replacements onsite, especially for equipment commonly in need of repair, such as driver boards, if the manufacturer support or warranty is not available.

[Solar Photovoltaic: SPECIFICATION, CHECKLIST AND GUIDE](#)

The RERH specifications and checklists take a builder and a project design team through the steps of assessing a home's solar resource potential and defining the minimum structural and system ...

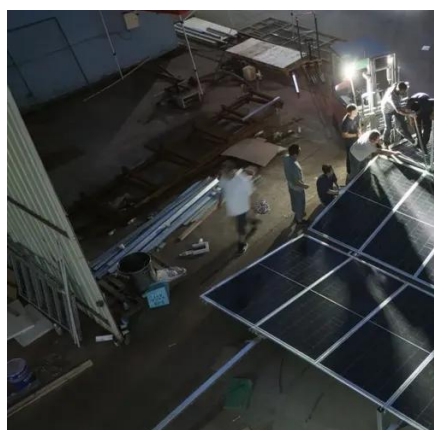


Technical Specifications for On-site Solar Photovoltaic Systems

Browse customizable technical specifications templates from FEMP. Customizable template for federal government agencies seeking the construction of one or more on-site solar PV systems.

Photovoltaic Panel Support Ratio Specifications: Key Factors for Solar

This guide breaks down specifications that determine solar system stability, energy output, and ROI - complete with real-world data and installation best practices.



[Solar support equipment parameter table](#)

Solar support equipment parameter table With these weather parameters, SAM can calculate the incident solar radiation in the Plane of Array (POA), the PV module and inverter efficiency, and the ...

Complete Guide to Solar Panel



Equipment: Components, Selection

Comprehensive guide to solar panel equipment including panels, inverters, mounting systems, and batteries. Learn how to select, size, and install solar components for maximum efficiency.



[Solar Equipment Specification Sheets: Read Like A Pro](#)

Learn how to read solar equipment specification sheets like a pro. Master key metrics including Pmax, voltage, efficiency, and temperature coefficients.

[The Equipment You Need For A Solar Panel System](#)

To go solar, you'll need solar panels, inverters, racking equipment, and performance monitoring equipment--at a minimum. Depending on where you live, you may also consider a solar ...





Contact Us

For catalog requests, pricing, or partnerships, please visit:

<https://id2market.eu>

Phone: +34 910 56 87 45

Email: info@id2market.eu

Scan the QR code to access our WhatsApp.

