



Special elbow for solar power generation





Overview

Conduit solar conduit elbow is a fitting used to change the direction of conduit runs. It is a crucial component in electrical installations where conduit is required to make turns, typically at right angles (90 degrees) – Best for solar power utilities and projects. Non – Metallic Conduit Fittings. Start with selecting the appropriate size and type of elbow, **3. Follow safety protocols to avoid accidents, 4. Test the system after installation. The utility model relates to a special elbow for a solar energy inlet and outlet pipe, comprising an elbow, a locking part, a buckle stop and a groove arranged between the buckle stop and the locking part. - Download [PDF] This Special Issue is designed to. Precise Directional Changes: One of the most prominent advantages of the 90° elbow lies in its ability to facilitate precise directional changes in piping layouts.



Special elbow for solar power generation



EL90 Elbow-IronAxis

Versatility in Material and Configuration: Whether it's handling corrosive fluids in chemical processing plants or conveying high-pressure steam in power generation facilities, the 90° ...

solar elbow, solar elbow Suppliers and Manufacturers at Alibaba

PPR Pipe Fittings Water Heater 90 Degree Solar Heater Union Elbow \$ 0.02 - \$ 0.06 Min. Order: 100 pieces 3 yrsCN Supplier 4.3/5.0-6 reviews-"fast delivery" Contact supplier Chat now Ppr female ...



- ✓ 100KWH/215KWH
- ✓ LIQUID/AIR COOLING
- ✓ IP54/IP55
- ✓ BATTERY 6000 CYCLES



[How to match solar pipe elbows .](#) [NenPower](#)

The plumbing and solar energy sector frequently utilizes various elbow types, each categorized by specific characteristics and angles. For solar systems, 90-degree elbows are ...

Can a butt welding 45 degree elbow be used in a solar energy piping

In a solar energy piping system, the pipes are often subjected to temperature fluctuations and pressure changes. The strong joint of a butt welding 45 degree elbow can withstand these ...



CN201359167Y

The utility model relates to a special elbow for a solar energy inlet and outlet pipe, comprising an elbow, a locking part, a buckle stop and a groove arranged between the buckle stop



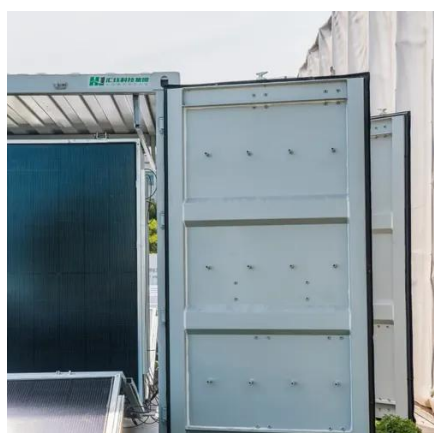
Ledes Conduit Bend Solar PVC Electrical Pipe Elbow ...

Overview Discover the Revolution in Solar Conduit Bends with ...



Special elbow for solar power generation

This Special Issue is designed to cover technical issues in advanced solar photovoltaic power generation, power generation forecasting, integrated energy applications, impact on sustainable ...



Ledes Conduit Bend Solar PVC Electrical



Pipe Elbow Gray

Overview Discover the Revolution in Solar Conduit Bends with Ledes. Introducing the Ledes Solar Conduit Bend - the ultimate outdoor routing solution designed specifically for solar power generation ...



How to install solar elbow , NenPower

A solar elbow is an integral component used in piping systems for solar thermal installations, allowing the routing of fluids to flow efficiently while minimizing resistance.

Can a titanium elbow be used in a power

In a power - generation plant, equipment needs to be both strong and lightweight. Heavy components can put extra stress on the support structures and increase the overall cost of construction and ...



Elbow

Tube solar conduit elbow is a fitting used to change the direction of conduit runs. It is a crucial component in electrical installations where conduit is required to make turns, typically at right angles ...



Contact Us

For catalog requests, pricing, or partnerships, please visit:

<https://id2market.eu>

Phone: +34 910 56 87 45

Email: info@id2market.eu

Scan the QR code to access our WhatsApp.

