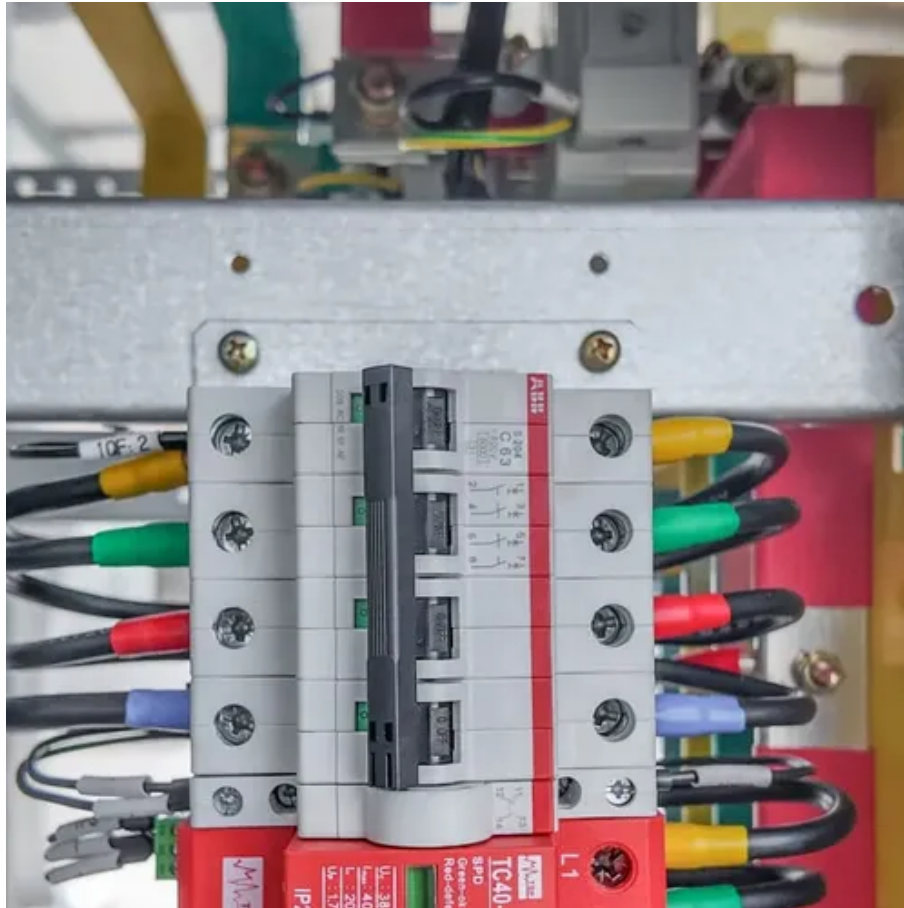




Specifications and dimensions of photovoltaic mid-panel





Overview

Analysis of solar panel dimensions and power classes, with reference sizes for 430W/550W/600W modules and corresponding roof area calculations to help select the most suitable solar panels. Standard Residential Panels Optimize Space and Handling: The industry-standard 60-cell panel dimensions (65" × 39" × 1.5") aren't arbitrary - they represent the optimal balance between power output, installation ease, and roof space utilization. At 40-46 pounds, they can be safely handled by. There are 3 standardized sizes of solar panels, namely: 60-cell solar panels size. That's basically a 66×39 solar panel. But what is the wattage?

That is unfortunately not listed at all.



Specifications and dimensions of photovoltaic mid-panel



Solar Panel Sizes: Choosing the Right Dimensions for Any Project

With solar installations booming across residential, commercial, and utility-scale projects, understanding panel dimensions has never been more important. Let's break down everything you ...

[Solar Panel Size & Dimensions Guide 2025](#) [. Complete Specs](#)

Complete guide to solar panel sizes and dimensions. Compare 60-cell vs 72-cell panels, weights, roof space requirements, and installation specs for 2025.



Standard Solar Panel Sizes And Wattages (100W-500W Dimensions)

The goal here is to get to the average solar panel size by wattage. You can find typical dimensions of 100W, 150W, 170W, 200W, 220W, 300W, 350W, 400W, and 500W solar panels summarized ...



[standard solar photovoltaic panel sizes explained](#)

Discover standard solar photovoltaic panel sizes. Choose the perfect fit for your installation with our expert guide. Learn more today!



[Solar Panel Datasheet Specifications Explained](#)

Key Takeaways of Solar Panel Datasheet Specifications. Solar panel datasheet specifications include factors such as power output, efficiency, voltage, current, and temperature coefficient, which ...



[We Analyzed 100 Solar Panels: Dimensions, Efficiency, & Load](#)

Solar panel width generally varies between 39.0 inches and 51.3 inches. A common width range of 39.1 to 41.5 inches encompasses many models across different wattages. Wider panels, such as those ...



Solar Panel Dimensions: Specifications, Power Classes, Roof Area

Analysis of solar panel dimensions and power classes, with reference sizes for 430W/550W/600W modules and corresponding roof area calculations to help select the most ...



[Detailed Guide to Solar Panel Size &](#)



Dimensions

Choosing the proper system is not only about the solar panel dimensions. You should also consider wattage, number of cells, layout possibilities, and energy consumption. Also, your ...



Current specifications and dimensions of photovoltaic panels

Solar panel size refers to the total amount of power a solar panel can generate over a period of time; Solar panel dimensions refers to the physical size of a solar panel; Solar panel sizes and wattage ...

Photovoltaic Panel Models, Specifications, and Dimensions: A

This guide dives into critical factors like model variations, technical specifications, and panel dimensions - key considerations for residential, commercial, and utility-scale projects.





Contact Us

For catalog requests, pricing, or partnerships, please visit:

<https://id2market.eu>

Phone: +34 910 56 87 45

Email: info@id2market.eu

Scan the QR code to access our WhatsApp.

