



Sunshine Grid-connected solar Inverter

 **TAX FREE**

Product Model
HJ-ESS-215A(100KW/215KWh)
HJ-ESS-115A(50KW 115KWh)

Dimensions
1600*1280*2200mm
1600*1200*2000mm

Rated Battery Capacity
215KWH/115KWH

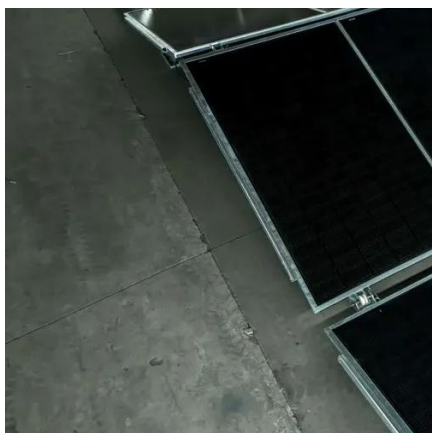
Battery Cooling Method
Air Cooled/Liquid Cooled

ENERGY STORAGE SYSTEM





Sunshine Grid-connected solar Inverter



[User Manual for SUN Grid Tie Inverter](#)

Sunshine Grid Tie Power Inverter is the world's most technologically advanced inverter for use in utility-interactive applications. This manual details the safe installation and operation of the Sunshine Grid ...

SUN Series Grid Tie Inverter Manual

This document provides installation and operation instructions for Sunshine Grid Tie Inverters intended for use with wind turbines. It describes the inverter models available for 1000W and 2000W output ...



Step 4 Selecting Correct Model of Sunshine Grid Tie Inverter

This manual provides installation and operation instructions for the SUN series grid tie power inverters, including models SUN-250G, SUN-300G, SUN-500G, SUN-600G, SUN-1000G, SUN-1500G, and ...

On-grid inverter

The Sunshine Solar Panel is a highly efficient and reliable solar energy solution designed for various applications, from residential to commercial installations.



Best Solar Grid-Connected Inverter Solutions for Home and Small ...

Choosing a solar grid-connected inverter involves balancing power needs, efficiency, and monitoring capabilities. This guide highlights five solid options suited for American households ...



Sungrow Sunshine Power Hybrid PV Inverter 33KW 50KW Solar Grid

The Sungrow Sunshine Power Hybrid PV Inverter is a high-performance solar inverter designed for on-grid systems, offering efficient DC-to-AC conversion with triple AC outputs.



G2(Generation 2)SUN Series Grid Tie Power Inverter

Sunshine Grid Tie Power Inverter is the world's most technologically advanced inverter for use in utility-interactive applications. This manual details the safe installation and operation of the Sunshine Grid ...



Sunshine 500kw Photovoltaic Inverter



Application Manual

This manual contains important instructions for Sunny Central 250U, Sunny Central 500U, Sunny Central 500HE-US and Sunny Central 500HE-CA photovoltaic (PV) inverters, that shall be



GWL SUN Series Installation And Operation Manual

To reduce the risk of electrical shock, and to ensure the safe installation and operation of the Sunshine Grid Tie Inverter, the following safety symbols appear throughout this document to indicate ...



Contact Us

For catalog requests, pricing, or partnerships, please visit:

<https://id2market.eu>

Phone: +34 910 56 87 45

Email: info@id2market.eu

Scan the QR code to access our WhatsApp.

