



Tbilisi geographic locations



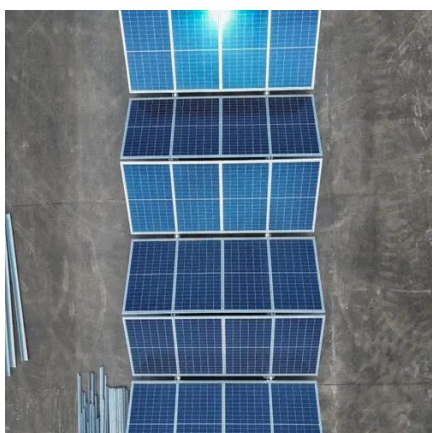


Overview

Tbilisi is located in the eastern part of Georgia, in the Caucasus region of Eurasia. Tbilisi is a. Tbilisi (/ təbɪˈlɪːsi, təˈbɪlɪsi / [8] tā-bil-EE-see, tə-BIL-iss-ee; [8] Georgian: თბილისი, pronounced [tʰbilisi] [9] or ტფილისი, tʰpilisi, [tʰˈpilisi]) is the capital and largest city of Georgia, located on the banks of the Kura River. Photo: Wikimedia, CC. It sits on the banks of the Kura River, at coordinates 41. Click "full screen" icon to open full mode.



Tbilisi geographic locations



Tbilisi

OverviewNames and etymologyHistoryPolitics and administrationGeographySportsMediaCulture

Tbilisi is the capital and largest city of Georgia, located on the banks of the Kura River. With more than 1.3 million inhabitants, it contains almost one third of the country's population. Tbilisi was founded in the fifth century AD by Vakhtang I of Iberia and has since served as the capital of various Georgian kingdoms and republics. Between 1801 and 1917, then part of the Russian Empire, it was the seat of the Caucasus Viceroyalty, ...

[Where is Tbilisi , Location of Tbilisi in Georgia Map](#)

Tbilisi is located in the eastern part of Georgia, in the Caucasus region of Eurasia. It is the capital and largest city of Georgia, situated along the banks of the Kura River. Its cobbled streets wind through ...



Tbilisi

Location of Tbilisi on T'bilisi map. Tbilisi is located at 41°41'39"N 44°50'1"E (41.6941100, 44.8336800). Click "full screen" icon to open full mode. View satellite images.

Tbilisi Map



Tbilisi, is the capital city of the country of Georgia, lying on the banks of the Mtkvari River. The metropolitan area covers 726 km² and has a population of approximately 1.5 million.



[Geofan: Visual Geography Tools & Articles](#)

This page provides comprehensive geographic and demographic information about Tbilisi. Use the interactive map tools to explore distances, areas, and elevations from this location.

Tbilisi location on the Georgia Map

This map shows where Tbilisi is located on the Georgia Map. You may download, print or use the above map for educational, personal and non-commercial purposes. Attribution is required. For any ...



Map of Tbilisi, Georgia

Find out more with this detailed interactive online map of Tbilisi downtown, surrounding areas and Tbilisi neighborhoods. If you are planning on traveling to Tbilisi, use this interactive map to help you locate ...

Tbilisi



Tbilisi's history is reflected in its architecture, which is a mix of medieval, neoclassical, Beaux Arts, Art Nouveau, Stalinist, and Modern structures. Historically, Tbilisi has been home to people of diverse ...



[Tbilisi in Georgia , Facts and Information about Tbilisi](#)

Tbilisi(Tbilisi) is a very large place in the region of Tbilisi in Georgia with a population of approximately 1,049,498 people and is one of the largest places in Georgia.

[Tbilisi , Georgia, Map, History, & Facts , Britannica](#)

Tbilisi, capital of the republic of Georgia, on the Mtkvari (Kura) River at its dissection of the Trialeti (Trialetsky) and Kartli (Kartliysky, or Kartalinian) ranges.



Tbilisi, Georgia: Location, Map, Coordinates, and Capital Insights

It sits on the banks of the Kura River, at coordinates 41.7151° N latitude and 44.8271° E longitude. Tbilisi is in eastern Georgia and is the country's cultural and economic center, with ...



Contact Us

For catalog requests, pricing, or partnerships, please visit:

<https://id2market.eu>

Phone: +34 910 56 87 45

Email: info@id2market.eu

Scan the QR code to access our WhatsApp.

