



Tcl photovoltaic panel 630





Tcl photovoltaic panel 630

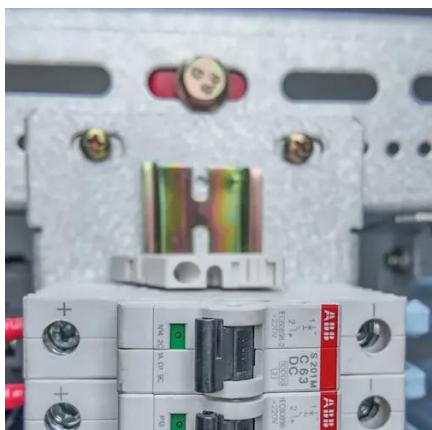


PHOTOVOLTAIC MODULES

MADE FOR REAL WEATHER · strong frame and cell connection design helps to protect the panels against weather challenges like temperature swings, snow loads, and hail.

Module HSM-ND66-GR

TCL Photovoltaic Technology is a subsidiary of the Chinese TCL Technology Group, specializing in green energy solutions. Founded in China, the company is renowned for its innovations in the ...



[TCL G12R-66P HSM-ND66-GR610 605-630 1500V Silver Frame ...](#)

Get the best deal on TCL G12R-66P HSM-ND66-GR610 605-630 1500V Silver Frame Bifacial solar panel from multiple sellers on sun.store. Efficiency and choice in one marketplace.

PV Module

Ideal for residential, commercial, and utility applications. The multi-specification version adapts to different application scenarios and the differentiated needs of different customer groups.



[tcl_solar_HSM-ND66-GR605-625_wht_dual_glass_datasheet_en...](#)

The additional gain from the back side of the panel compared to the power of the front side of the panel at the standard test conditions. It depends on mounting (structure, height, tilt angle etc.) and albedo ...

TCL HSM-ND66-GR620W 620 Watt

Install clean energy with the remarkable solar panel HSM-ND66-GR620W (BIF, DG) from TCL. This state-of-the-art solar product combines outstanding quality and environmentally conscious design for ...



[TCL Solar , High-Efficiency Solar Panels & Technology](#)

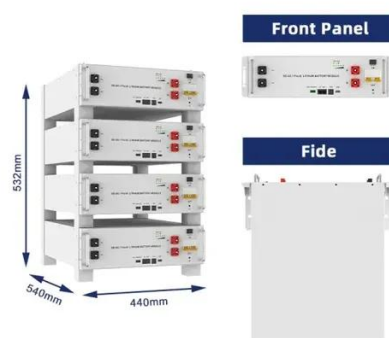
TCL Solar is a global leader in N-Type TOPCon and Back Contact solar technology. Discover high-performance, durable solutions for your home, business, and large-scale energy projects.

TCL Authorized Dealer Factory Price



Solar Panel 630W 635W 640W ...

We are one of the largest PV suppliers in China and ranked in the top 3 in the industry. Our warehouse area is over 50,000m², and we have sufficient stock for quick delivery.



[Resources & Insights on Solar Technology](#) [TCL Solar](#)

Access datasheets, installation manuals, warranties, and certifications in the TCL Solar Resource Centre, designed for professionals using TOPCon, IBC, and BC panels.



Contact Us

For catalog requests, pricing, or partnerships, please visit:

<https://id2market.eu>

Phone: +34 910 56 87 45

Email: info@id2market.eu

Scan the QR code to access our WhatsApp.

