



Telecommunication company signal base station





Overview

Base station (or base radio station, BS) is - according to the 's (ITU) (RR) - a " in the ." A base station is called in, in (), and in . The term is used in the context of, an.



Telecommunication company signal base station

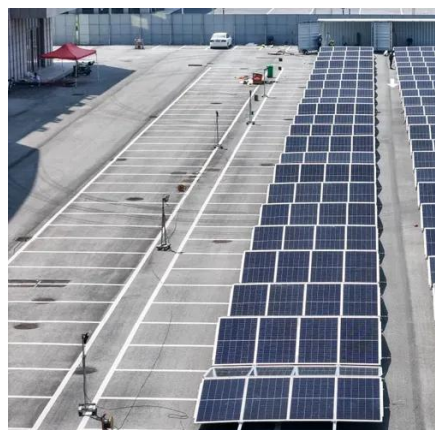


[What are Base Station in Telecommunications?](#)

The Backbone of Wireless Networks A base station connects your phone to the network. It acts as a hub between mobile devices and the core system. Base stations form the backbone of ...

The Base Station in Wireless Communications: The Key to Modern

Equipped with an electromagnetic wave antenna, often placed on a tall mast, the base station enables communication between mobile terminals (such as mobile phones or pagers) and the ...



What Is A Base Station?

A base station is an integral component of wireless communication networks, serving as a central point that manages the transmission and reception of signals between cellular networks ...

[What is Telecommunication Base Station, China Hop](#)

Generally speaking, a base station consists of three antennas, each transmitting signals in a 120 degree direction towards the surrounding area, which together provide seamless coverage of 360 degrees.

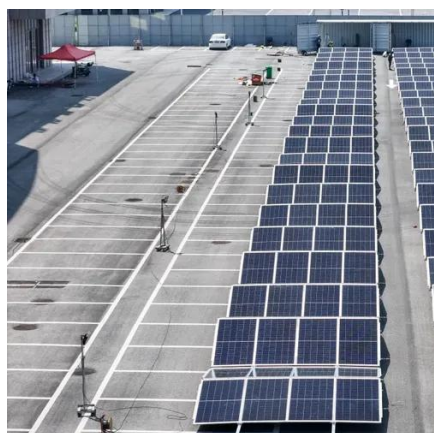


What Is a Telecom Base Station and How Does It Work?

A base station (BS)--short for Base Transceiver Station--is a core component of a mobile communication network. It serves as the interface between mobile devices and the operator's ...

What is a Base Station in Telecommunications?

Discover the role and functionality of a base station in telecommunications networks. Learn how these critical components manage communication between mobile devices and the network, ensuring ...



Base station

OverviewLand surveyingComputer networkingWireless communicationsSee also

Base station (or base radio station, BS) is - according to the International Telecommunication Union's (ITU) Radio Regulations (RR) - a "land station in the land mobile service." A base station is called node B in 3G, eNB in LTE (4G), and gNB in 5G. The term is used in the context of mobile telephony, wireless computer networking an...



What Is a Base Station? Definition and How It Works

Define the central communication hubs of modern wireless technology. Learn how base stations manage capacity and ensure reliable connections.



Base Stations: The Core and Future of Telecom Networks

At the heart of this connectivity lies a vital piece of telecom infrastructure: the telecom base station. Serving as the backbone of mobile communication networks, base stations are crucial for signal ...

Base Stations

The present-day tele-space is incomplete without the base stations as these constitute an important part of the modern-day scheme of wireless communications. They are referred to as cell ...





Contact Us

For catalog requests, pricing, or partnerships, please visit:

<https://id2market.eu>

Phone: +34 910 56 87 45

Email: info@id2market.eu

Scan the QR code to access our WhatsApp.

