



# The best angle for photovoltaic panels is





## Overview

---

Generally, the best angle for solar panels is equal to your latitude. For example, if you live at a latitude of 40 degrees north, your panels should be tilted at a 40-degree angle. A correctly tilted system can improve efficiency by 5-10% annually, reducing payback time and boosting long-term savings. In this guide, we'll break down. The tilt directly affects how much sunlight your system captures and how much power it produces. It varies based on your location, the pitch of your roof, and your energy goals. True direction aligns with the Earth's axis and differs from compass direction, which aligns with the magnetic poles. The photovoltaic cells absorb the most solar energy available at that instant when the sun's rays strike. The sun's path across the sky depends on where you live. In the Southern Hemisphere, it works the other way around.



## The best angle for photovoltaic panels is

---



### [What is the best angle and orientation for solar panels?](#)

This angle, usually between 30 and 45 degrees, ensures your solar panels catch the most sunlight throughout the year. So, tilt your panels to the same angle as your latitude for optimal ...

### What's the Best Angle for Solar Panels to Get Maximum Output?

Learn what goes into determining the best angle for solar panels to optimize energy output and how you can ensure your solar system is designed to maximize efficiency of your solar ...



### Solar Panel Angle Calculator

Our solar panel angle calculator takes the guesswork out of panel positioning, suggesting panel tilt angles based on your location's latitude and your willingness to reposition based on the sun's ...



### What's the Best Angle for Solar Panels to Get Maximum Output?

Solar panel direction and tilt determine how much direct sunlight is received daily. For maximum efficiency, panel surfaces should face the sun directly as long as possible each day. Your ...



## Optimum Tilt of Solar Panels

Use one of these formulas to find the best angle from the horizontal at which the panel should be tilted: If your latitude is below 25°, use the latitude times 0.87. If your latitude is between ...



## [What's the Best Angle for Solar Panels? Optimum Tilt](#)

The angle of your solar panels is one of the most important factors in how well your system performs. By setting the right tilt, you can capture more sunlight, reduce losses, and improve ...



## [What Is the Best Angle for Solar Panels?](#)

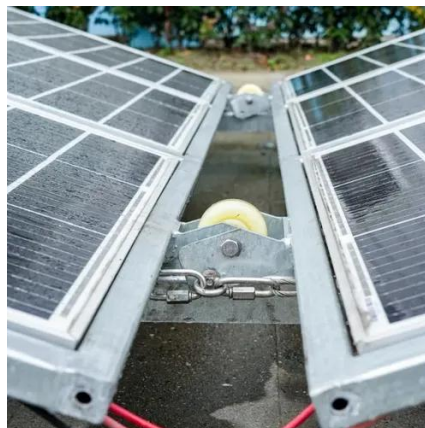
Photovoltaic (PV) panels must absorb as much sunlight as possible to operate at peak performance. The more direct sunlight hits the panels, the more efficiently they can convert solar ...

## [Solar Angle Secret: Are Your Panels Tilted](#)



## Right?

Although direct sunlight exposure is the aim, the "best" fixed angle is not a single figure relevant everywhere. The perfect tilt for a given installation is found by several interactions. The ...

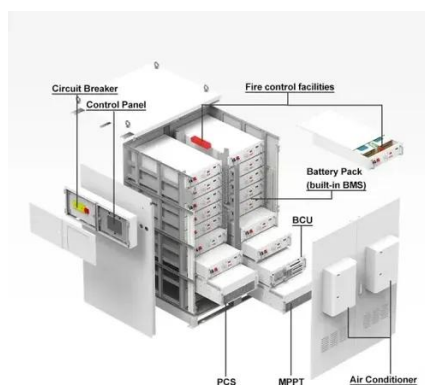


## Solar Panel Best Angle , Tilt & Orientation Guide 2025

In this guide, we'll break down the science behind the best solar panel angle, explain how to calculate it based on latitude, show seasonal adjustments, and share competitor-winning insights ...

## Best Angle for Solar Panel Installation: Complete Guide 2025

The best angle for solar panels is not one-size-fits-all -- it depends on your latitude, direction, and whether you want fixed or adjustable tilt. For most homes, the golden rule is simple: tilt = latitude, ...





## Contact Us

---

For catalog requests, pricing, or partnerships, please visit:

<https://id2market.eu>

Phone: +34 910 56 87 45

Email: [info@id2market.eu](mailto:info@id2market.eu)

Scan the QR code to access our WhatsApp.

