



The best orientation for photovoltaic panels in winter



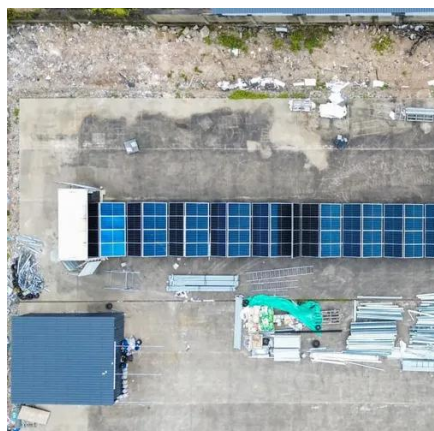


Overview

The optimal tilt angle for solar panels typically equals your location's latitude. For most of the continental United States, this means angles between 25-45 degrees. This approach works because: For maximum energy production, consider these seasonal adjustments: Formula: Optimal tilt = Latitude \pm 0° This provides the best year-round average. The solar panel's best angle determines how much sunlight your panels capture throughout the year, directly impacting energy production and ROI. A correctly tilted system can improve efficiency by 5-10% annually, reducing payback time and boosting long-term savings. In this guide, we'll break down. The following table illustrates the different orientation options for solar panels: These systems generate 95% of the maximum yield and thus only 5% less than south-facing systems.



The best orientation for photovoltaic panels in winter



Solar Panel Placement Tips for Maximum Efficiency in Cold Climates

A general rule is to set your solar panel tilt equal to your latitude, then add about 10-15 degrees during winter months. For example, in Montreal, which is around 45 degrees latitude, panels ...

[Solar Panel Best Angle , Tilt & Orientation Guide 2025](#)

In this guide, we'll break down the science behind the best solar panel angle, explain how to calculate it based on latitude, show seasonal adjustments, and share competitor-winning insights ...



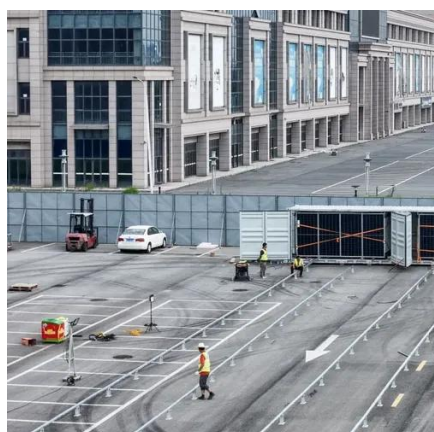
What is the optimal orientation and tilt angle for solar panels

In this case, for the solar panels to get their best performance, a steep angle of 60° is best. During the spring the best angle is 45°, and during the summer when the sun is high in the sky, ...



[Best Angle And Orientation For Solar Panels - Forbes Home](#)

To make the best out of the available solar radiation, compensating the tilt angle of your panels according to the different positions of the sun will ...



[Best Tilt Angle For Solar Panels \[Summer + Winter\]](#)

To make the best out of the available solar radiation, compensating the tilt angle of your panels according to the different positions of the sun will optimize power output for your solar panel ...

[Best Angle And Orientation For Solar Panels - Forbes Home](#)

For winter and the cooler months, the ideal solar panel angle will be 15 degrees added to your latitude. The proper angle of your solar panels will not only be affected by your ...



[Optimizing Solar Panel Tilt and Orientation](#)

Static mounting is typical, but some homeowners use seasonal adjustments: Latitude $\pm 15^\circ$: latitude $+15^\circ$ in winter, latitude -15° in summer can yield ~4% more annual energy. Reddit ...

[Best Solar Panel Orientation for Maximum](#)



Output

In winter, a steeper tilt can capture lower-angled sunlight more effectively. These are the most common. They're affordable and have fewer moving parts. The orientation is set during ...



Solar Panel Direction & Orientation: 2025 Complete Guide

Discover the optimal direction and angle for solar panels to maximize energy output. Complete guide with calculations, tools, and location-specific recommendations for 2025.

What is the best angle and orientation for solar panels?

To mitigate winter production dips, tilt your panels steeper than your latitude, around 60 degrees to maximize sunlight absorption. Installing your panels at an angle also allows snow to slide ...



Best Orientation for Solar Panels: Our Expert Tips

How solar panels should be oriented for an optimum energy output? Learn the most important facts and tips on best orientation of solar panels.



Contact Us

For catalog requests, pricing, or partnerships, please visit:

<https://id2market.eu>

Phone: +34 910 56 87 45

Email: info@id2market.eu

Scan the QR code to access our WhatsApp.

