

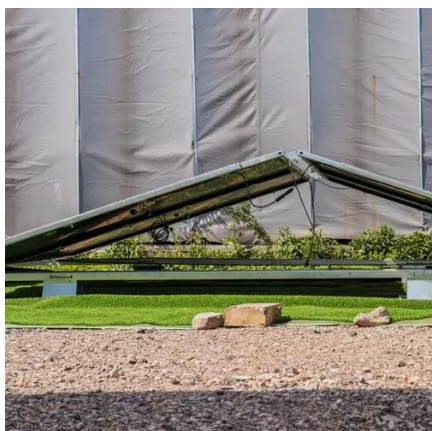


The bus voltage of the solar inverter is unbalanced





The bus voltage of the solar inverter is unbalanced



SunSynk 8KW F26 bus unbalance fault

Without grid AC applied to inverter AC input, pushing this breaker up gives F26 error, and inverter switches output off. With grid AC applied to inverter AC input, pushing this breaker up gives ...

Test of PV inverters under unbalanced operation

Therefore, this study investigated the performance of a three-phase PV inverter under unbalanced operation and fault conditions. The inverter is tested in stable power system operation and during ...



Control Strategy for Solar Inverters in Unbalanced Grid Conditions

In this article, I explore the design of control strategies for solar inverters to address these issues, focusing on phase-locked loop (PLL) techniques and control methodologies for unbalanced ...



Bus Voltage Fault

Use a multimeter to measure the voltage at each MPPT, make sure that the Max. PV input voltage in Datasheet is not exceeded. If the measured voltage value is close to the maximum MPPT range ...

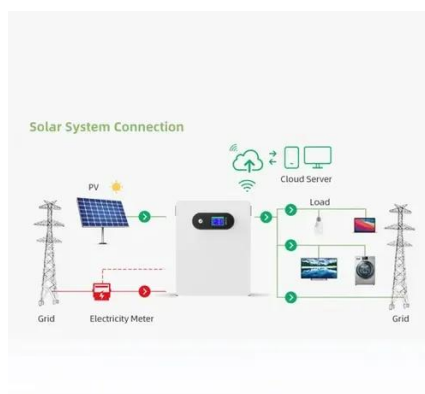


Photovoltaic Inverter Bus Voltage Abnormalities: Causes, Risks, and

Why Your Solar System's Heartbeat Might Be Failing Ever wondered why your photovoltaic inverter suddenly throws a bus voltage error? Well, you're not alone. Over 38% of solar ...

DC-bus voltage balancing control for 3-level DC/DC converters in

3-level converters feature high voltage and high efficiency, which are widely applied for renewable generation systems, such as PV, and fuel cell systems [1]. The dc-bus voltage balancing ...



[MPP solar LV6048 bus voltage is too high](#)

Hi to everyone. I'm Constantine. I'm new to the forum and to solar. I am trying to finally back feed to the grid, but this fault code came up (08 buss voltage is too high). How do I fix this?

G-PHASE: DC Bus Unbalance



The "G-PHASE" error indicates an imbalance in the DC voltage levels within the inverter's internal DC bus. The DC bus is a critical component that converts the variable DC power from the solar panels ...



51.2V 300AH



Maximum power extraction and DC-Bus voltage regulation in grid

Nevertheless, if the power inductance is important compared to the DC-Bus capacitor, the DC-Bus voltage of the inverter may get unbalanced, resulting in an overvoltage or undervoltage .

[UN-BUS and UNB-BUS Alarm : Solis North America](#)

The UN-BUS fault occurs when the inverter detects abnormally low DC voltage on the internal DC bus bar. This can also happen if the inverter experiences an internal failure.

TAX FREE    

ENERGY STORAGE SYSTEM

Product Model
HJ-ESS-215A(100KW/215KWh)
HJ-ESS-115A(50KW/115KWh)

Dimensions
1600*1280*2200mm
1600*1200*2000mm

Rated Battery Capacity
215KWH/115KWH

Battery Cooling Method
Air Cooled/Liquid Cooled



Contact Us

For catalog requests, pricing, or partnerships, please visit:

<https://id2market.eu>

Phone: +34 910 56 87 45

Email: info@id2market.eu

Scan the QR code to access our WhatsApp.

