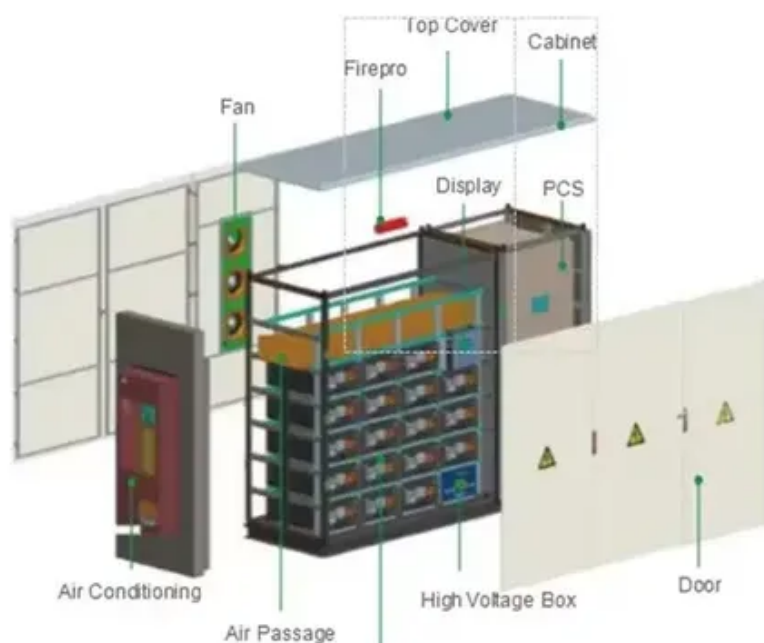




The container outdoor power supply is overloaded and the power is cut off





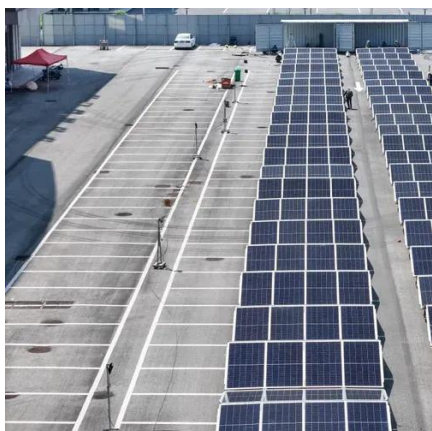
Overview

Need to activate your container's outdoor power supply but unsure where to start?

This practical guide walks you through the process while addressing common challenges in industrial and renewable energy systems. Understanding Container Power Systems Outdoor container power supplies are widely used. Overload protection is a safety mechanism integrated into outdoor portable power stations to safeguard against excessive power draw. When the total power consumption from connected devices and equipment exceeds the maximum capacity of the power station, an overload situation occurs. It may do this through shutting down. At its core, an electrical circuit is a closed path that allows electricity to flow from your electrical panel to the various appliances and outlets in your home. Each circuit is designed to handle a specific load, usually measured in amps. These projects might include container homes, pop-up retail units, or.



The container outdoor power supply is overloaded and the power is c

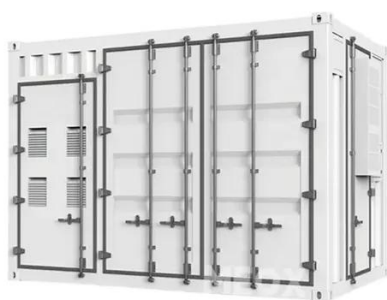


[Understanding Overload Protection in Outdoor Power ...](#)

In this blog post, we will delve into what overload protection is and why it is a critical safety feature in outdoor portable power stations.

[Overload Power Station Ports: Fixes & Prevention Tips](#)

Overloaded power station? Find practical solutions and prevention strategies to ensure safe and reliable power for all your devices.



Electrical Integration in Shipping Container Projects: A Practical

Learn how to safely and efficiently design and install electrical systems in shipping container builds. This guide covers power distribution, wiring, grounding, lighting, and code ...

Reefer Container Power Supply: Your Ultimate Guide to Efficient ...

Reefer containers, or refrigerated containers as they're known, are a lifeline for industries like food and pharmaceuticals. These specialized units rely on consistent power supply to maintain ...



How to Fix an Overloaded Circuit?

A circuit overload is caused by too many devices pulling power, while a short circuit happens when electricity flows along an unintended path, often caused by exposed wires or faulty ...



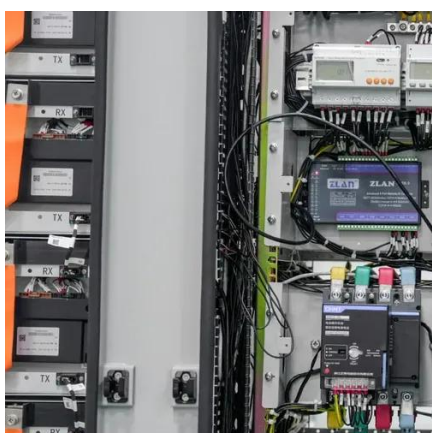
[An Essential Guide to Shipping Container Electrical Works](#)

Learn how to safely install electrical systems in shipping containers, from wiring to power sources, with essential tips for efficiency and safety.



How to Fix an Overloaded Circuit?

Learn how to safely install electrical systems in shipping containers, from wiring to power sources, with essential tips for efficiency and safety.



Container Outdoor Power Solutions:



Reliable Energy for Remote

Imagine powering an entire music festival or mining operation without grid access. Container outdoor power systems have become the go-to solution for temporary and permanent off-grid operations. ...



[The container s outdoor power supply is turned off](#)

Apr 28, 2025 · A Container Power Station is a versatile and portable energy solution widely used in remote locations, construction sites, and emergency power supply scenarios.

How to Turn On the Outdoor Power Supply of a Container: A Step-by ...

Need to activate your container's outdoor power supply but unsure where to start? This practical guide walks you through the process while addressing common challenges in industrial and renewable ...





Contact Us

For catalog requests, pricing, or partnerships, please visit:

<https://id2market.eu>

Phone: +34 910 56 87 45

Email: info@id2market.eu

Scan the QR code to access our WhatsApp.

