



The most reasonable photovoltaic panel installation structure





Overview

The Renewable Energy Ready Home (RERH) specifications were developed by the U. Environmental Protection Agency (EPA) to assist builders in designing and constructing homes equipped with a set of features that make the installation of solar energy systems after the completion of. The very first step in picking the very best framework for photovoltaic panels is to carry out a site assessment. This entails evaluating the placement of your solar installment to determine the optimal positioning and orientation of the panels. Is it a sprawling commercial rooftop?

A slightly sloped residential home?

A ground-mounted array?

Every single location throws its own specific punches.



The most reasonable photovoltaic panel installation structure

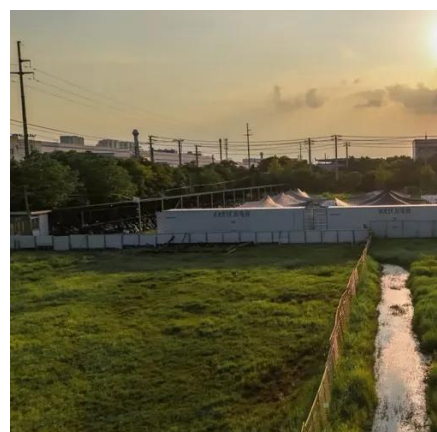


[Solar Panel Mounting Structures: A Comprehensive Guide](#)

As the most common solar installation structure type and easiest to installed, they are installed directly on the building roof for the space usage efficiency. There are two main types of roof ...

[Solar Photovoltaic: SPECIFICATION, CHECKLIST AND GUIDE](#)

As the most common solar installation structure type and easiest to installed, they are installed directly on the building roof for the space usage ...



Solar Panel Installation Made Simple: Your Step-by-Step Layout

Whether you're a DIY enthusiast or working with professional installers, a detailed installation diagram becomes your roadmap to a successful solar project, ensuring proper ...

[Solar Photovoltaic: SPECIFICATION, CHECKLIST AND GUIDE](#)

Install and label a 4' x 4' plywood panel area for mounting an inverter and balance of system components. Install a 1" metal conduit for the DC wire run from the designated array location to the ...



Photovoltaic Structure Installation - Best Practices

Proper installation of a photovoltaic system requires careful planning, the selection of appropriate materials and technologies, and precise execution at every stage.



Structural Requirements for Solar Panels -- Exactus Energy

This comprehensive guide outlines the structural requirements for solar panels and provides an overview on the inner workings of the installation process.



Structures for photovoltaic solar panels

Description and characteristics of the different types of structures to fix photovoltaic solar panels in a solar installation.



Solar mounting structure construction



[methods -- RatedPower](#)

Here we discuss the four-step approach to selecting the right mounting structure for your PV project. What happens when mounting structures fail? Solar panel mounting systems play a key ...



[Complete Solar Panel Installation Guide](#)

Two main factors come into play when deciding where to install solar panels: tilt angle and orientation. If you're in the United States, the optimal tilt angle typically ranges between 15 and ...

[Solar PV Mounting Guide: Top Structures Compared](#)

Selecting the optimal solar mounting solution impacts energy production, installation costs, and long-term reliability. This comprehensive guide examines key options for residential, commercial, and ...



Choosing the Best Structure for Solar Panels: A Comprehensive Guide

In this post, we will explore the basics of the photovoltaic panel framework and offer advice on picking the best framework for your solar setup. The very first step in picking the very best ...



Contact Us

For catalog requests, pricing, or partnerships, please visit:

<https://id2market.eu>

Phone: +34 910 56 87 45

Email: info@id2market.eu

Scan the QR code to access our WhatsApp.

