



# The photovoltaic panel is connected to the color steel plate





## Overview

---

Installation of solar energy systems on color steel plates can be efficiently accomplished by following these key steps: 1) Selecting appropriate solar panels designed for metal roofing, 2) Ensuring proper structural integrity of the steel plate to support the system, 3). Installation of solar energy systems on color steel plates can be efficiently accomplished by following these key steps: 1) Selecting appropriate solar panels designed for metal roofing, 2) Ensuring proper structural integrity of the steel plate to support the system, 3). Installation of solar energy systems on color steel plates can be efficiently accomplished by following these key steps: 1) Selecting appropriate solar panels designed for metal roofing, 2) Ensuring proper structural integrity of the steel plate to support the system, 3) Utilizing specialized. Attaching a solar panel connector to a PV wire is a two-step process: (1) crimping and (2) tightening the connector, to do this you require a wire stripper, crimping tool, and a solar panel connector assembly tool. Installing solar panels on metal roofs involves applying photovoltaic (PV) panels. How to connect the color under t nconnector is used to interconnect solar panels in PV installations. Their main task is ensuring power continuity and electricity flow throughout the whole solar array. Mechanical testing, modular design, and regular inspections keep your system reliable and cost-effective. Start with a thorough site survey and feasibility check to ensure your location. With industrial facilities accounting for 40% of global energy consumption, integrating solar panels onto color steel plate roofs has become a game-changer for sustainable manufacturing. But what makes this connection so challenging?

Let's break down the critical factors driving innovation in this. The PV panels are fixed with side pressure blocks and medium pressure blocks.



## The photovoltaic panel is connected to the color steel plate

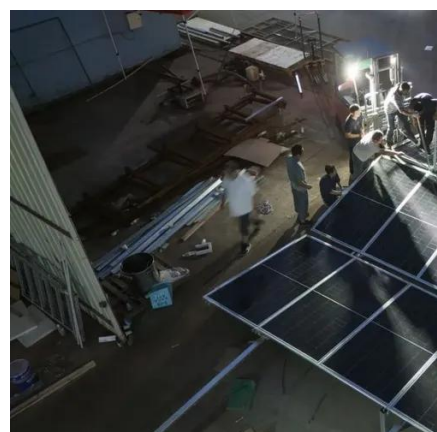


### How to connect the color steel plate under the photovoltaic ...

the inverter or service panel requires selecting the right wire. For rooftop PV installations, you can use the PV wire, known in Europe as TUV PV Wire or EN 50618

### Photovoltaic Connecting Plate Steel Structure: The Backbone of ...

Ever wondered what holds those shiny solar panels in place when Mother Nature throws her worst tantrums? Enter the photovoltaic connecting plate steel structure - the unsung hero of solar energy ...



### How to install solar panels on color steel plates , NenPower

To install solar panels on color steel plates, it is essential to follow a systematic approach ensuring durability, efficiency, and safety. 1. Understand the type of color steel plates to use, 2. ...

### Steel Structures for PV Panel

Steel structures for PV panels are complex metal structures, consisting of lightweight, structural open section profiles. They are used to support photovoltaic panels in PV park installations.

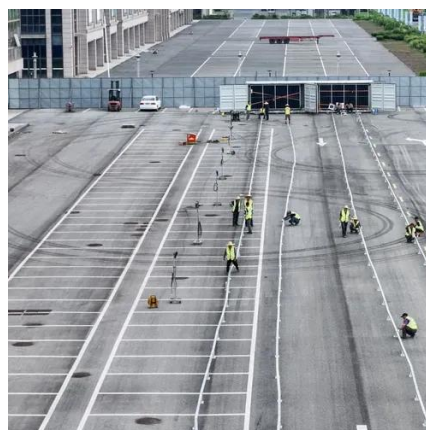


## Steel Structure for PV Panel construction: 12 key process steps and

You can achieve a reliable Steel Structure for PV Panel installation by following each of the 12 steps in this guide. Use the checklist to avoid common mistakes and keep your system ...

## Innovative Solutions for Connecting Photovoltaic Panels to Color ...

With industrial facilities accounting for 40% of global energy consumption, integrating solar panels onto color steel plate roofs has become a game-changer for sustainable manufacturing.



## [How to lay photovoltaic panels on color steel plates](#)

Structural framework: This is the main support structure made of metal (often aluminum or galvanized steel), designed to hold the weight of the solar panels and withstand environmental



## Installation of photovoltaic panel



## accessories on color steel plate

Can a TPO roof be installed on a framed solar panel? It is applicable to either frameless or framed solar panels. With the mounting system, the PV module can be placed onto the color steel tile substrate ...



## [How to install solar energy on color steel plate , NenPower](#)

Certain types of solar panels perform better on color steel plates, designed specifically for metal applications. Thin-film solar panels are often ideal for these platforms because of their ...

## [How to connect photovoltaic panels to color steel plates](#)

Installing solar panels on metal roofs involves applying photovoltaic (PV) panels directly onto the roof's surface. This method offers several advantages, including the durability and longevity of metal roofing





## Contact Us

---

For catalog requests, pricing, or partnerships, please visit:

<https://id2market.eu>

Phone: +34 910 56 87 45

Email: [info@id2market.eu](mailto:info@id2market.eu)

Scan the QR code to access our WhatsApp.

