



# The photovoltaic support piles need to be reinforced





## Overview

---

The support material needs to be strong and stiff enough to withstand the weight of the PV modules and wind loads. At present, solar steel brackets mainly use lightweight structural steel and small-section ordinary steel structural steel, which can meet the structural. Did you know that 62% of solar farm structural failures stem from improperly driven foundation piles?

As solar installations surge globally—with a projected 18% year-over-year growth through 2026—getting pile depth right has become mission-critical. But here's the kicker: there's no universal. As the demand for renewable energy increases—solar farms are becoming an ideal market for pile driving contractors due to the need for stable, long-lasting foundations that can support large-scale solar installations. The same. The installation selection of photovoltaic ground brackets is mainly based on factors such as the fixing method of the bracket, terrain requirements, material selection, and the weather resistance, strength, and stiffness of the bracket. First, there are many fixing methods, such as pile foundation. Commonly used foundation types for PV mounts include reinforced concrete independent foundations, reinforced concrete strip foundations, helical steel pile foundations, reinforced concrete pile foundations, and rock anchor foundations. The ground screw load test was performed to prove the axial pile capacity for the advantage of engineering design for PV mounting structure recommended to reduce the impact.



## The photovoltaic support piles need to be reinforced



### Photovoltaic ground bracket installation options

The support material needs to be strong and stiff enough to withstand the weight of the PV modules and wind loads. At present, solar steel brackets mainly use lightweight structural steel and small-section ...

### Photovoltaic support pile test requirements

The pile foundations need to meet specific bearing capacity requirements in order to provide structural support for photovoltaic systems. In this paper, based on an offshore photovoltaic

### ESS



### How Deep Should Foundation Piles for Photovoltaic Supports Be ...

As solar installations surge globally--with a projected 18% year-over-year growth through 2026--getting pile depth right has become mission-critical. But here's the kicker: there's no ...



### Photovoltaic Support Piles: The Unsung Heroes of Solar Energy ...

When a Bavarian solar farm encountered groundwater issues, engineers deployed fiberglass-reinforced composite piles--a material typically used in offshore wind farms.



## Photovoltaic System Foundations: Key Factors for Optimal Selection

A reinforced concrete strip foundation is a type of foundation where beams are set between the front and rear columns of the photovoltaic (PV) mount. This arrangement shifts the ...



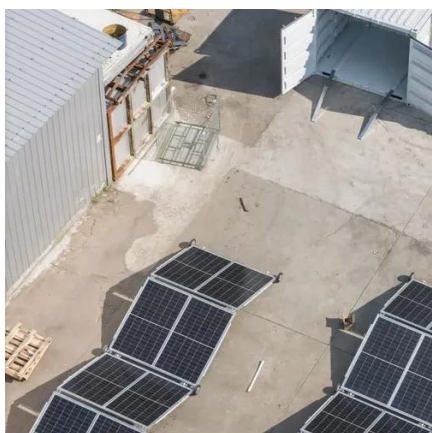
## Study on the bearing capacity optimization and performance of

This study aims to examine the factors influencing the bearing characteristics of the serpentine piles.



## Ground Mounted PV Solar Panel Reinforced Concrete Foundation

For illustration and purposes, the following figures provide a sample of the input modules and results obtained from an spMats model created for the ground mounted PV solar panel reinforced concrete ...



## Foundations of Solar Farms:



## Choosing the Right Piles and Installation

Projects requiring high load capacities--such as those with large, heavy solar panels or in regions with significant wind forces--may necessitate the use of concrete or composite piles. ...



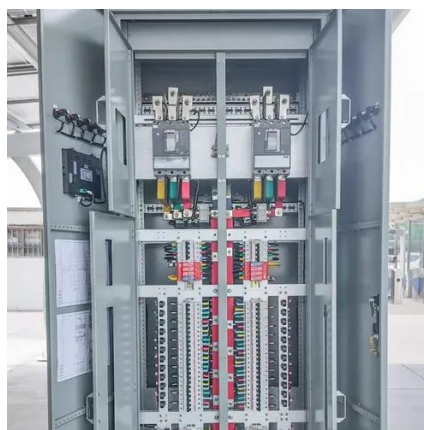
### [Photovoltaic support pile foundation anti-pullout](#)

Photovoltaic support foundations are important components of photovoltaic generation systems, which bear the self-weight of support and photovoltaic modules, wind, snow, earthquakes and other loads.



### [Photovoltaic support installation cast-in-place piles](#)

As the demand for renewable energy increases--solar farms are becoming an ideal market for pile driving contractors due to the need for stable, long-lasting foundations that can support large-scale ...





## Contact Us

---

For catalog requests, pricing, or partnerships, please visit:

<https://id2market.eu>

Phone: +34 910 56 87 45

Email: [info@id2market.eu](mailto:info@id2market.eu)

Scan the QR code to access our WhatsApp.

