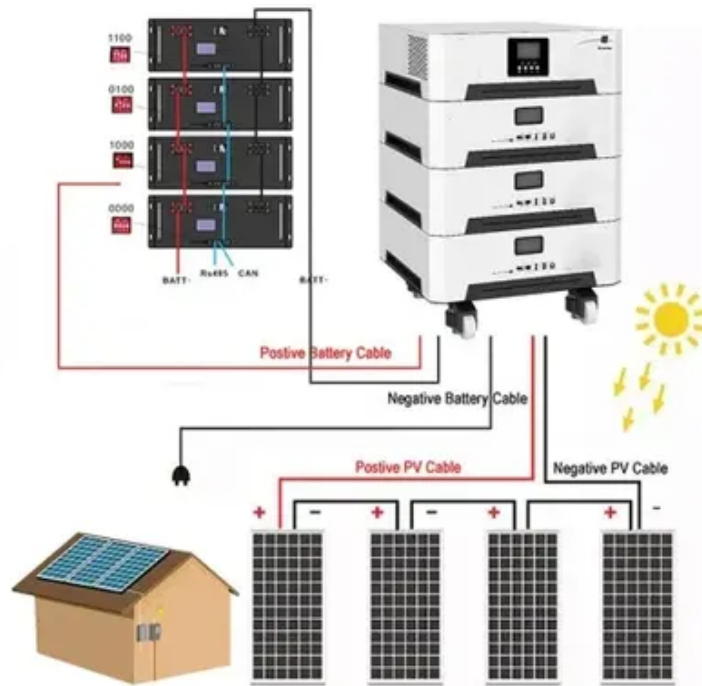




The relationship between solar power generation and angle





Overview

The angle at which solar panels are installed significantly influences the amount of sunlight they can capture. Properly adjusting the panel angle ensures that the panels receive the maximum solar radiation throughout the day, leading to increased energy production and improved efficiency. The angle between a photovoltaic (PV) panel and the sun affects the efficiency of the panel. That is why many solar angles are used in PV power calculations, and solar tracking systems improve the efficiency of PV panels by following the sun through the sky. As this industry develops, the demand for increasingly sophisticated and detailed designs in solar power station construction increases.



The relationship between solar power generation and angle



THE EFFECT OF PHOTOVOLTAIC (PV) PANEL TILT ANGLE ...

According to the investigations, tilt angle that is known as inclined angle of the photovoltaic (PV) panel, is changeable due to the location of place, climatic conditions and the solar radiation. In Cyprus for ...

Photovoltaic Efficiency: Solar Angles & Tracking Systems

Below is an overview of the angles involved in calculating the amount of solar radiation that a PV panel receives at any given time (also see Figure 3). The angle at which the sun hits a PV panel is the ...



Impact of Optimized Tilt and Orientation on Solar Power Generation

Different PV technologies and system designs require specific tilts and orientations in their construction and installation to ensure optimal power generation from solar power stations. In ...



An experimental study on determination of optimal tilt and orientation

The performance of PV panels at different azimuths and tilts on power output is examined and compared. Experimental results have indicated that panel tilt and azimuth angles



significantly ...



Optimizing Solar Power Generation: A Guide to Precise Solar ...

Optimizing the tilt angle of solar panels is crucial for maximizing energy harvest. The angle at which solar panels are installed significantly influences the amount of sunlight they can capture.



How the Angle Affects Solar Panels Efficiency

Getting the angle right can be the difference between a good solar investment and a great one. This seasonal guide will break down why tilt is so important, how to find the optimal angle for your home, ...



Analysis of the impact of irradiance, temperature and tilt angle on the

This paper exploits the tilt angle and establishes an empirical relation among optimum tilt angle, module temperature and ambient temperature. Moreover, estimating accurate solar ...



Maximize the Electricity Production



from PV System Employing the

With the intention to optimize the amount of solar radiation that is taken in by a photovoltaic (PV) panel and, therefore, the amount of solar power that is generated, it is essential to determine the optimal tilt ...



The Effect of Inclination Angle of The Solar Panel on The ...

One renewable energy that is easy to develop is solar power generation. In this study, we will discuss the effect of the tilt angle on the solar panel and the value of the intensity of sunlight on the resulting ...



Contact Us

For catalog requests, pricing, or partnerships, please visit:

<https://id2market.eu>

Phone: +34 910 56 87 45

Email: info@id2market.eu

Scan the QR code to access our WhatsApp.

