



The size of Haier photovoltaic panels





Overview

On average, 60 cell solar panels are 65 inches (1. These specifications directly influence the overall size of the panel. 3?

instal at will fit on your. A common residential solar panel size is approximately 65 inches by 39 inches, and typically has a power output of around 300 watts. Haier solar cell module features superior overall performance, high photovoltaic efficiency and long service life, etc. Open navigation. Efficiency: EVO 6 Series Mono PERC 132 Half Cells 650W 655W 660W 665W 670W Bifacial Dual Glass Solar Module Based on 210mm silicon wafer and 132 half-cut mono-crystalline PERC cell, the Evo 6 Series photovoltaic panels comes with several innovative design features allowing higher output power up to. Nahui Solar Panel, TOPCon, Single Glass Module, 410W Nahui Solar Panel, TOPCon, Single Glass Module, 420W Nahui Solar Panel, TOPCon, Single Glass Module, 430W Nahui Solar Panel, TOPCon, Single Glass Module, 440W Explore Haier Home high-performance residential panels with TOPCon tech, anti-PID, with. Nahui Solar Panel, TOPCon, Single Glass Module, 670W Nahui Solar Panel, TOPCon, Single Glass Module, 680W Nahui Solar Panel, TOPCon, Single Glass Module, 690W Explore Nahui Solar Panel TOPCON tech optimised anti-PID and durability, with 670-700W output.



The size of Haier photovoltaic panels



[Solar Power , New Energy , Solutions , Government Solutions](#)

Each product comes with a built-in battery, and the type of 1800W contains a 60Ah/80Ah battery and an extended battery box. The power station with a capacity of less than 50KW can be off grid.

[Haier photovoltaic panel specifications and dimensions](#)

Using the average solar panel size of 6 feet by 3.25 feet, and assuming you leave minimal space between the panels, your rooftop solar system would measure roughly 4,875 square feet.



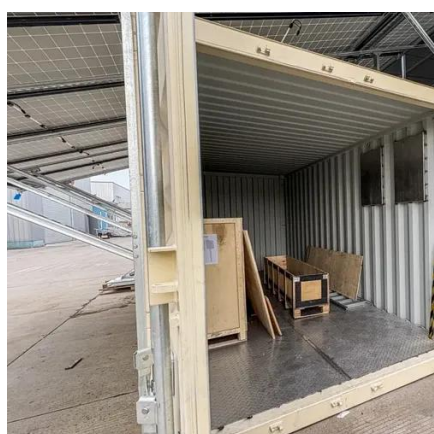
[HAIER PHOTOVOLTAIC PANEL SPECIFICATIONS AND DIMENSIONS](#)

These panels are commonly preferred for large-scale solar PV installations. Such solar panels are used in different sectors such as industrial, commercial, or residential..

[Haier photovoltaic panel specifications and dimensions](#)

When you're looking for the latest and most efficient Haier photovoltaic panel specifications and dimensions for your PV project, our website offers a comprehensive selection of cutting-edge

...



Haier photovoltaic panel specifications and dimensions table

Within the Haier solar suite, a range of products developed by Nahui, a renewable energy platform wholly owned by the Haier Group, offers a fully connected suite of solar inverters,

[Haier photovoltaic panel size specifications](#)

Learning about different solar panel types, like 60-cell, 72-cell, and 96-cell, is key to optimizing solar panel efficiency. When you match the system size with your energy needs and consider the climate, ...



Standard Solar Panel Sizes And Wattages (100W-500W Dimensions)

The goal here is to get to the average solar panel size by wattage. You can find typical dimensions of 100W, 150W, 170W, 200W, 200W, 220W, 300W, 350W, 400W, and 500W solar panels summarized ...

[Haier Home Nahui Solar Panel, 670-700W](#)



[Haier Home](#)

Explore Nahui Solar Panel TOPCON tech optimised anti-PID and durability, with 670-700W output. Learn more.



Nahui Solar Panels, TOPCon, 410W

Explore Haier Home high-performance residential panels with TOPCon tech, anti-PID, with sleek black design. Range from 410-490W output and enhanced efficiency. Learn more.

[Solar Panel Size & Dimensions Guide 2025](#) [Complete Specs](#)

In this comprehensive guide, you'll learn everything you need to know about solar panel sizing, from standard dimensions to weight considerations, helping you determine the perfect solar ...





Contact Us

For catalog requests, pricing, or partnerships, please visit:

<https://id2market.eu>

Phone: +34 910 56 87 45

Email: info@id2market.eu

Scan the QR code to access our WhatsApp.

