



# The size of solar panels over 200 watts





## Overview

---

Most 200-watt solar panels on the market today measure roughly 3. Thickness is usually around 1 to 1. There are 3 standardized sizes of solar panels, namely: 60-cell solar panels size. 72-cell solar panel. In this article, we will delve into the physical size of a 200 watt solar panel, typically ranging from 3 to 4 feet in length and 2 to 3 feet in width.



## The size of solar panels over 200 watts

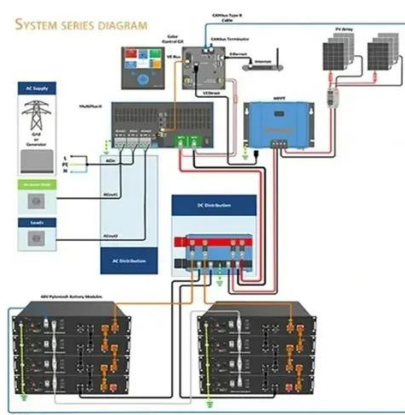


### Solar Panel Sizes: Choosing the Right Dimensions for Any Project

Solar panel "size" actually refers to two key measurements: These two factors work together to determine your system's efficiency, cost, and performance. The trick is finding the right ...

### Standard Solar Panel Sizes And Wattages (100W-500W Dimensions)

To bridge that gap of very useful knowledge needed, we have compared and averaged the sizes of 100-watt to 500-watt solar panels available on the market. The goal here is to get to the average solar ...



### Solar Panel Size and Wattage Chart: Standard Sizes & Uses for Each

Using a solar panel size chart can help you choose the best types of solar panels for your home or application. Because the size of a standard solar panel can vary, a chart that outlines the ...



### [Solar Panel Sizes and Wattage Explained](#)

To calculate the required system size, multiply the number of panels by the output. For example, a 6.6 kW solar system typically consists of 20 panels each delivering 330W of power. Solar ...



## All You Need to Know About 200w Solar Panels

Among various options available, 200W solar panels strike a perfect balance between power output and practicality. These mid-sized panels offer enough energy to power essential ...

## How big is a 200W solar panel?

Most 200-watt solar panels on the market today measure roughly 3.5 to 4 feet long by 2 to 2.5 feet wide. Thickness is usually around 1 to 1.5 inches.

TAX FREE    

### ENERGY STORAGE SYSTEM

**Product Model**  
HJ-ESS-215A(100KW/215KWh)  
HJ-ESS-115A(50KW 115KWh)

**Dimensions**  
1600\*1280\*2200mm  
1600\*1200\*2000mm

**Rated Battery Capacity**  
215KWH/115KWH

**Battery Cooling Method**  
Air Cooled/Liquid Cooled




## How Big is a 200 Watt Solar Panel? Dimensions and Benefits

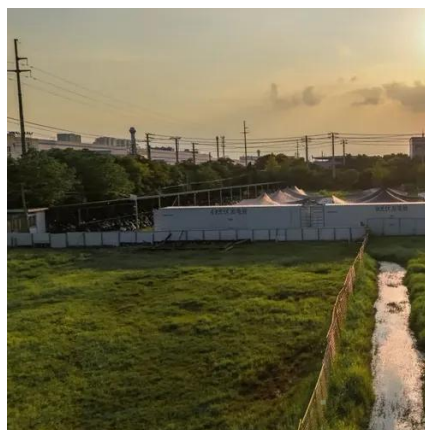
In this article, we will delve into the physical size of a 200 watt solar panel, typically ranging from 3 to 4 feet in length and 2 to 3 feet in width. We will explore how these dimensions ...

## 200W Solar Panel Complete Guide



## 2025: Performance & Best Brands

Complete 200W solar panel guide covering real performance, installation, best brands, and system requirements. Expert tested with actual data for 2025.



## 200W Solar Panel Guide (2025): Real Output, What It Runs, Charge ...

Two beats one: 2x200W meaningfully extends runtimes and speeds charging--size MPPT (Voc/Isc) and wiring accordingly. Want numbers for your area? Get a quick custom solar estimate for your location ...

### [How Big Is A 200 Watt Solar Panel? \[Updated: October 2025\]](#)

So, how big is a 200 watt solar panel? The average 200 watt solar panel has dimensions of 61.73 x 26.64 x 1.39 inches (5.1ft x 2.2ft x 1.39 inches). However, the thickness of the panel can vary ...





## Contact Us

---

For catalog requests, pricing, or partnerships, please visit:

<https://id2market.eu>

Phone: +34 910 56 87 45

Email: [info@id2market.eu](mailto:info@id2market.eu)

Scan the QR code to access our WhatsApp.

