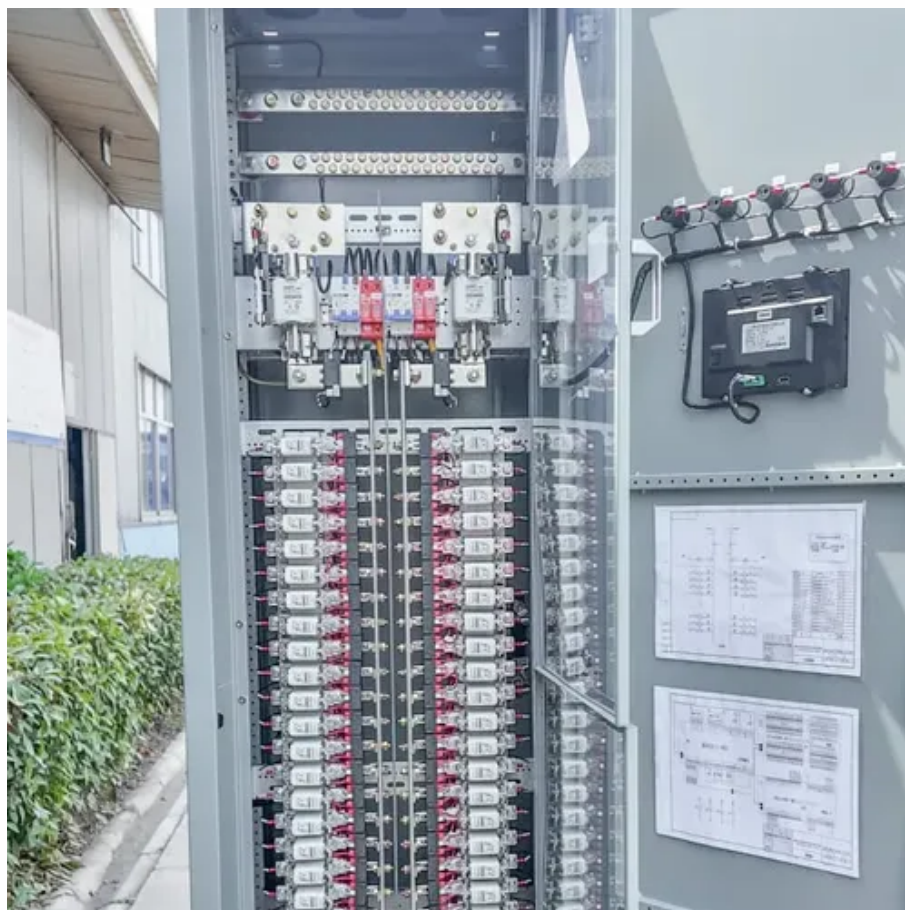




The solar container communication station loses power and has no signal source





Overview

If you think you have no signal because of your ethernet port or cable, this is an obvious and simple fix: just try a new ethernet port or change out your current ethernet cord for a new one. Similarly, if your issue is your power source, try using a different, fully. When communication issues occur, you lose visibility into how well your system is performing. This not only leaves you in the dark about your energy savings but can also delay the discovery of real performance problems, such as faulty panels or inverter failures. Left unchecked, communication. This guide explains how to identify and troubleshoot non-functional Power Optimizers and Strings. The following troubleshooting steps require you to work inside the inverter. I have to power cycle the SA device to get it to reconnect.



The solar container communication station loses power and has no signal



[Troubleshooting Tesla Solar "No Signal" Problems](#)

Getting a "no signal" alert on your Gateway is not fun, but no worries because it is generally an easy fix, like checking your ethernet port or cable, your power source, or the proximity of your inverter to your ...

Enphase IQ Combiner Has No Power - A Service Call for a Blown Fuse

Recently, I was called out to a service call for a customer who reported that their Enphase IQ Gateway had lost power. This type of issue can be concerning for solar system owners because ...



Troubleshooting

A blinking green, red, or no light on the production led indicator means that there is currently no energy being produced. The blue communication light may be blinking or red if the signal is not reliable.



The signal near the solar container communication station is not ...

For the receive earth station, this once-a-day natural phenomenon of additional solar thermal noise is noticed as a source of interference, which causes signal degradation (interference causing lower link ...

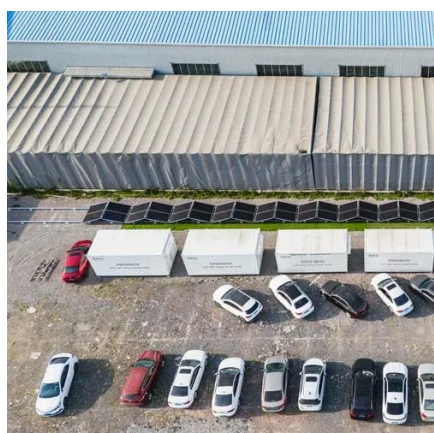


[Troubleshooting Communication Issues in Solar Systems](#)

Learn troubleshooting methods for solar system communication issues with data analytics and expert insights.

[Lost communication with Solar Assistant](#)

I bought an Orange Pi with Solar Assistant about a month ago. It's been working but today I can't reach it. I'm away from home so I can't physically check



What to prepare for when a solar container communication station ...

If you have a traditional landline (non-broadband or VOIP) phone, keep at least one non-cordless receiver in your home because it will work even if you lose power.

Solar Keeps Losing Connection



This blog breaks down every reason your solar system loses connection to the app, how to separate harmless issues from serious ones, and how Texas homeowners can fix monitoring problems for good.

System Topology



Power Optimizer and String Troubleshooting Guide - North America

If Power Optimizers have not communicated with the Monitoring portal for a 24-hour period, a No Communication alert is triggered for each optimizer that stopped communicating.

[Solar Communication Issues & Troubleshooting](#)

Solar communication is vital to solar production and savings. Learn the top solar communication issues and troubleshooting steps to take.





Contact Us

For catalog requests, pricing, or partnerships, please visit:

<https://id2market.eu>

Phone: +34 910 56 87 45

Email: info@id2market.eu

Scan the QR code to access our WhatsApp.

