



# The taller the photovoltaic panels the better





## Overview

---

The vertical placement of solar panels influences several key performance and safety aspects. Taller mounting can improve sun exposure by avoiding shade from nearby structures, but can also increase wind loads and installation complexity. While extreme height isn't practical, the question remains: does elevating photovoltaic panels improve performance?

Let's cut through the hype and examine the real factors influencing installation height HOME / Is Higher Better?

The Truth About Photovoltaic Panel Installation Heights Is Higher. Solar energy is the most cost-effective and long-term solution for lowering our electricity bills and carbon footprint among all renewable energy sources. This article covers clearance recommendations, mounting methods, wind and snow considerations, and practical installation steps to help homeowners and installers make. Solar panel mounting height refers to the vertical distance between the ground (or the mounting surface) and the lowest edge of the solar panels in a ground-mounted or elevated solar array.



## The taller the photovoltaic panels the better

---



### [standard solar photovoltaic panel sizes explained](#)

Absolutely--commercial and utility projects often use larger 72-cell or 96-cell solar photovoltaic panel sizes, which can be 78 inches or longer. Since commercial roofs and ground ...

### **Optimal Panel Height for Maximum Crop Yield: Latest Research Findings**

Research conducted by the National Renewable Energy Laboratory (NREL) in partnership with universities and agrivoltaic farms has identified a range of ideal panel heights: 2.5 to ...

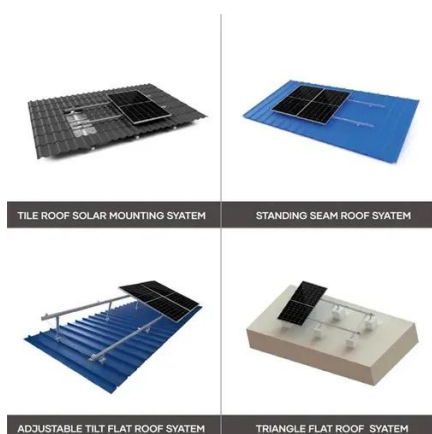


### [Solar Panel Size & Dimensions Guide 2025](#) [. Complete Specs](#)

In this comprehensive guide, you'll learn everything you need to know about solar panel sizing, from standard dimensions to weight considerations, helping you determine the perfect solar ...

### **High-Rise Solar Module Mounting Structure , Benefits & Types**

Solar panels are placed at a height of 6 to 8 feet above ground level. With a solar pergola design, the solar panel can be readily installed, and the extra benefits of providing outdoor power to ...



### What Is the Average Height of Ground Mounted Solar Panels?

Panels installed at an optimal height can maximize exposure to the sun, thereby increasing energy production. By positioning the panels at a height that allows for an unobstructed ...

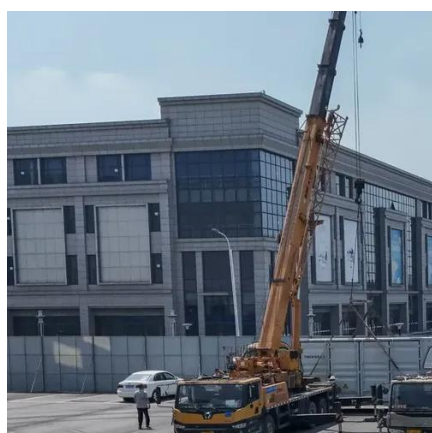
### Solar panel mounting height , Solamp Solar & Energy Storage

Solar panel mounting height refers to the vertical distance between the ground (or the mounting surface) and the lowest edge of the solar panels in a ground-mounted or elevated solar ...



### **Solar Panel Height Above Roof: Optimal Clearance and Installation**

Several variables guide the ideal solar panel height above roof: roof type, local climate, wind exposure, desired tilt angle, and maintenance needs. Each project must balance these factors ...

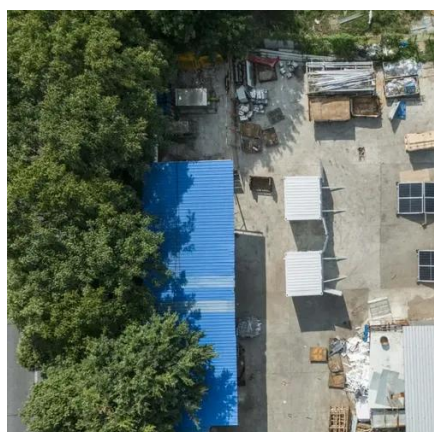


### **Increased panel height enhances**



## cooling for photovoltaic solar farms

Solar photovoltaic (PV) systems suffer substantial efficiency loss due to environmental and internal heating. However, increasing the canopy height of these systems promotes surface heat ...



## Is Higher Better? The Truth About Photovoltaic Panel Installation

While extreme height isn't practical, the question remains: does elevating photovoltaic panels improve performance? Let's cut through the hype and examine the real factors influencing installation height.

## Optimal Solar Panel Height Above Roof for Efficiency and Safety

The vertical placement of solar panels influences several key performance and safety aspects. Taller mounting can improve sun exposure by avoiding shade from nearby structures, but ...





## Contact Us

---

For catalog requests, pricing, or partnerships, please visit:

<https://id2market.eu>

Phone: +34 910 56 87 45

Email: [info@id2market.eu](mailto:info@id2market.eu)

Scan the QR code to access our WhatsApp.

