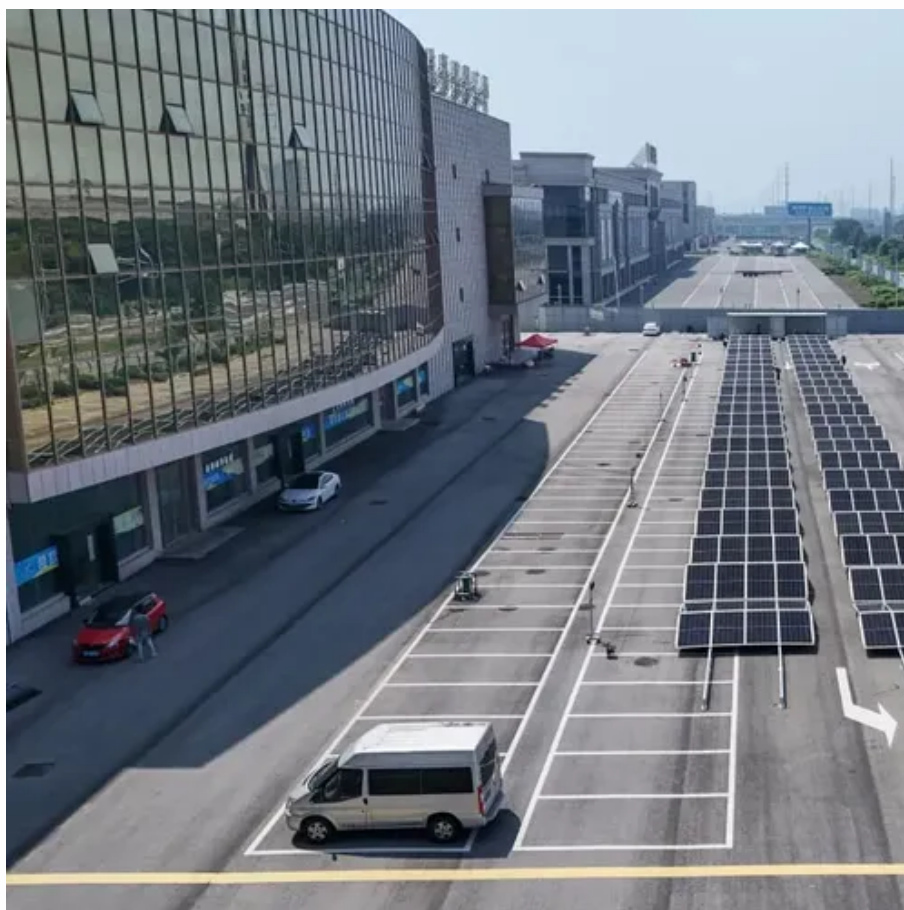




UPS battery cabinet ground discharge principle





Overview

A battery ground fault occurs when an undesired conductive path develops from any point on the DC circuit to ground. (see figure below) This happens most often with rack-mounted wet cell batteries, where leaked or spilled electrolyte forms a conductive path from a battery terminal to. Rectifier/charger - Converts alternating current (ac) into direct current (dc) used to maintain the battery at a constant state of charge. Stores energy; includes multiple 2. Inverter - Converts dc back into ac for. The UPS System operates with mains, battery or bypass power. It contains components that carry high currents and voltages. The properly installed UPS System is grounded to earth and NEMA-1 rated against electrical shock and foreign objects. COMMISSIONING AND OPERATIONS INSIDE THE UPS MUST BE. A grounding system allows circuit protection to clear a ground fault, and provides paths for diverting surge current away from the UPS and for removing undesirable currents from the critical load. Is that correct?

This is something we'll look into further in this piece.



UPS battery cabinet ground discharge principle



[Galaxy VS UPS Systems Earthing Principles](#)

The following is based on the standards given in IEC 60364 and relates to the installation and earthing principles of the UPS systems from Schneider Electric. According to the standards given in IEC ...

Eaton UPS fundamentals handbook

Positive grid corrosion has been the most common end-of-life factor for UPS batteries, which is a result of the normal aging process due to UPS battery chemistry and involves the gradual breakdown of the ...



[Understanding Neutral Earthing in UPS Systems](#)

Many people are perplexed by the UPS's body earthing and neutral requirements. According to some experts, the UPS neutral requires a separate earthing connection. Is that correct? This is something ...

[STATIC UNINTERRUPTIBLE POWER SUPPLIES TECHNICAL](#)

This type of UPS has an automatic bypass that guarantees power to the load by switching it directly on input in the event of overloads and any internal issues .



UNDERSTANDING UPS SYSTEMS AND BATTERIES

On battery cabinets, the disconnect switch should be mounted in the door to allow the battery to be disconnected from the UPS before the door is opened. This best practice is intended to protect a ...



DESIGN FOR SAFE AND RELIABLE ELECTRICAL ...

The faults considered in this document are related to the DC path (positive and negative connections) between the battery cabinet/rack and the UPS. The type of battery used, e.g. lithium or VRLA battery ...



Battery Ground Fault Detection in Transformer-less UPS ...

A single ground fault on a floating battery would provide a ground reference for the UPS system. The ground fault would not conduct much current but would cause the battery voltage to be unbalanced ...



Connecting UPS Grounds and Neutrals .



EC& M

For multiple battery cabinets incorporating battery disconnects, the cabinets are bolted together, forming a single lineup with the UPS. The cabinet grounds are inherently connected to the UPS ground bus ...



System earthing arrangements for installations comprising UPSs

When batteries are not installed in a cabinet, i.e. generally in a special room, the measures presented at the end of this chapter should be implemented. Note: The TN system ...

DPA 60 and 120 UPS

The UPS system and the battery cabinet operates with mains, batteries or bypass power that carry high currents and voltages. The properly installed UPS system and battery cabinet is grounded to earth ...





Contact Us

For catalog requests, pricing, or partnerships, please visit:

<https://id2market.eu>

Phone: +34 910 56 87 45

Email: info@id2market.eu

Scan the QR code to access our WhatsApp.

