



Unit weight of rooftop photovoltaic panels





Overview

Most residential PV modules weigh between 40 and 50 pounds (18–23 kg). Typical dimensions are about 65 inches by 39 inches, resulting in roughly 17.5 square feet of panel area per module. Solar panels add valuable energy to homes, but their weight matters for roof integrity. This article explains typical panel weights, how mounting hardware contributes to total mass, and how to assess a roof's ability to safely support a solar installation. It covers estimating dead loads. Standard residential solar panels are typically around 5. Understanding these specifications is crucial for determining roof. The average photovoltaic solar panel weight guide is essential for everyone involved—from the homeowner worried about roof loading to the logistics company planning freight, and the structural engineer signing off on the blueprints. Solar mounting racks, rails, and hardware add.



Unit weight of rooftop photovoltaic panels



Weight Of Solar Panels On Roof: Detailed Guide For Safe Solar

Most homeowners use silicon-based photovoltaic (PV) panels, typically available in 60-cell or 72-cell configurations. A standard 60-cell panel weighs between 35 and 42 lbs (16-19 kg). ...

[Solar Panel Size And Weight: A Comprehensive Guide](#)

Average Residential Panel Weight: Most panels weigh between ****40 and 50 pounds****. The "Bridge" (Total Roof Load): A standard 20-panel residential ...



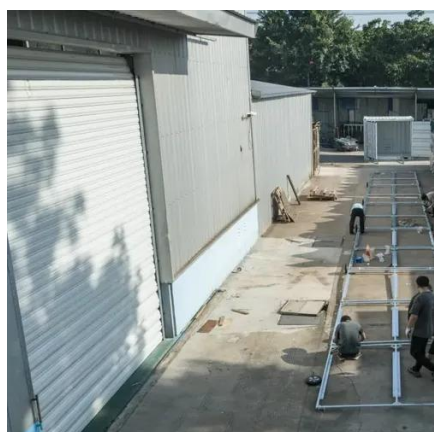
The Ultimate Guide to Solar Panel Size, Weight & Wattage (2025)

Find the exact solar panel size & weight in our 2025 guide. Our complete chart compares models by ft/cm and lbs/kg to help you plan your installation.



[average photovoltaic solar panel weight guide](#)

Generally, standard residential photovoltaic panels weigh between 40 and 50 pounds (about 18 to 22 kilograms). This weight makes them manageable, but still requires careful lifting ...

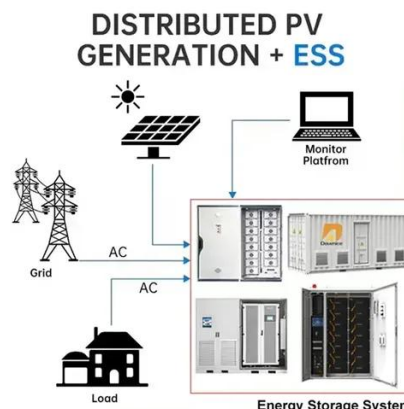


[Solar Panel Weight Guide - Solar Generation USA](#)

A typical residential solar installation with about 15-20 panels can weigh 300 to 450 kilograms (660 to 990 pounds) in total, which adds approximately 10 to 20 kilograms per square meter (2 to 4 pounds ...

Weight of Solar Panels on Roof: Understanding Mass, Roof Load, and

Most residential PV modules weigh between 40 and 50 pounds (18-23 kg). Typical dimensions are about 65 inches by 39 inches, resulting in roughly 17.5 square feet of panel area per ...



[Solar Panel Size And Weight: A Comprehensive Guide](#)

When considering residential solar panels, typical configurations consist of 60 cells measuring approximately 3.25 feet by 5.5 feet. These panels cover an area of 17.62 square feet and weigh



**2MW / 5MWh
Customizable**

[How Much Do Solar Panels Weigh? 1.30 -](#)



2,608.7 lbs Chart

All individual solar panels weigh less than 100 lbs. However, solar systems with 8kW rated capacity and above add more than 1,000 lbs to your roof. Not to worry, however.



Solar Panel Size and Weight: A 2025 Guide (with Examples)

Average Residential Panel Weight: Most panels weigh between ****40 and 50 pounds****. The "Bridge" (Total Roof Load): A standard 20-panel residential system will add ****800 to 1,000 pounds**** of static ...

Weight of Solar Panels on Roof: Understanding Panel and System Load

The weight of solar panels on roof depends on panel size, frame material, and mounting hardware, while the total system load also includes racking, ballast, and connections.



Solar Panel Weight Guide

Learn the average weight stats for both home and business solar panels, as well as some FAQs about solar panels' weight.



Contact Us

For catalog requests, pricing, or partnerships, please visit:

<https://id2market.eu>

Phone: +34 910 56 87 45

Email: info@id2market.eu

Scan the QR code to access our WhatsApp.

