

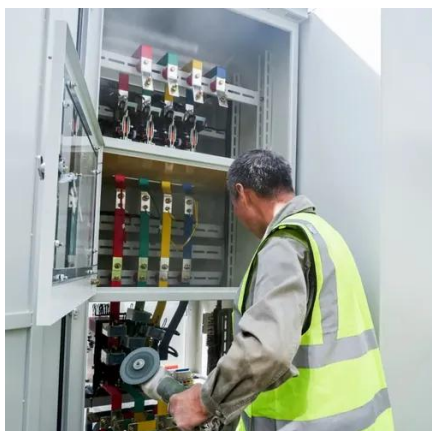


Voltage 220v inverter 380v





Voltage 220v inverter 380v



Three Phase Inverter

Higher power capability: These inverters can handle higher power loads, making them suitable for heavy-duty industrial machinery and large-scale renewable energy installations.

[AU400 Boost inverters 220V input 380V output](#)

AU400 series 220V to 380V frequency converters are specially developed by us for occasions where three-phase power is lacking. With multiple protection methods and excellent driving performance, ...



Key differences between three-phase 220V and three-phase 380V inverters

In this paper, we will discuss the nine core differences between three-phase 220V and three-phase 380V inverters, to help readers more fully understand the application characteristics of ...

How to setup the 3 Phase 380VAC output with Shiningintl inverter ...

To generate a 3-phase 380V AC output using three 220V single-phase inverters with a 120° phase shift, follow these steps:



[Anchuan 220V Single Phase To 380V Three Phase Converter](#)

Unleash the Power of Your Single Phase Motor with our 220V to 380V 3 Phase Converter! Upgrade to a Single Phase VFD and experience a whole new level of efficiency and performance.



How to Choose the Best Inverter 220V to 380V for Stable Power ...

Learn how to select a reliable inverter 220V to 380V with key specs, safety tips, and buyer insights for industrial or home use.



[Difference Between 220V & 380V 3-Phase Power Supplies](#)

Understanding the difference between 220V and 380V three-phase power supplies, including how inverters handle these voltage levels. Learn about voltage between phase and zero, ...

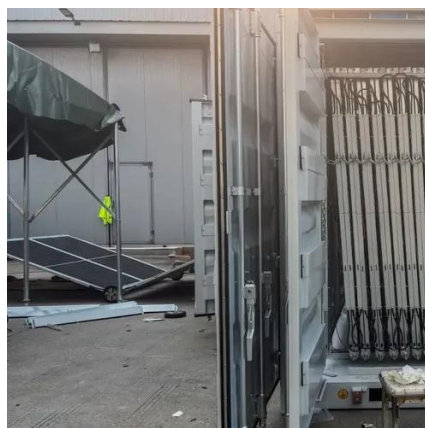


The difference between three-phase



220v and three-phase 380v inverter

In practical applications, the input voltage of the inverter usually has two specifications: three-phase 220V and three-phase 380V. This article will analyze the differences between these two inverters in ...



VFD Inverter 750W 1500W 2200W 220V in and 380V Out Single ...

VFD Inverter 750W 1500W 2200W 220V in and 380V Out Single Phase 220V Input and Three-Phase 380V Output (1Phase 220V Input 3Phase 380V Output) (220V to 380V 0.75KW)

How to get 380 Volts from 220

To make 380 volts out of 220 volts, you need a three-phase transformer of the required power for the voltage of one of the windings 220, and the other 380 V. Most often, they already have windings ...





Contact Us

For catalog requests, pricing, or partnerships, please visit:

<https://id2market.eu>

Phone: +34 910 56 87 45

Email: info@id2market.eu

Scan the QR code to access our WhatsApp.

