

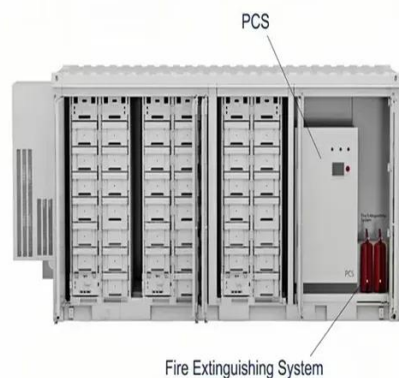


# What appliances can be used with a 12 volt inverter





## What appliances can be used with a 12 volt inverter



### [Can I Cook with Electric Appliances Using An Inverter?](#)

You can cook with electric appliances using an inverter, but it's important to consider the power requirements of the appliance and the capacity of your inverter; high-power appliances like ...

### **Can a 12V Inverter Run a TV, Fridge, or Other Household Devices?**

A 12V inverter takes low-voltage DC current from a car battery, solar battery, or portable power station and converts it into household-level AC electricity. The inverter's internal circuitry ...



### [1000-Watt Inverters: List of Devices You Can Run](#)

This guide is for you if you have purchased the 1000-watt inverter recently but don't know about the list of devices you can run. We have discussed it. Read on!

### [What Appliances Can You Run on a 12V Battery?](#)

2. Electronics Laptops and Tablets: Use a 12V inverter to power your devices from the battery.  
Small Appliances: Many small appliances, such as fans, blenders, and coffee makers, can ...



## Do I Need an Inverter for a 12V Battery? Running Appliances ...

For low-power devices, consider using 12V sockets. This setup ensures effective voltage conversion and runtime. Using an inverter makes running appliances easier by allowing you to use ...

## What Can You Run Off A 12V Inverter?

Keep an eye on the inverter's power rating, and don't overload it with more power-hungry appliances than it can handle. Choose the 12 volt battery supply When selecting a 12V power supply, ...



## What appliances can I use on a 1000W power inverter?

3. The time a 12-volt battery runs a 1000-watt power inverter depends on battery capacity, inverter efficiency, depth of discharge, battery type, and actual use environment. Battery life and operating ...



## What Appliances can run on a Power



## inverter? , Knowledge ...

Most power inverters require a 12-volt DC input, which is the standard for car starter batteries. However, you can run an inverter from higher voltages, and use 24V or even 48V battery ...

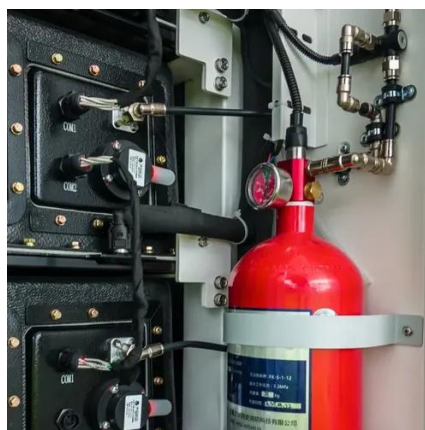


## ? Appliances You Can and Cannot Use with an Inverter - A Guide

Inverters have become a household essential for managing power outages and running appliances during blackouts. But not all appliances are suitable for inverter use--especially if you're ...

### [What Is A 12V Inverter And Where Is It Used?](#)

A 12V inverter is a device that converts 12V DC power from batteries or solar panels into 120V/230V AC electricity, enabling the use of household appliances in off-grid or mobile setups. Commonly used in ...





## Contact Us

---

For catalog requests, pricing, or partnerships, please visit:

<https://id2market.eu>

Phone: +34 910 56 87 45

Email: [info@id2market.eu](mailto:info@id2market.eu)

Scan the QR code to access our WhatsApp.

