



What are the communication base stations introduced by foreign power





Overview

Base stations are required to enable mobile phone communication, including calls and data transfer. They consist of different electronic components and antennas and can be located on masts, on rooftops, or on the outside or inside of buildings. " A base station is called node B in 3G, eNB in LTE (4G), and gNB in 5G. The term is used in the context of mobile. The idea of base stations is anchored in their function to provide coverage, capacity, and connectivity, hence allowing for extending the working capabilities of mobile phones and other radio gear. The Role of Hybrid Energy Systems in Powering.



What are the communication base stations introduced by foreign power

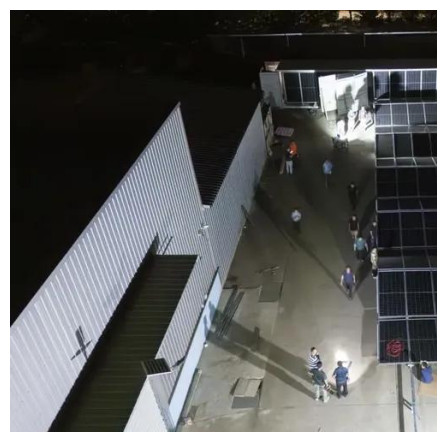


What are the wind and solar complementary technologies for ...

The wind-solar-diesel hybrid power supply system of the communication base station is composed of a wind turbine, a solar cell module, an integrated controller for hybrid energy

Base Stations and Cell Towers: The Pillars of Mobile Connectivity

Base stations use antennas mounted on cell towers to send and receive radio signals to and from mobile devices within their coverage area. This communication enables users to make ...



Basestation

As part of the network infrastructure, the base station is linked up with other network components via well defined interfaces. When tests are carried out using a simulated mobile station, it is assumed ...

Base Stations

The present-day tele-space is incomplete without the base stations as these constitute an important part of the modern-day scheme of wireless communications. They are referred to as cell ...

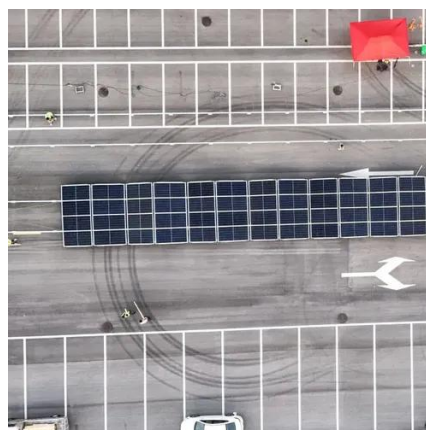


ICNIRP , Base Stations

Base stations are required to enable mobile phone communication, including calls and data transfer. They consist of different electronic components and antennas and can be located on masts, on ...

What Is A Base Station?

Base stations play a central role in two-way radio systems, such as citizens band (CB) radio and ham radio. In these setups, the base station serves as a fixed point of communication, ...



The Base Station in Wireless Communications: The Key to Modern

Equipped with an electromagnetic wave antenna, often placed on a tall mast, the base station enables communication between mobile terminals (such as mobile phones or pagers) and the ...

Base station



In traditional wireless communications, it can refer to the hub of a dispatch fleet such as a taxi or delivery fleet, the base of a TETRA network as used by government and emergency services or a CB shack.



Power Base Station

Maximum base station power is limited to 38 dBm output power for Medium-Range base stations, 24 dBm output power for Local Area base stations, and to 20 dBm for Home base stations.

Types of Base Stations

Macro-base stations are tall towers ranging from 50 to 200 feet in height, placed at strategic locations to provide maximum coverage in a given area. Those are equipped with large ...





Contact Us

For catalog requests, pricing, or partnerships, please visit:

<https://id2market.eu>

Phone: +34 910 56 87 45

Email: info@id2market.eu

Scan the QR code to access our WhatsApp.

