



# What are the weak current outdoor power supplies





## Overview

---

These specialized devices are designed to deliver stable energy while keeping out moisture, dust, and dirt. They're perfect for use in places where normal power supplies would fail—like near water, in gardens, or in industrial settings. In the field of electrical engineering, “strong current” and “weak current” are two fundamental concepts. Let's take a closer look at how they. In the sections below, we will discuss common outdoor power solution features, current market trends, common outdoor power applications, and – most importantly – offer tips on how to choose the right outdoor power and charging solution for your unique facility needs. Extension cords, in most instances, simply fall short of safety or performance requirements. COOLM has revolutionized outdoor power distribution through innovative waterproof designs that maintain consistent performance. Meanwell 24V outdoor power supplies for waterproof low voltage DC24V LED lighting projects. Available in Mean Well LPH 18W series, LPV 20W-150W series, XLG 50W-200W series, and HLG 480W-600W series. In this article, we'll dive into what makes waterproof power.



## What are the weak current outdoor power supplies



### [Outdoor Harsh Environment and High-Power Power Supply ...](#)

The HEP-2300 is completely perfect for systems that operate outdoors and require a power of more than 2000 watts. The series includes four different output voltages, 55V/115V/230V, ...

### Understanding Strong Current (Power) and Weak Current (Signal) ...

Weak Current (Signal): Weak current systems operate at low voltage and low current levels, typically below 36V. Common voltages in weak current systems include 5V, 12V, and 24V, often found in ...



### [Meanwell 24V DC Outdoor LED Power Supplies](#)

Meanwell 24V outdoor power supplies for waterproof low voltage DC24V LED lighting projects. Available in Mean Well LPH series, LPV series, XLG series, and HLG series.

### Outdoor Power Supply in Weak Current Box Installation Tips Industry

Summary: Discover best practices for installing outdoor power supplies in weak current boxes, including safety guidelines, industry trends, and real-world applications. Learn how this solution



bridges ...



### [Ultimate Guide to Outdoor Power Strips: Buyer's Tips](#)

Discover the benefits, features, and safety tips of using outdoor power strips for reliable, safe power in any outdoor setup.



**LPR Series 19'  
Rack Mounted**

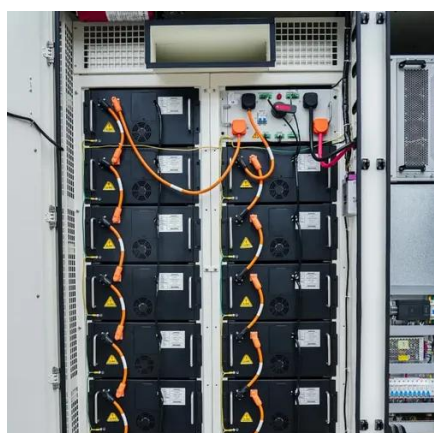
### **The weak current box is connected to the outdoor power supply**

Weak current system engineering mainly refers to communication automation (CA), building automation (BA), office automation (OA), fire automation (FA) and security automation (SA), referred to as 5A.



### **Waterproof Power Supply for Outdoor and Harsh Environments: Key**

Discover the essentials of waterproof power supplies designed for outdoor and harsh environments. Learn how they differ from regular power supplies, key features to look for, and why they're crucial for ...





## Bringing The Indoors Out: The Ultimate Guide to Outdoor Power and

Your outdoor power solution needs to be able to survive the harsh outdoor elements, including rain, snow, extreme temperatures, and harsh UV exposure. The power solution should be constructed ...



### [Outdoor power supply access to weak current box](#)

Summary: Discover best practices for installing outdoor power supplies in weak current boxes, including safety guidelines, industry trends, and real-world applications.

### [COOLM Outdoor Power: Ultimate Waterproof Supply Guide](#)

The COOLM 12V 3.5A Power Supply Adapter specifically addresses outdoor networking requirements through 42W power delivery with comprehensive protection features.





## Contact Us

---

For catalog requests, pricing, or partnerships, please visit:

<https://id2market.eu>

Phone: +34 910 56 87 45

Email: [info@id2market.eu](mailto:info@id2market.eu)

Scan the QR code to access our WhatsApp.

