



What does the wind-solar hybrid system for communication base stations include





Overview

Our company's wind-solar hybrid power supply system for communication base stations consists of the FD series wind turbines, solar cell modules, an integrated communication power management system, battery packs, and outdoor thermal insulation battery enclosures. Enter hybrid energy systems—solutions that blend renewable energy with traditional sources to offer robust, cost-effective power. So, how exactly are hybrid systems revolutionizing energy for telecom infrastructure?

What Are Hybrid Energy Systems?

A hybrid energy system integrates multiple energy. Indoor Photovoltaic Energy Cabinet is an integrated device of photovoltaic power generation system installed in the communication base station room. It converts the direct current.



What does the wind-solar hybrid system for communication base station



Operation principle of wind-solar hybrid communication base station

Jun 23, 2025 · The selection of wind-solar hybrid systems for communication base stations is essentially to find the optimal solution among reliability, cost and environmental protection.

WIND SOLAR HYBRID POWER TECHNOLOGY FOR COMMUNICATION BASE ...

As a telecommunication management system, BMS ensures stable and continuous power supply for base stations during high-load operations by precisely managing battery status, providing a reliable ...



Do you know these key points about the wind-solar hybrid power ...

Our company's wind-solar hybrid power supply system for communication base stations consists of the FD series wind turbines, solar cell modules, an integrated communication power management ...

The Role of Hybrid Energy Systems in Powering Telecom Base Stations

Hybrid energy solutions enable telecom base stations to run primarily on renewable energy sources, like solar and wind, with the diesel generator as a last resort. This reduces ...



Solar-Wind Hybrid Power for Base Stations: Why It's Preferred

The selection of wind-solar hybrid systems for communication base stations is essentially to find the optimal solution among reliability, cost and environmental protection.



Building wind and solar hybrid power for communication base ...

Should solar and wind energy systems be integrated? Despite the individual merits of solar and wind energy systems, their intermittent nature and geographical limitations have spurred interest in hybrid ...



Wind and solar hybrid installation of communication base stations

The wind-solar-diesel hybrid power supply system of the communication base station is composed of a wind turbine, a solar cell module, an integrated controller for hybrid energy

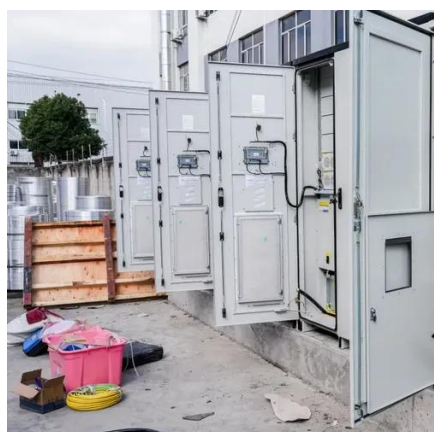


[How to make wind solar hybrid systems](#)



for telecom stations?

Wind & solar hybrid power generation consists of wind turbines, controllers, inverters, photovoltaic arrays (solar panels), battery packs (lithium batteries or gel batteries), DC and AC loads, etc.



Wind-solar hybrid for outdoor communication base stations

Integrated Solar-Wind Power Container for Communications This large-capacity, modular outdoor base station seamlessly integrates photovoltaic, wind power, and energy storage to provide a stable ...

Communication base station wind and solar hybrid site cabinet

The wind-solar-diesel hybrid power supply system of the communication base station is composed of a wind turbine, a solar cell module, an integrated controller for hybrid energy





Contact Us

For catalog requests, pricing, or partnerships, please visit:

<https://id2market.eu>

Phone: +34 910 56 87 45

Email: info@id2market.eu

Scan the QR code to access our WhatsApp.

