



What happens if the solar inverter is over-allocated





Overview

Overloading a solar inverter with excessive panels can lead to various issues, including decreased efficiency, potential damage to the inverter, and safety hazards due to overheating. They often don't realize they're overloading the inverter. And guess what?

This can cause breakdowns. It can also lead to power cuts, damage your equipment, and sometimes even create serious safety risks. If we understand direct impact of an overload on the solar. An inverter AC overload occurs when the power on the AC output exceeds the inverter's nominal power to supply electricity. While it might seem like a “safer” choice, improper sizing leads to hidden pitfalls. Here's a detailed breakdown of the risks, solutions, and answers to critical questions. In the world of renewable energy, particularly solar power, inverters play a pivotal role in.



What happens if the solar inverter is over-allocated



[What Happens If You Overload an Inverter](#)

Overloading a solar inverter with excessive panels can lead to various issues, including decreased efficiency, potential damage to the inverter, and safety hazards due to overheating.

[Overload A Solar Inverter: Causes And Prevention In 2023](#)

Learn if it's possible to Overload A Solar Inverter. What are the causes, prevention, and how to safeguard your solar setup.



[Inverter Oversizing: Maximize Solar Efficiency and ROI](#)

What happens if you connect too many solar panels to an inverter? If the DC input far exceeds the inverter's capacity, you may experience inverter clipping, overheating, reduced ...

[Mastering Solar Inverter Overloads: Prevention and Solutions](#)

By choosing the appropriate inverter and implementing both preventive measures, and dealing with real-life problems, this article covers all the important points necessary for solar ...

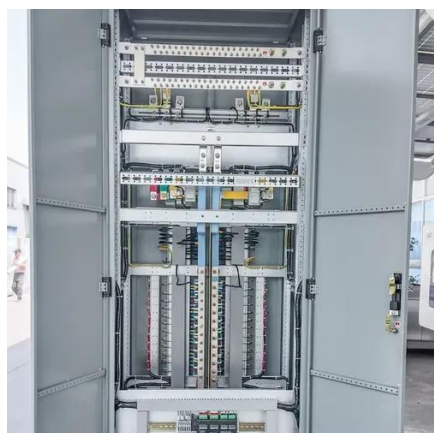


Technical Note: Oversizing of SolarEdge Inverters

Excessive oversizing can negatively affect the inverter's power production. Inverters are designed to generate AC output power up to a defined maximum which cannot be exceeded. The inverter limits ...

What Happens If You Overload Your Inverter? Real Dangers and Fixes

First, we'll talk about what actually happens when your inverter gets overloaded. Then, we'll go over the dangers you need to know about. And most importantly, we'll show you how to fix ...



What Happens If Your Inverter Is Too Big? Risks, Solutions & Expert

Does an oversized inverter damage solar panels? No, but it wastes solar potential. Panels generate DC power, but the inverter's inefficiency at low loads reduces usable AC output.

What Happens If You Overload an



Inverter

Overloading can trigger built-in safety mechanisms, causing the inverter to shut down or trip. This safeguards the inverter from further damage and protects connected devices. Overloading ...



How to Resolve Inverter Capacity Overload and Prevent System Failures

This can lead to inefficiencies, inverter failures, and potential damage to the inverter or other components. In this article, we'll explore how to resolve inverter capacity overload, prevent such ...

What happens if you connect too many solar panels to an inverter

Overloading your solar inverter by connecting too many solar panels can lead to a range of issues that may compromise both your system's efficiency and its longevity. If you exceed the ...



What Happens When Solar Panels Exceed Inverter Capacity

Overloading a solar inverter with excessive panels can lead to various issues, including decreased efficiency, potential damage to the inverter, and safety hazards due to overheating.



Contact Us

For catalog requests, pricing, or partnerships, please visit:

<https://id2market.eu>

Phone: +34 910 56 87 45

Email: info@id2market.eu

Scan the QR code to access our WhatsApp.

