



What is a pumped storage system





Overview

Pumped-storage hydroelectricity (PSH), or pumped hydroelectric energy storage (PHES), is a type of used by for . A PSH system stores energy in the form of of water, pumped from a lower elevation to a higher elevation. Low-cost surplus off-peak electric power is typically used t.



What is a pumped storage system



Pumped storage hydropower plants

Storage hydropower plants, also called pumped storage plants, are facilities that produce electricity by storing water in an upper reservoir, then releasing it and running it through turbines at a lower level, ...

Pumped-storage

Pumped storage dam systems, variants of impoundment dams, release water to generate electricity during periods of high demand and pump water back uphill into the reservoir during periods of low ...



[DOE ESHB Chapter 9: Pumped Hydroelectric Storage](#)

Pumped hydroelectric storage (PHS) is the most widely used electrical energy storage technology in the world today. It can offer a wide range of services to the modern-day power grid, especially assisting ...



Pumped Up: Everything You Need to Know About Hydropower Energy Storage

The World's Largest Battery You've Never Heard Of Hydropower energy storage, or pumped-storage hydropower (PSH), is the world's largest and oldest form of grid-scale energy ...



Pumped-storage hydroelectricity

Ludington Pumped Storage Power Plant in Michigan on Lake Michigan Pumped-storage hydroelectricity (PSH), or pumped hydroelectric energy storage (PHES), is a type of hydroelectric energy storage ...



Pumped storage hydropower guide: Everything about the world's ...

When electricity supply exceeds demand, often due to surplus renewable energy, a pumped storage power plant uses this excess electricity to pump water from the lower reservoir to ...



Pumped storage hydropower: Water batteries for solar and wind

Pumped storage hydropower (PSH) is a form of clean energy storage that is ideal for electricity grid reliability and stability. PSH complements wind and solar by storing the excess electricity they create ...



[What is a pumped storage system? .](#)



NenPower

These systems essentially pump water from a lower reservoir to an upper one during periods of low electricity demand, storing energy as potential energy. When the demand for electricity ...



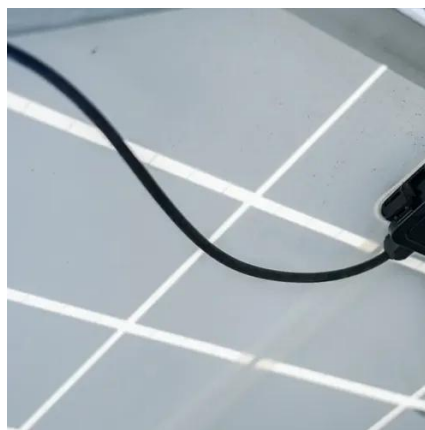
Pumped-storage hydroelectricity

Overview Basic principle Types Economic efficiency Location requirements Environmental impact Potential technologies History

Pumped-storage hydroelectricity (PSH), or pumped hydroelectric energy storage (PHES), is a type of hydroelectric energy storage used by electric power systems for load balancing. A PSH system stores energy in the form of gravitational potential energy of water, pumped from a lower elevation reservoir to a higher elevation. Low-cost surplus off-peak electric power is typically used t...

Pumped Storage

Pumped storage is an essential solution for grid reliability, providing one of the few large-scale, affordable means of storing and deploying electricity. Pumped storage projects store and generate ...



Pumped Storage Hydropower

Pumped storage hydropower (PSH) is a type of hydroelectric energy storage. It is a configuration of two water reservoirs at different elevations that can generate power as water moves down from one to ...



Pumped storage hydropower: Water batteries for solar and wind

The World's Largest Battery You've Never Heard Of Hydropower energy storage, or pumped-storage hydropower (PSH), is the world's largest and oldest form of grid-scale energy ...





Contact Us

For catalog requests, pricing, or partnerships, please visit:

<https://id2market.eu>

Phone: +34 910 56 87 45

Email: info@id2market.eu

Scan the QR code to access our WhatsApp.

