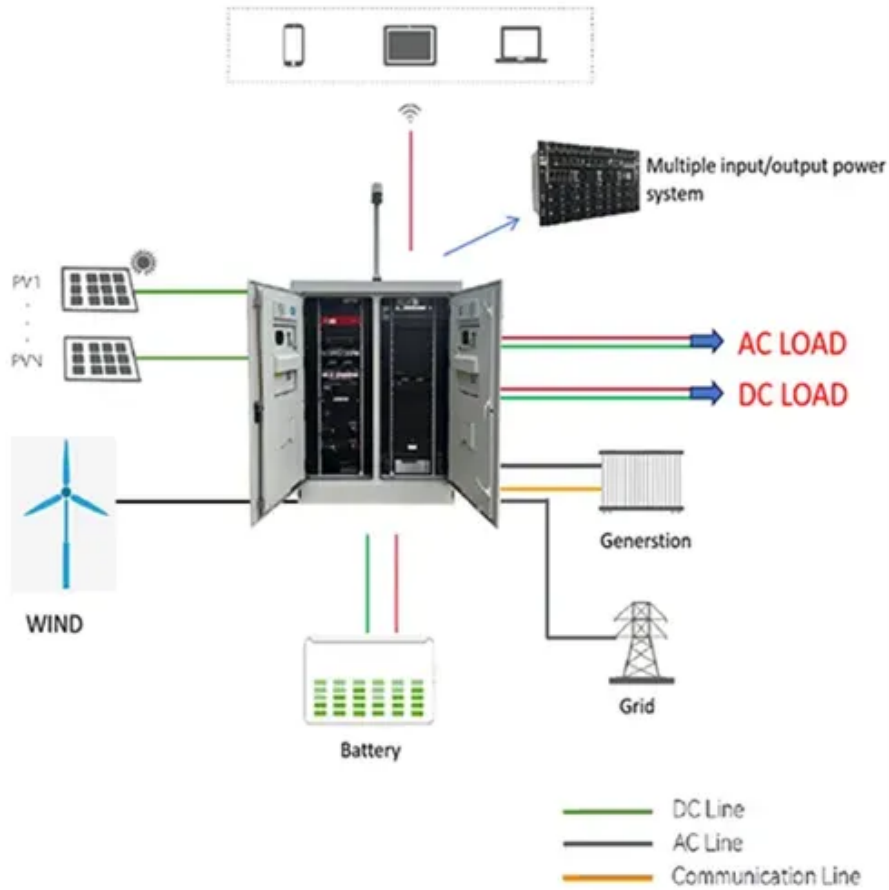




# What is the EMS signal range of the communication base station





## Overview

---

The UHF "Med" channels 1-8 (some regions use different names, such as "Mednet") are used by Emergency Medical Technicians to communicate with the hospital. Information transmitted may be as little as the patient's age, sex, and general condition or as extensive as a full diagnostic. What are the 5 things to do when talking to a patient?

How are digital equipments used in EMS?

What does the FCC regulate?

Don't know?

What is Base Station in EMS?

What is a Land Mobile Radio System?

What is a portable radio?

What is a repeater?

retransmit signals to boost the signal. Located on. These are the original Special Emergency/Emergency Medical radio service frequencies. Except for the medical paging and American Red Cross frequencies, they are now part of the Public Safety Pool and may be used for other public safety purposes. It contains useful information for EMS. Base station: dispatch coordination area. Mobile transmitter / receivers: vehicle-based, long range. Digital. Range is less than 20 miles at a broadcast strength of less than 50 watts.



## What is the EMS signal range of the communication base station



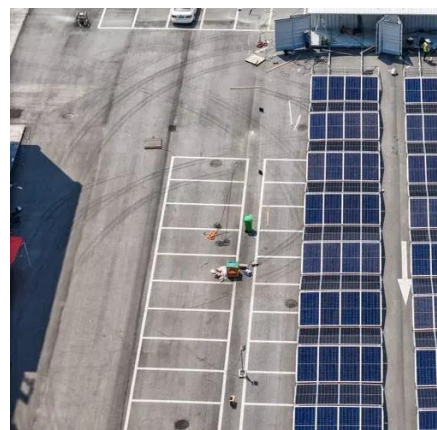
### EMT Review: Communications

Mobile transmitter / receivers: vehicle-based, long range. Portable transmitter / receivers: hand-held, short range. Repeaters: towers that boost the range of transmissions (such as mobile and portable ...

### [Communications and Dispatching . Cooney's EMS Medicine](#)

Describe an emergency department base station and list types of individuals who may be answering the call. Describe the types of "calls" that EMS providers make to the EMS base station.

### ESS



### [EMS System Communications - georgiaemsacademy](#)

The mobile radio is a vehicle mounted device that is designed to transmit with lower power (typically 20 to 50 watts) than the base station radio (due to the 12 volt radio system in the ...

### [Communications-EMT -- Hopper Institute®](#)

It may also convert the signal to a telephone signal and send the communications through public or dedicated telephone lines. EMS radio communication takes place in the VHF low band, VHF high ...



## EMT Review: Communications

Chapter 5 - Communication EMS Communications System Components of an Emergency Communication System Base station Serves as ...



### [Chapter 2: Preparatory Part 2 - Emergency Medical Responder](#)

Mobile Radios: Higher-powered two-way radios typically installed in ambulances, allowing communication with the base station and other units over a range of 10-15 miles.



### [Statewide EMS Operations & Communications Resource Manual](#)

It contains useful information for EMS operations, as well as provides the data necessary to enable radio communications during transport operations within the state.

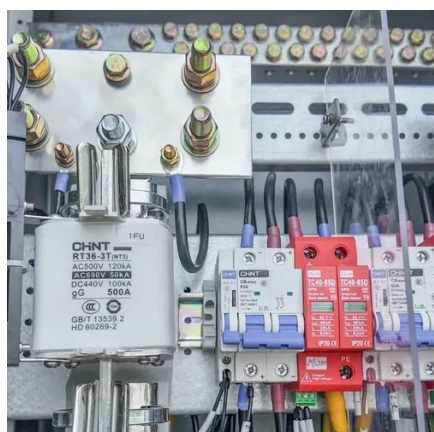


### [Chapter 5: Communication Flashcards .](#)



## Quizlet

Study with Quizlet and memorize flashcards containing terms like What is Base Station in EMS?, What is a Land Mobile Radio System?, What is a portable radio? and more.



## Ch. 5 Notes.pdf

Chapter 5 - Communication EMS Communications System Components of an Emergency Communication System Base station Serves as a dispatch and coordination center High power ...

## Emergency Medical Services Radio

In semi-duplex mode the higher frequency of the pair is usually used by the mobile while the lower frequency is used by the base (usually a hospital). Some EMS systems have the system ...





## Contact Us

---

For catalog requests, pricing, or partnerships, please visit:

<https://id2market.eu>

Phone: +34 910 56 87 45

Email: [info@id2market.eu](mailto:info@id2market.eu)

Scan the QR code to access our WhatsApp.

