



What is the charging voltage of a 24V lithium battery pack





What is the charging voltage of a 24V lithium battery pack



24V Battery Voltage Chart

For instance, a 24V battery system typically operates at 28.8V when fully charged. Understanding this can help you assess the health of your battery. If the voltage drops significantly, it ...

[The Ultimate Guide to Charging 24V Lithium Battery](#)

When learning how to charge a 24 volt battery, the charging voltage and current are critical factors. A proper 24V lithium battery charger should deliver 27-30 volts, with precise control to ...



How to Determine the Best Charging Voltage for a 24V Battery?

What is the optimal charging voltage for a 24V lithium battery? The optimal charging voltage for a 24V lithium battery is generally around 29 volts. This voltage ensures effective charging ...

Understanding the Voltage of a Fully Charged 24V Lithium-Ion Battery

The nominal voltage is about 25.6V, but charging raises the voltage above nominal to around 29.2V for full charge. Proper voltage management is crucial to battery health and optimized ...



System Topology



[Guide to Charging 24V Lithium Battery](#)

As lithium batteries are becoming common due to high energy density and longer working life the proper technique for charging is important for increased efficiency. Here we will discuss the ...



Understanding the Voltage of a 24V Lithium Battery When Fully Charged

A fully charged 24V lithium battery, specifically LiFePO₄ types like DEESPAEK's, will show a voltage around 28.8 to 29.2V. Knowing this helps users verify charge status and maintain ...



Understanding the Voltage Requirements for Charging a 24V Battery

For lithium-ion batteries, the charging voltage should closely match the battery's nominal voltage but not exceed it, typically around 25.2V to 25.9V for a 24V lithium-ion battery.

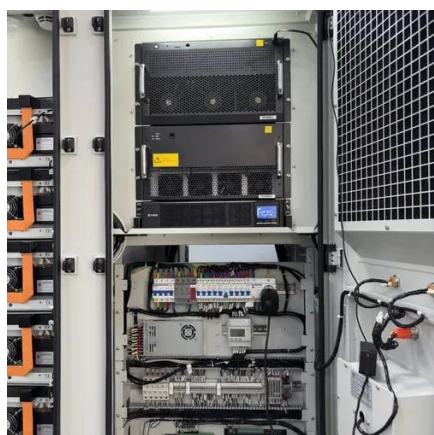


Lithium-Ion Battery Voltage



Breakdown: 12V, 24V, 48V Explained

This guide breaks down what you need to know about lithium-ion battery voltage, from charge levels to real-world applications, helping you make informed energy decisions.



The Ultimate Guide to Charging 24V Lithium Batteries for Beginners

Using a 20-volt charger to charge a 24-volt battery is not recommended. The charger's voltage should match the battery's voltage for safe and efficient charging.

Lithium Battery Voltage Chart

Here's the most commonly used lithium battery voltage chart, specifically for LiFePO4 (Lithium Iron Phosphate) batteries: Always test voltage when the battery is at rest, not during ...





Contact Us

For catalog requests, pricing, or partnerships, please visit:

<https://id2market.eu>

Phone: +34 910 56 87 45

Email: info@id2market.eu

Scan the QR code to access our WhatsApp.

