



What is the device that uses wind to generate electricity called





Overview

Wind turbines work on a simple principle: instead of using electricity to make wind—like a fan—wind turbines use wind to make electricity. Wind turns the propeller-like blades of a turbine around a rotor, which spins a generator, which creates electricity. As of 2020, hundreds of thousands of large turbines, in installations known as wind farms, were generating over 650 gigawatts of power, with 60 GW added each year. They use air currents in order to produce a valuable resource: electricity.



What is the device that uses wind to generate electricity called



Electricity generation from wind

Wind turbines use blades to collect the wind's kinetic energy. Wind flows over the blades creating lift (similar to the effect on airplane wings), which causes the blades to turn.

Wind turbine

OverviewHistoryWind power densityEfficiencyTypesDesign and constructionTechnologyWind turbines on public display

A wind turbine is a device that converts the kinetic energy of wind into electrical energy. As of 2020, hundreds of thousands of large turbines, in installations known as wind farms, were generating over 650 gigawatts of power, with 60 GW added each year. Wind turbines are an increasingly important source of intermittent renewable energy, and are used in many countries to lower energy costs and reduce reliance on fossil fuels. On...



What Is It Called When A Wind Turbine Creates Energy

Wind turbines work on a simple principle: instead of relying on electricity to generate wind, as fans do, they utilize wind to produce electricity. When the wind blows, it spins the blades ...



Wind turbine , Renewable Energy, Efficiency & Design , Britannica

Wind turbines use blades to collect the wind's kinetic energy. Wind flows over the blades creating lift (similar to the effect on airplane wings), which causes the blades to turn.



Wind Energy

Wind energy, or wind power, is created using a wind turbine, a device that channels the power of the wind to generate electricity. The wind blows the blades of the turbine, which are ...

Wind power , Description, Renewable Energy, Uses, Disadvantages

Modern commercial wind turbines produce electricity by using rotational energy to drive an electrical generator. They are made up of one or more blades attached to a rotor and an ...



How does a wind turbine work?

Wind turbines can turn the power of wind into the electricity we all use to power our homes and businesses. They can be stand-alone, supplying just one or a very small number of homes or ...

[Wind turbine: How it works, parts, and](#)



existing types

A wind turbine, also known as a wind generator, is a device that uses the power of the wind to generate electricity. When several wind turbines are grouped together in the same place, a ...

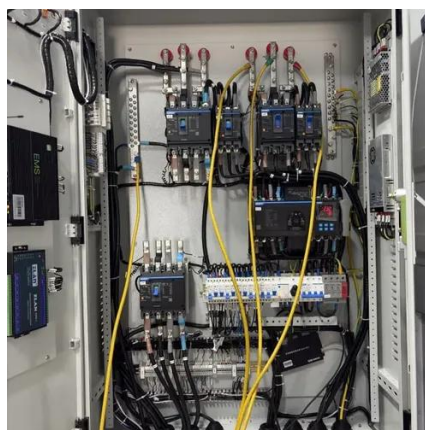


How Do Wind Turbines Work?

How Do Wind Turbines Work? Wind turbines work on a simple principle: instead of using electricity to make wind--like a fan--wind turbines use wind to make electricity. Wind turns the propeller-like ...

Wind turbine: what it is, parts and working . Enel Group

Wind turbines have been called "the windmills of the third millennium". They use air currents in order to produce a valuable resource: electricity. The wind turbine (also known as wind generator or wind ...



Wind turbine , Renewable Energy, Efficiency & Design , Britannica

The term windmill, which typically refers to the conversion of wind energy into power for milling or pumping, is sometimes used to describe a wind turbine. However, the term wind turbine is ...

Wind turbine



Wind turbines are an increasingly important source of intermittent renewable energy, and are used in many countries to lower energy costs and reduce reliance on fossil fuels.





Contact Us

For catalog requests, pricing, or partnerships, please visit:

<https://id2market.eu>

Phone: +34 910 56 87 45

Email: info@id2market.eu

Scan the QR code to access our WhatsApp.

