



# What is the general size of outdoor photovoltaic panels





## Overview

---

With dimensions typically ranging from 60 to 72 cells and common sizes around 65 inches by 39 inches, these measurements play a pivotal role in determining how many panels can fit on a roof and the overall energy output of a solar system.

**Standard Residential Panels Optimize Space and Handling:** The industry-standard 60-cell panel dimensions (65" × 39" × 1.5") aren't arbitrary - they represent the optimal balance between power output, installation ease, and roof space utilization. At 40-46 pounds, they can be safely handled by. There are 3 standardized sizes of solar panels, namely: 60-cell solar panels size. That's basically a 66×39 solar panel. But what is the wattage?

That is unfortunately not listed at all. Still, most 60-cell solar panels have a size of 39" X 66" and most 72-cell solar panels have sizes of around 39" X 77".



## What is the general size of outdoor photovoltaic panels



### What is the length and width of outdoor solar panels?

However, typical residential solar panels usually measure around 65 to 70 inches in length and 39 to 42 inches in width. These measurements are designed to balance efficiency with ...

### Solar Panel Size: 2026 Detailed Guide

It typically contains 60 cells aligned in a 12 x 5 grid. The size is about 5.5 x 3 feet with a thickness of 1.5-2 inches. The energy output varies by manufacturer and model, but it usually ranges ...

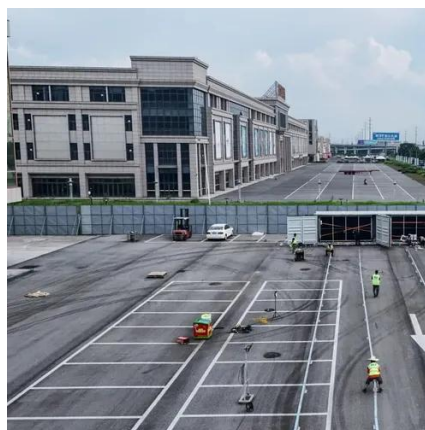


### **Standard Solar Panel Sizes And Wattages (100W-500W Dimensions)**

To bridge that gap of very useful knowledge needed, we have compared and averaged the sizes of 100-watt to 500-watt solar panels available on the market. The goal here is to get to the average solar ...

### What Is Standard Solar Panel Size? A Comprehensive Overview

With dimensions typically ranging from 60 to 72 cells and common sizes around 65 inches by 39 inches, these measurements play a pivotal role in determining how many panels can fit ...



## [Solar Panel Size & Dimensions Guide 2025 \\_ Complete Specs](#)

What is the actual physical size of a standard residential solar panel in 2025? A standard residential solar panel measures 65-66 inches long by 39-40 inches wide by 1.5-2.0 inches thick, ...

### **Understanding Photovoltaic Panel Sizes - What You Need to Know ...**

In this detailed guide, we'll explain how solar panel dimensions correlate with wattage, the different size standards, and how to calculate the best fit for your energy goals.



## [standard solar photovoltaic panel sizes explained](#)

What is the most common residential solar photovoltaic panel size I will encounter? The standard residential solar photovoltaic panel size you'll see most often is based on a 60-cell ...

## [What Are the Common Solar Panel Sizes?](#)



Still, most 60-cell solar panels have a size of 39" X 66" and most 72-cell solar panels have sizes of around 39" X 77". However, panels with cell counts of 96, 120, and 144 may have different ...



### [Solar Panel Size Guide , Best Panel Size for Your Roof](#)

Solar cells are assembled in grids, and the most common configurations are 60-cell panels for residential use and 72-cell panels for commercial or utility use. A 60-cell panel (often seen on ...

## Understanding Solar Panel Dimensions In 2025: A Complete Size Guide

Q1: What are the standard dimensions of a solar panel in 2025? A1: For homes, it's about 1.7m x 1.0m. For commercial projects, around 2.0m x 1.0m. Portable panels vary widely. Q2: Do ...





## Contact Us

---

For catalog requests, pricing, or partnerships, please visit:

<https://id2market.eu>

Phone: +34 910 56 87 45

Email: [info@id2market.eu](mailto:info@id2market.eu)

Scan the QR code to access our WhatsApp.

