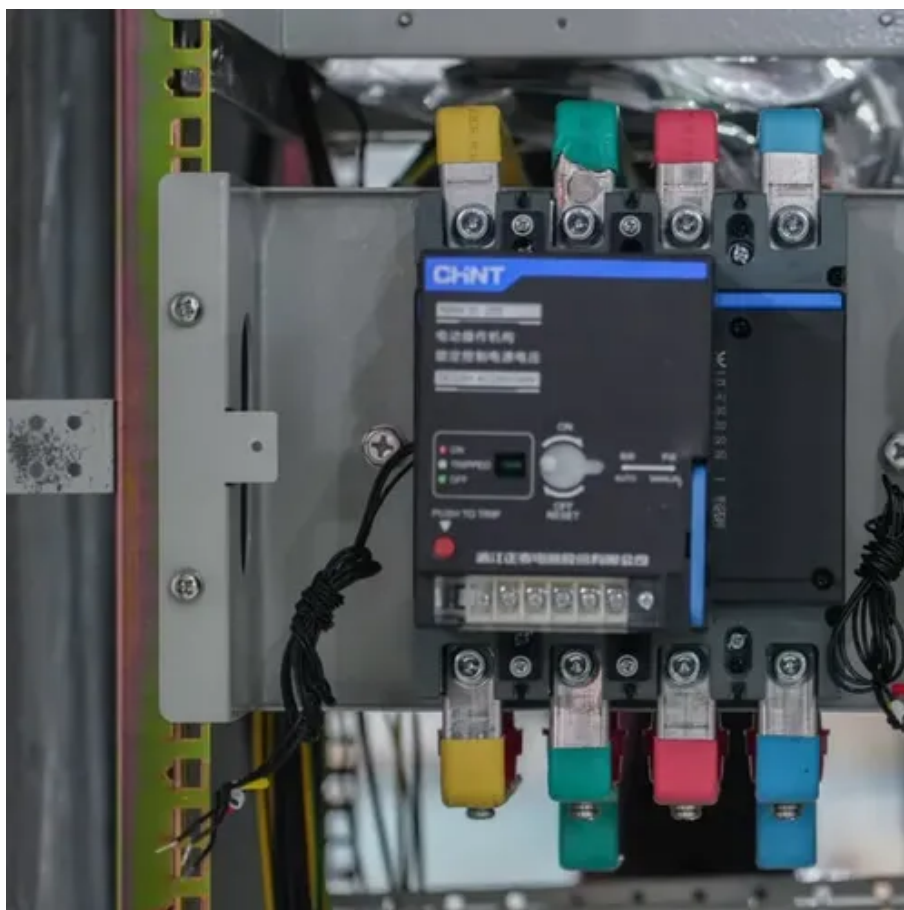




What is the length and width of a 550 photovoltaic panel





Overview

When considering solar energy, one question often arises: what are the standard dimensions of a 550 watt solar panel?

Typically, these panels measure around 1. This size allows for efficient energy capture while remaining manageable for installation. That's basically a 66×39 solar panel. But what is the wattage?

That is unfortunately not listed at all. 7 to 2 meters in length and about 1 meter in width. However, dimensions can vary. Standard Residential Panels Optimize Space and Handling: The industry-standard 60-cell panel dimensions (65" × 39" × 1. This article explores technical specifications, industry applications, and real-world examples to help professionals make in Summary:.



What is the length and width of a 550 photovoltaic panel



Standard Solar Panel Sizes And Wattages (100W-500W Dimensions)

Alright, let's have a look at the length and width of typical solar panels, with wattage (very important), and complete with area or square footage (useful when calculating how many solar panels you can fit ...

[What Are the Typical Dimensions of a 550 Watt Solar Panel?](#)

When considering solar energy, one question often arises: what are the standard dimensions of a 550 watt solar panel? Typically, these panels measure around 1.7 meters by 1 meter. This size allows for ...



[We Analyzed 100 Solar Panels: Dimensions, Efficiency, & Load](#)

While various factors influence solar panel dimensions, our analysis gives you a helpful overview of typical sizes. It helps you understand how the length, width, and depth ranges relate to wattage, ...

[Solar Panel Size & Dimensions Guide 2025 , Complete Specs](#)

In this comprehensive guide, you'll learn everything you need to know about solar panel sizing, from standard dimensions to weight considerations, helping you determine the perfect solar ...



[How long and wide is a 550W solar photovoltaic panel?](#)

The dimensions of a 550W solar photovoltaic panel can vary based on the manufacturer and specific product design, but generally, these panels measure approximately 1.7 to 2 meters in ...



Understanding the Physical Dimensions of a 550 Watt Solar Panel

These high-efficiency units typically measure between 2.2-2.4 meters in length and 1.1-1.3 meters in width, with most models maintaining a slim profile of 35-40mm thickness.



[550 photovoltaic panel length and width](#)

60-Cell Solar Panels. The typical size of a solar panel, such as the 60-cell variant, is designed in a 6x 10 configuration and has dimensions of approximately 3.25 feet by 5.5 feet.

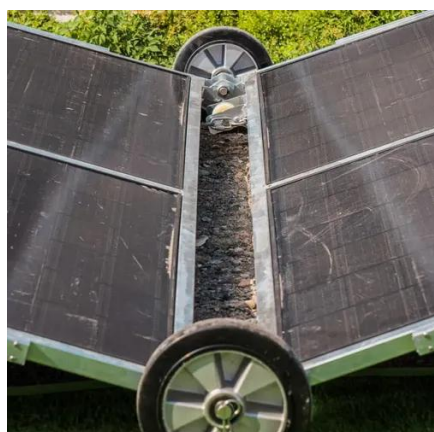


Photovoltaic 550 Panel Size and



Weight: Key Specifications for Solar

Summary: Understanding the size and weight of photovoltaic 550W panels is critical for solar system design, installation efficiency, and cost optimization. This article explores technical specifications, ...



550W Solar Panel Dimensions: Optimizing Renewable Energy Systems

But here's the kicker - their physical dimensions directly impact everything from installation costs to energy output. Let's cut through the noise: a standard 550W panel typically measures around 2279 x ...

Solar Panel Dimensions: Specifications, Power Classes, Roof Area

Analysis of solar panel dimensions and power classes, with reference sizes for 430W/550W/600W modules and corresponding roof area calculations to help select the most ...





Contact Us

For catalog requests, pricing, or partnerships, please visit:

<https://id2market.eu>

Phone: +34 910 56 87 45

Email: info@id2market.eu

Scan the QR code to access our WhatsApp.

