



What is the length of the wind turbine blades





Overview

But how long are the blades on a wind turbine in actual numbers?

Modern onshore wind turbines typically have blades ranging between 40 and 70 meters in length. Offshore turbines, often built at a grander scale, can exceed 80 meters per blade. By doubling the blade length, the power capacity (amount of power it actually produces versus its potential) increases four-fold without having to add more height to the tower [1]. Some. Wind energy has undergone a massive transformation, represented by the colossal blades propelling turbines into the future of renewable power. Unicomposite, an ISO-certified pultrusion specialist, supplies the spar caps and stiffeners that let those mega-structures stay light, stiff, and reliable — giving.



What is the length of the wind turbine blades

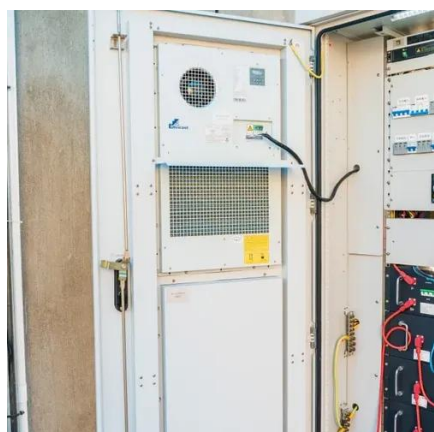


Wind Turbine Blade Size: How Big Are They and Why?

According to The United States Department of Energy, most modern land-based wind turbines have blades of over 170 feet (52 meters). This means that their total rotor diameter is longer ...

How Long Are Wind Turbine Blades? Sizes, Materials & Trends

What is the practical maximum length for onshore wind turbine blades today? Most OEMs cap onshore blades around 85 m because of transport limits, though segmented solutions can ...

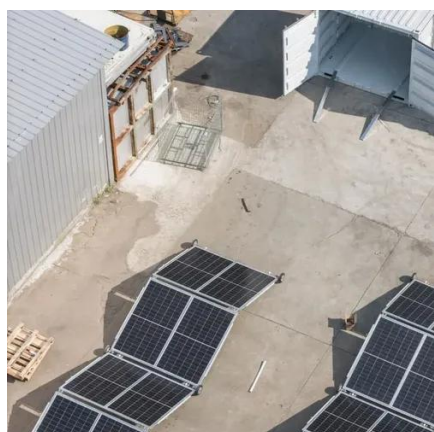


What Length Are Wind Turbine Blades

Wind turbine blades have evolved significantly over the past 40 years, from being 26 feet long and made of fiberglass and resin to now being 351 feet long. These blades play a crucial role in ...

How Long Are the Blades on a Wind Turbine: Mind-Blowing Facts

Modern onshore wind turbines typically have blades ranging between 40 and 70 meters in length. Offshore turbines, often built at a grander scale, can exceed 80 meters per blade. To put that in ...



How Long are Wind Turbine Blades: The Quick Guide to Their ...

Wind energy has undergone a massive transformation, represented by the colossal blades propelling turbines into the future of renewable power. From modest beginnings with blades a ...

[How Long Are Wind Turbine Blades: Size Specifications Guide](#)

A: Typical wind turbine blades range from 40 to 80 meters (131 to 262 feet) in length. Larger offshore models can exceed 90 meters (295 feet), designed to capture more wind and ...



[What Is the Average Length of a Wind Turbine Blade?](#)

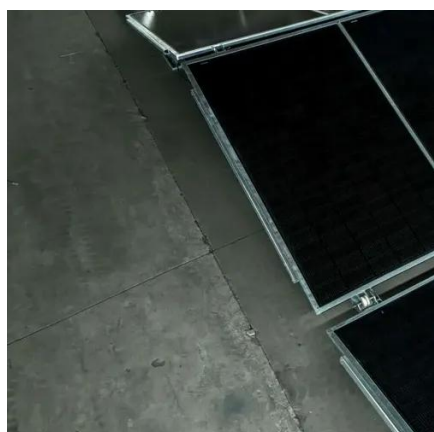
Wind turbine blades now average over 170 meters, capturing more wind for efficiency. Advancements in technology drive these longer blades to boost energy production.

[How Long Are Wind Turbine Blades?](#)



Factors & Size Explained

The length of wind turbine blades varies considerably, depending on whether they are intended for onshore or offshore installations and their power capacity. Modern onshore wind ...



How Long are Wind Turbine Blades?

Today, blades can be 351 feet, longer than the height of the Statue of Liberty, and produce 15,000 kW of power. Modern blades are made from carbon-fiber and can withstand more stress due ...

How Long Are Wind Turbine Blades? Explore Impressive Dimensions

Did you know that the longest wind turbine blades now measure an astonishing 115.5 meters, nearly as tall as the Statue of Liberty? This impressive dimension is not just a feat of ...





Contact Us

For catalog requests, pricing, or partnerships, please visit:

<https://id2market.eu>

Phone: +34 910 56 87 45

Email: info@id2market.eu

Scan the QR code to access our WhatsApp.

