



What is the power of a 4kW square wave inverter





What is the power of a 4kW square wave inverter

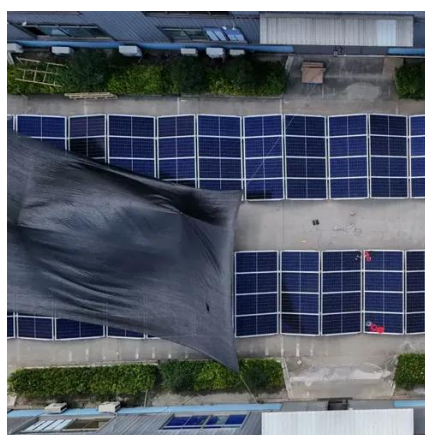


4000 Watt DC Solar Inverters

These inverters can handle a range of power sources from 4,000 watts to 4,999 watts. Compare these 4kW solar inverters from Fronius, SMA, Schneider Electric, Xantrex, PV Powered, Power One, Advanced Energy, ...

Square Wave Inverter , How it works, Application & Advantages

The power rating of a square wave inverter refers to the maximum amount of power it can supply to its load. It's essential to select an inverter with a power rating that matches the needs of the ...



Square Wave Inverter - Definition, Circuit Diagram & Waveform

In this topic, you study Square Wave Inverter - Definition, Circuit Diagram & Waveform. Square Wave Inverter is an electrical circuit, converts a fixed voltage DC to a fixed (or variable) ...

What is a Square Wave Inverter?

It is a type of modified sine wave inverter that uses a multivibrator to generate square wave pulses at a fixed frequency in the output. This helps to convert the DC voltage or signal from ...



GRADE A BATTERY

LiFePO4 battery will not burn when overcharged/over discharged, overcurrent or short circuit and can withstand high temperatures without decomposition.



Resistant to -20°C-55°C high and low temperature.



4kW Off Grid Inverter, 48V , Power Home

Off grid solar inverter output is pure sine wave, output efficiency is up to 99%, reliable and stable. Suitable for all kinds of off-grid solar systems, providing you with reliable power solutions.

6.4. Inverters: principle of operation and parameters

This is the simplest case, and if the inverter performs only this step, it is a square-wave inverter. This type of output is not very efficient and can be even detrimental to some loads.



The Only Inverter Size Chart You'll Ever Need

We have created a comprehensive inverter size chart to help you select the correct inverter to power your appliances.

Inverter Types & Working Principle ,



Sine Wave, Square Wave, ...

The article provides an overview of inverter technology, explaining how inverters convert DC to AC power and detailing the different types of inverters--sine wave, square wave, and modified sine ...

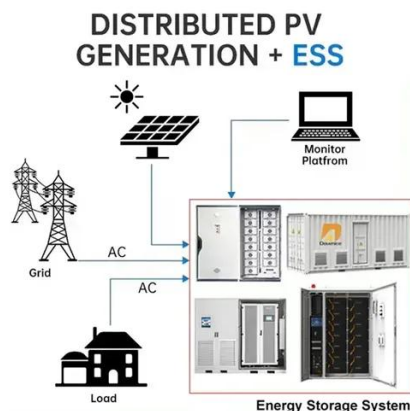


Chapter 3

This document summarizes different types of inverters used to convert DC to AC power. It describes single-phase half-bridge and full-bridge inverters that produce square wave output voltages.

[Square wave inverter: what you need to know](#)

For example, if you want to power a TV that consumes 70 W, you would need a square wave inverter of around 150 W. Next, we will present the most common applications of this equipment.





Contact Us

For catalog requests, pricing, or partnerships, please visit:

<https://id2market.eu>

Phone: +34 910 56 87 45

Email: info@id2market.eu

Scan the QR code to access our WhatsApp.

