



# What is the reason for outdoor base station gateway





## Overview

---

Outdoor gateways, on the other hand, are designed for outdoor use and area coverage. They are more robust, weatherproof and offer a greater range than indoor gateways. Now, every unit ships with an industry-leading 5-year manufacturer's warranty, providing unmatched peace of mind and long-term. Necessary cookies help make a website usable by enabling basic functions like page navigation and access to secure areas of the website. Name Provider Purpose Expiry Type CookieConsent Cookiebot Stores the user's cookie consent state for. Generally speaking, a LoRaWAN gateway is used to establish wireless communication between LoRaWAN end devices, also known as nodes, and a LoRaWAN network server (LNS). It is, so to speak, the connecting component between the two and therefore an important sub-component of a LoRaWAN wireless network. At the heart of LoRa networks lie two critical components: LoRa gateways and LoRa base stations. Gateways are typically mounted on a roof top of a nearby building with a cenna are installed in different locations. In such cases, you must use the Antenna Relocation.



## What is the reason for outdoor base station gateway

---

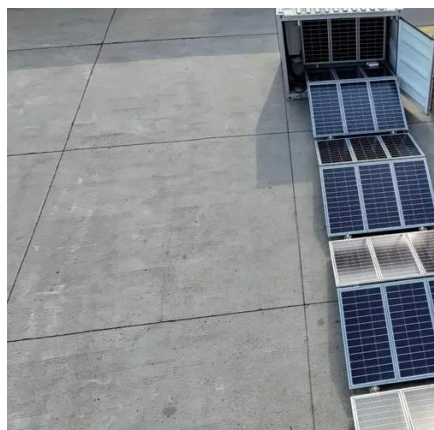


### Base Stations

Macro-base stations are tall towers ranging from 50 to 200 feet in height, placed at strategic locations to provide maximum coverage in a given area. Those are equipped with large ...

### [LoRaWAN Gateway: Everything you need to know](#)

Outdoor gateways, on the other hand, are designed for outdoor use and area coverage. They are more robust, weatherproof and offer a greater range than indoor gateways. Outdoor ...



### Demystifying LoRa: Gateways vs. Base Stations for IoT Networks

The range and capacity of a LoRa gateway and base station can vary depending on several factors, including the operating frequency, antenna configuration, and environmental conditions.

### Embrace the outdoor

In conclusion, choosing outdoor base stations in PMR/LMR networks provides strong reasons to do so, including cost savings, seamless operation, georedundancy, enhanced protection, streamlined ...



### [Gateway and Base Station Installation Guide](#)

If deploying a Gateway in a location where the entire enclosure cannot be suitably mounted for a clear line of sight over the deployment area, an Antenna Relocation Kit will be needed to mount the ...



### **Microsoft Word**

Outdoor enclosures provide LMR network operators with a cost-effective and quick-install alternative to buildings and shelters. Outdoor enclosures have a lower acquisition cost, and do not require building ...



### [MultiTech Conduit® IP67 Base Station](#)

Bundled for easy deployment, the solution includes a Conduit with a LoRa mCard™, IP67 enclosure and LoRa antenna to improve outdoor range. It also provides a choice of cellular 3G, 4G-LTE or ...



### [MultiTech Conduit® IP67 Base Station .](#)



## HY-LINE

The MultiTech Conduit® IP67 base station is a rugged IoT gateway solution designed specifically for outdoor public or private LoRa® networks.



## Conduit® IP67 200 Series Cellular Gateways

MultiTech Conduit® IP67 200 Series Base Station is a ruggedized IoT gateway solution, specifically designed for outdoor LoRa® public or private network deployments.



## Conduit® IP67 Base Station Cellular Industrial Gateways

Bundled for easy deployment, the solution includes a Conduit with a LoRa mCard(TM), IP67 enclosure and LoRa antenna to improve outdoor range. It also provides a choice of cellular 4G-LTE or Ethernet ...





## Contact Us

---

For catalog requests, pricing, or partnerships, please visit:

<https://id2market.eu>

Phone: +34 910 56 87 45

Email: [info@id2market.eu](mailto:info@id2market.eu)

Scan the QR code to access our WhatsApp.

