



What is the size of the solar 710 panel





Overview

The 132-cell panel measures 2384 × 1303 × 33 mm, weighs 37.8 kg, features an IP68 junction box and MC4-EVO2 / T6 compatible connectors (cable 4.0 mm², ~410/250 mm), is rated for 5,400 Pa snow / 2,400 Pa wind loads, and is covered by an enhanced product warranty plus a. There are 3 standardized sizes of solar panels, namely: 60-cell solar panels size. That's basically a 66×39 solar panel. But what is the wattage?

That is unfortunately not listed at all. 72-cell solar panel. Container not included — price is for palletized solar panels only. Installed these panels across our hotels. Engineered with cutting-edge N-Type TOPCon cell technology and a bifacial design that captures sunlight on both sides, this high-performance module delivers up to 850W of real output in optimal. Standard Residential Panels Optimize Space and Handling: The industry-standard 60-cell panel dimensions (65" × 39" × 1.5") aren't arbitrary - they represent the optimal balance between power output, installation ease, and roof space utilization. Leascend Photovoltaic Technology Co. Detailed profile including pictures, certification details and manufacturer PDF . For the same area, the SP715M-66H module can be used to obtain larger installed capacity, which is especially suitable for industrial and commercial rooftops, residential and other distributed projects with limited land area. 0 technology, BiMAX6N module combines the gettinging.



What is the size of the solar 710 panel



CS7N-710TB-AG

CS7N-710TB-AG - Solar Panels from Canadian Solar. Get product specifications, Download the Datasheet, Request a Quote and get pricing for CS7N-710TB-AG on everything PE.

Leascend PV , Uranus G12-SMBB 710-730W , Solar Panel Datasheet ...

Leascend Photovoltaic Technology Co., Ltd Solar Panel Series Uranus G12-SMBB 710-730W. Detailed profile including pictures, certification details and manufacturer PDF.

Nominal Capacity
280Ah
Nominal Energy
50kW/100kWh
IP Grade
IP54

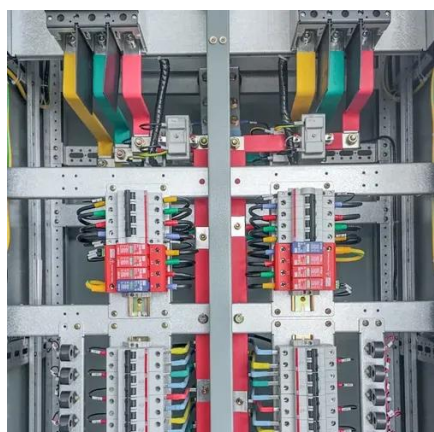


[Canadian Solar 710W N Type Bifacial Topcon](#)

The 132-cell panel measures 2384 × 1303 × 33 mm, weighs 37.8 kg, features an IP68 junction box and MC4-EVO2 / T6 compatible connectors (cable 4.0 mm², ~410/250 mm), is rated for 5,400 Pa snow / 2,400 Pa ...

[China 710 Watt Solar Panel Manufacturers Suppliers Factory](#)

We're well-known as one of the leading 710 watt solar panel manufacturers and suppliers in China. Please feel free to buy or wholesale high quality 710 watt solar panel in stock here from our factory.



[Solar Panel Size & Dimensions Guide 2025 _ Complete Specs](#)

In this comprehensive guide, you'll learn everything you need to know about solar panel sizing, from standard dimensions to weight considerations, helping you determine the perfect solar solution for your ...

Standard Solar Panel Sizes And Wattages (100W-500W Dimensions)

The goal here is to get to the average solar panel size by wattage. You can find typical dimensions of 100W, 150W, 170W, 200W, 200W, 220W, 300W, 350W, 400W, and 500W solar panels summarized in the chart ...



710 watt solar panel for sale , Buy online for home, boat and RV

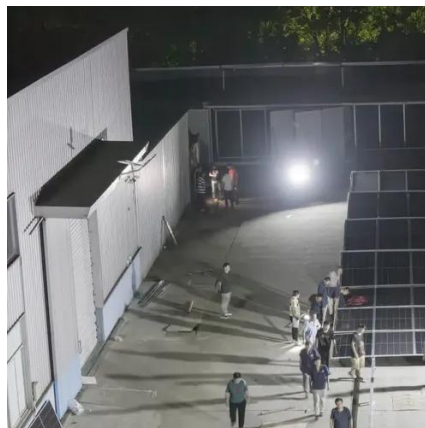
Size: About 2.1 meters (6.89 feet) wide by 1.1 meters (3.61 feet) tall. Weight: Around 30-40 kg (66-88 lbs), making them manageable for installation. Efficiency: Converts sunlight into electricity at rates ...

Canadian Solar 710W Solar Panel 132



Cells Bifacial CS7N-TB-AG-US-710

The solar cells of CS7N-TB-AG-US-710 are half the size of those found in standard panels. Major advantages include reduced power consumption, extended life and enhanced efficiency in low-light conditions.



[Canadian Solar 710W N-Type TOPCon Bifacial Panel \(CS7N-710\)](#)

Engineered with cutting-edge N-Type TOPCon cell technology and a bifacial design that captures sunlight on both sides, this high-performance module delivers up to 850W of real output in optimal conditions.

[High Power HJT Double Glass 700W 710W 715W Solar Panels](#)

What are the exact dimensions and weight of the 715W solar panel? The SP715M-66H module has dimensions of 2384 × 1303 × 35mm (93.86 × 51.30 × 1.38 inches) and weighs 38.7kg (85.3 lbs).





Contact Us

For catalog requests, pricing, or partnerships, please visit:

<https://id2market.eu>

Phone: +34 910 56 87 45

Email: info@id2market.eu

Scan the QR code to access our WhatsApp.

