



# What is the speed of the wind turbine generator





## Overview

---

Utility-scale wind turbines need a minimum “cut-in” wind speed of 7-10 mph to generate electricity. When the wind passes through the turbine, it causes the rotor (a large wheel to which the blades are attached) to spin faster. Engineers must tweak the aerodynamics and gear ratios of the blade to ensure they have the optimal tip speed ratio, or the ratio between the turbine's rotational speed and the wind velocity.



## What is the speed of the wind turbine generator



### How Fast Do Wind Turbines Turn and Why?

Utility-scale turbines, often seen in wind farms, rotate quite slowly, typically operating at a rotational speed between 10 and 20 revolutions per minute (RPM).

### How Fast Does a Wind Turbine Spin? (And Why it Matters)

Most wind turbines have a rotor that spins at around 20 to 30 revolutions per minute (rpm) when the wind is blowing at its rated speed. But the average speed of the rotor can be much ...



12.8V6Ah





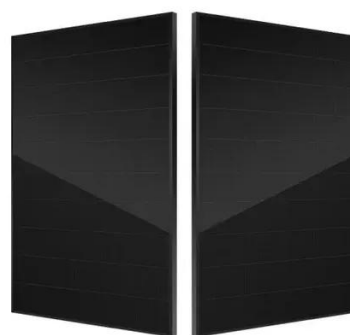
- Nominal voltage (V):12.8
- Nominal capacity (Ah):6
- Rated energy (WH):76.8
- Maximum charging voltage (V):14.6
- Maximum charging current (A):6
- Floating charge voltage (V):13.6-13.8
- Maximum continuous discharge current (A):10
- Maximum peak discharge current @10 seconds (A):20
- Maximum load power (W):100
- Discharge cut-off voltage (V):10.8
- Charging temperature (°C):-50
- Discharge temperature (°C):-20-+60
- Working humidity: <95% R.H (non condensing)
- Number of cycles (25 °C, 0.5C, 100%DoD): >2000
- Cell combination mode: 32700-4(1p)
- Terminal specification: T2 (6.3mm)
- Protection grade: IP65
- Overall dimension (mm):50\*107\*107mm
- Reference weight (kg):0.7
- Certification: un38.3/msds

### How fast do wind turbines spin ,Free

Utility-scale wind turbines need a minimum "cut-in" wind speed of 7-10 mph to generate electricity. The rotation rate speeds up as wind speeds climb until the turbine reaches its rated ...

## Wind Energy Factsheet

Approximately 2% of solar energy striking Earth's surface is converted into kinetic energy in wind. 1 Wind turbines convert this kinetic energy to electricity without emissions, 1 and can be built onshore ...



### [How fast do the tips of wind turbines spin?](#)

The speed of wind turbine blades is a fascinating interplay of physics, engineering, and environmental factors. The tips of these blades are the fastest-moving part, and their speed is a ...



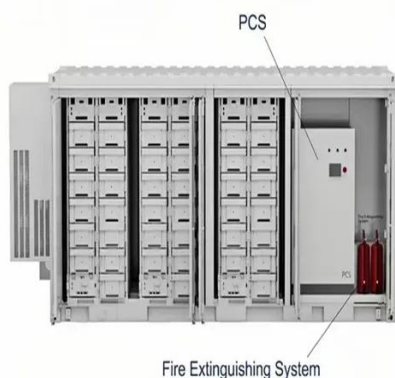
### **How Fast Do Wind Turbines Spin?**

The speed of a wind turbine's rotation can be measured either in absolute velocity or in revolutions per minute (RPM). Wind turbines generally make between 10 and 20 revolutions per ...



### [How Fast Do Wind Turbines Spin? \(20 RPM, on average\)](#)

Wind turbines' RPM (Rotations Per Minute) speed is the number of complete rotations the blade makes in one minute. The average wind turbine spins at a rate of 15-25 RPM.



### [How Fast do Wind Turbines Spin? \(Faster](#)



## Than You Think)

Regular turbines comfortably achieve speeds of 100mph, larger styles with heavier blades, reach speeds of 180mph. The speed at which the blades of a wind turbine spin is in direct relation to ...



## Wind Turbine Speed

The more important, cut-in speed, is the wind speed at which the turbine generator will begin to produce electricity. This is a crucial piece of information to understand about wind turbine generators.

## Optimal wind speeds for turbine efficiency , Business Norway

Wind speed largely determines the amount of electricity generated by a turbine. Higher wind speeds generate more power because stronger winds allow the blades to rotate faster. Faster ...





## Contact Us

---

For catalog requests, pricing, or partnerships, please visit:

<https://id2market.eu>

Phone: +34 910 56 87 45

Email: [info@id2market.eu](mailto:info@id2market.eu)

Scan the QR code to access our WhatsApp.

