



What is the unit of photovoltaic bracket wp





Overview

Watt peak (sometimes Kilowatt peak is used for PV plants) stands for peak power. This value specifies the output power achieved by a Solar module under full solar radiation (under set Standard Test Conditions). Solar radiation of 1,000 watts per square meter is used to define. Most countries refer to the nominal installed capacity of photovoltaic systems and panels by counting DC power in peak watts, denoted as WP or sometimes WDC, as most manufacturers do. And organizations of the photovoltaic industry, such as SEIA, SPE or IEA; What does kWp stand for in a photovoltaic. WP (Watt-Peak) refers to the maximum power output a solar panel for home can produce under ideal sunlight conditions.



What is the unit of photovoltaic bracket wp



[The difference between photovoltaic panel units wp and w](#)

What does WP stand for in a photovoltaic system? Most countries refer to the nominal installed capacity of photovoltaic systems and panels by counting DC power in peak watts, denoted as WP or sometimes ...

[What are the main photovoltaic units of measurement?](#)

The main units of measurement in photovoltaics are the watt-crete (Wp) and the kilowatt-hour (kWh). Watt-peak (W p): the maximum electrical power that can be produced by a photovoltaic device under standard sunlight ...



[What is the meaning of WP in solar energy? , NenPower](#)

The abbreviation WP in solar energy signifies Watt-peak, which denotes the peak power output an energy source, such as a solar panel, can deliver under optimal conditions.



What Is Wp In Solar Panel?

Watt-Peak (Wp) is a measure of the maximum power output a solar panel can produce under standard test conditions (STC). These conditions include a solar irradiance of 1000 watts per ...



What is Wp in solar power?

The watt-peak (Wp) is therefore an indication based on a standard. It corresponds to the maximum electrical power that can be supplied by a photovoltaic panel under standard temperature and sunlight conditions. 1 ...

Rated power & Watt Peak (Wp) , CUBE CONCEPTS

The manufacturer's specification "Watt peak (Wp) is not a standardized designation for the output of solar modules. However, it is used with the Rated power of a module and is usually ...



12.8V 200Ah



Watt Peak (Wp) - Definition, Glossary, Details - Solar Mango

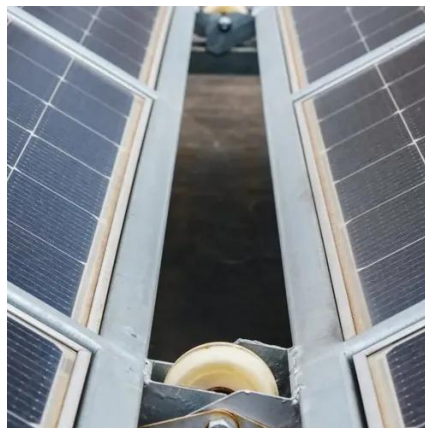
Watt peak (sometimes Kilowatt peak is used for PV plants) stands for peak power. This value specifies the output power achieved by a Solar module under full solar radiation (under set Standard Test Conditions).

What is WP in Solar Panels?



Understanding Watt-Peak (Wp)

WP (Watt-Peak) refers to the maximum power output a solar panel for home can produce under ideal sunlight conditions. It is a standardized measure that allows consumers to compare the ...



What is WP in Solar Panels: Myths, Facts, and FAQs

WP, or watt-peak, is a crucial measurement in the solar panel industry that indicates the maximum power output of a solar panel under standard test conditions (STC).

What is Watt-Peak (Wp)?

What is Watt-Peak (Wp)? The unit of maximum electrical output of a PV system measured under standard test conditions. The other measures commonly used are kWp and MWp, kilowatt-peak being more common for ...





Contact Us

For catalog requests, pricing, or partnerships, please visit:

<https://id2market.eu>

Phone: +34 910 56 87 45

Email: info@id2market.eu

Scan the QR code to access our WhatsApp.

