



What is the work of power generation in communication base stations





Overview

The base station power system serves as a continuous "blood supply pump station," responsible for AC/DC conversion, filtering, voltage stabilization, and backup power. Its purpose is to ensure the uninterrupted operation of base station equipment. The present-day tele-space is incomplete without the base stations as these constitute an important part of the modern-day scheme of wireless communications. These types of objects are an inevitability since they serve the purpose of. In order to better serve the coming 5G era, in addition to the large number of base stations and wide coverage, the base stations must have good stability and must ensure uninterrupted power supply 24 hours a day. Whether making a phone call, watching a video, or using mobile data, every interaction depends on base stations to transmit and receive wireless signals efficiently. Simply put, a base station (BS) is a wireless transceiver device in a mobile communication network that provides wireless coverage and communicates with mobile terminals like your phone. Outdoor base stations integrate all essential systems into a single Integrated Cabinet, designed to endure harsh conditions like direct sunlight, rain, and extreme temperatures. These units protect the equipment while ensuring efficient functionality. The phrase "communication batteries" is often applied broadly, sometimes.



What is the work of power generation in communication base stations



[What Is a Telecom Base Station and How Does It Work?](#)

As communication networks expand to support applications like smart cities, IoT, autonomous driving, and telemedicine, the performance and reliability of base stations--and their power infrastructure--will become ...

The Importance of Renewable Energy for Telecommunications Base Stations

Installations of telecommunications base stations necessary to address the surging demand for new services are traditionally powered by conventional energy sources, which results in massive



Base Stations

Base stations form a key part of modern wireless communication networks because they offer some crucial advantages, such as wide coverage, continuous communications and an array of services.

Complete Guide to 5G Base Station Construction , Key Steps, Equipment

Explore how 5G base stations are built--from site planning and cabinet installation to power systems and cooling solutions. Learn the essential components, technologies, and challenges behind



5G ...



Communication base station-solar power supply solution system

For the power supply of communication base stations in the area, the communication base stations use solar power generation systems, which do not require energy distribution, are not restricted by the project ...



What are Base Station in Telecommunications?

Base stations contain several key parts. The antenna sends and receives radio energy. The transceiver handles signal modulation. The baseband processor converts signals to digital form. A duplexer ...



The Importance of Renewable Energy for ...

Installations of telecommunications base stations necessary to address the surging demand for new services are traditionally powered ...

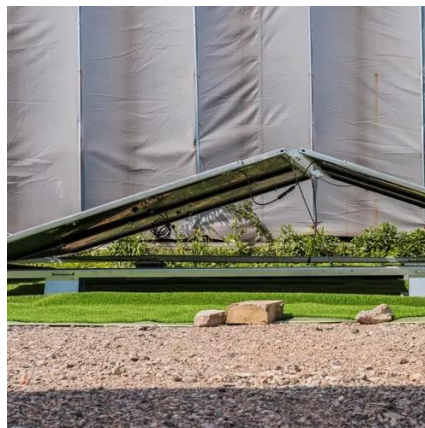
Communication Batteries: Why



Telecom Base Stations Have Unique

...

The phrase "communication batteries" is often applied broadly, sometimes including handheld radios, emergency devices, or general-purpose backup batteries. In practice, when network operators and ...



What is a Base Station? -- From Communication Core to Thermal ...

How Does a Base Station Work? A base station's operation can be summarized in three steps: wireless transmission, signal conversion, and network connection. First, the base station uses its tall ...

[What Is a Base Station? Definition and How It Works](#)

Beyond signal transmission, base stations perform complex tasks to manage network traffic and ensure continuous, reliable service. A primary function involves resource allocation, where the base station ...



Power Base Station

As mentioned in the discussion of base-station classes above, there is, however, a maximum power limit of 24 dBm output power for Local Area base stations and of 20 dBm for Home base stations, counting the power ...



Contact Us

For catalog requests, pricing, or partnerships, please visit:

<https://id2market.eu>

Phone: +34 910 56 87 45

Email: info@id2market.eu

Scan the QR code to access our WhatsApp.

