



What kind of generator is used for wind power





Overview

Three types of generators are commonly used in wind turbines: Synchronous, Induction, and Direct Drive. Wind turbines play a crucial role in harnessing the power of wind, converting it into electrical energy. This knowledge not only enhances your appreciation of renewable energy but also empowers you to make informed choices about sustainable practices. Choosing the right type can significantly impact efficiency, reliability, and maintenance costs. □□ What is a wind turbine generator, □□ How does a wind turbine generator system work, □□ What are the different types of wind turbines, □□ What are the main components of a wind turbine□□ What is a wind farm, □□ How windmills are built and □□ How does a wind turbine work Today, let's get answers.



What kind of generator is used for wind power

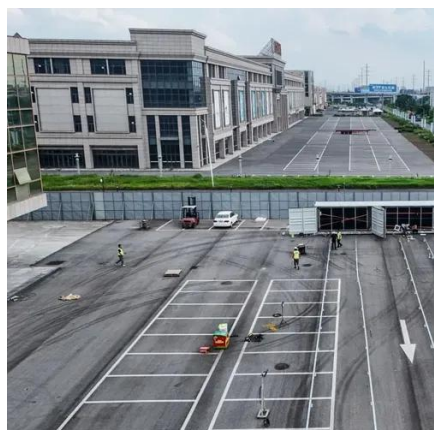


What Type Of Generator Is Used In A Wind Turbine

Three types of generators are commonly used in wind turbines: Synchronous, Induction, and Direct Drive. The most common types of generators used in wind turbines include synchronous ...

Wind Electric Generator

Regarding wind energy conversion technology to extract power from the wind, three different types of wind turbines such as PMSGs, wound field synchronous generators (WFSGs), and doubly fed ...



Which Generator is Used in Wind Turbine: Expert Insights

Wind turbines use different types of generators to convert wind energy into electricity. The most common are synchronous and asynchronous generators. Each type has its own advantages, impacting ...

Wind Turbine Generator Types: Which One Is Best for Your Project

In this article, we will explore the major wind turbine generator types, including DFIG wind turbines, permanent magnet synchronous generators (PMSG), and others.

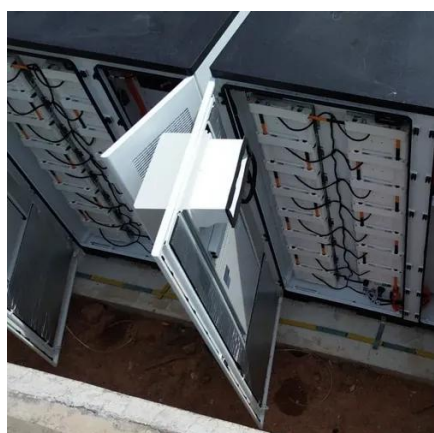


A Guide to Understanding the Most Common Types of Wind Turbine Generators

There are many different types of generators used today in wind turbines, but the most common types are asynchronous generators. The two types most commonly used are the squirrel ...

[Wind Turbine Generators: Working, Types, Parts](#)

Simply put, a wind turbine generator is a device that converts the energy of the wind into electricity. It consists of large blades that spin when the wind blows, turning a rotor connected to a generator. The ...



How Do Wind Turbines Work?

Wind turbines work on a simple principle: instead of using electricity to make wind--like a fan--wind turbines use wind to make electricity. Wind turns the propeller-like blades of a turbine around a rotor, ...

Electricity generation from wind



Wind turbines use blades to collect the wind's kinetic energy. Wind flows over the blades creating lift (similar to the effect on airplane wings), which causes the blades to turn.



[Wind Turbine Generator Types - 101 Generator](#)

Wind energy plays a crucial role in the renewable energy landscape, with wind turbines converting kinetic wind power into electrical energy. Different types of wind turbine generators exist ...



Contact Us

For catalog requests, pricing, or partnerships, please visit:

<https://id2market.eu>

Phone: +34 910 56 87 45

Email: info@id2market.eu

Scan the QR code to access our WhatsApp.

