



# What's inside the photovoltaic panel junction box





## Overview

---

A junction box is a sealed enclosure that houses the electrical connections for solar panels. It is typically located on the back of a solar panel and contains a variety of components, including diodes, fuses, and connectors. They also provide important safety measures to protect your home or business against safety hazards like electric shocks.



## What s inside the photovoltaic panel junction box



### [Solar Junction Box Functions Explained in Detail](#)

When we think of a solar panel, we usually think of its glass surface, solar cells, or aluminium frame. But hidden behind the scenes of every solar panel is a small but crucial component ...

### [An Overview of the Solar Panel Junction Box](#)

Here's a brief overview of the solar panel junction box to learn its purpose, how it functions, and the necessary safety precautions. The solar panel junction box is on the backside of a ...



### [Explain solar junction box and its functions in detail](#)

Solar junction boxes act as connectors to bridge solar modules to control devices such as inverters. Inside solar junction box, the current generated by the solar modules is drawn out and ...

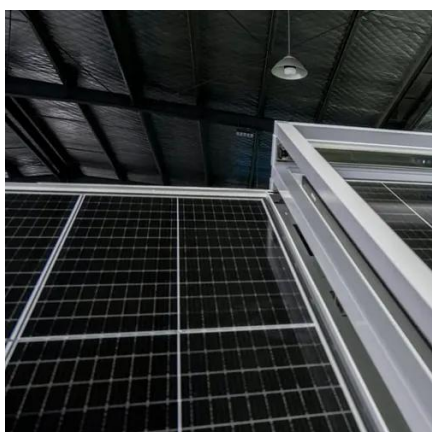
### [Solar Panel Junction Box: Everything You Need to Know](#)

The major components of solar panel junction boxes include enclosure, diodes, terminal blocks, and surge protection devices. These components all have their part to play in the junction ...



## [Solar Junction Box -- What It Does and Why It Matters](#)

In module-level applications, the junction box is mounted on the back of every solar panel and contains the diodes and wiring that carry current out of the module.



## **Junction Box for Solar Panel: Definition, How it Works, and Importance**

Typically, a junction box performs several key functions in a solar panel, such as serving as a connection point, providing protection, housing diodes, and ensuring the safety of your ...



## [PV Junction Box: purpose and connection](#)

A PV junction box is attached to the back of the solar panel (TPT) with silicon adhesive. It wires the (usually) 4 connectors together and is the output interface of the solar panel.



## **Solar Panel Junction Box Guide**



Junction boxes in solar panel systems serve as critical connection points, housing essential components like diodes, terminals, and connectors. These enclosures protect internal ...



### PV Junction Box: purpose and connection

The major components of solar panel junction boxes include enclosure, diodes, terminal blocks, and surge protection devices. These ...



### **Solar Panel Junction Box**

A solar panel junction box is an essential component of a solar energy system that is responsible for connecting multiple solar panels together. It is a weatherproof enclosure that houses ...



### **What Is a Junction Box in A Solar Panel , Its Function and Complete**

The junction box protects the solar panel from damage in the event of shading, partial damage, or electrical overload. The junction box contains bypass diodes, which allow current to flow ...





## Contact Us

---

For catalog requests, pricing, or partnerships, please visit:

<https://id2market.eu>

Phone: +34 910 56 87 45

Email: [info@id2market.eu](mailto:info@id2market.eu)

Scan the QR code to access our WhatsApp.

